

Stansted Mountfitchet

The Link



Volume XXX

Don't Move - Improve!

If you are trying to sell your house at the moment and can't, RETHINK, stay where you are, and improve on what you have.

What about a Conservatory..... Or New Windows?

- Available in a wide range of colours and styles
- Tailor-made to your requirements
- Full independently backed 10 year guarantee



Here's what some of our customers say about us:

'The practical knowledge and craftsmanship they demonstrated exceeded our high expectations' **Mr S, Elsenham**

'I was particularly impressed with how your team worked, causing minimal disruption to our busy family life, cleaning up as they went' **Mr G, Stansted**

Call us NOW for FREE Underfloor Heating in your new Conservatory (RRP £600.00).



01279 813888

The Cock Inn at Henham

Traditional English Pub in a Delightful Rural Setting

A Family Friendly Atmosphere Serving

Traditional Home Cooked Dishes
Locally Sourced Ingredients
Menu Changed Daily

Lunch 12-2:30 PM Dinner 6:00 PM till late
Booking advisable

Tel: 01279 850347

Or see our Web-Site www.cockinnhenham.co.uk

Bada Bing!

Ristorante Italiano



Lunch and Dinner
Sunday Lunch
Bookings recommended

Peter and Angie Ruggiero
present to you the
true taste of Italy in Stansted

Authentic Italian Cuisine
Stone Baked Pizzas
Ruggiero Family Pasta dishes
Speciality Meat, Poultry and Fish dishes
All our food is prepared on the premises

A family restaurant for all to enjoy
Tel: 01279 817177 Fax: 01279 813866
30 Lower Street Stansted CM24 8LP
www.badabingstansted.com
Email: badabingstansted@aol.com

Monday 6 pm - 10.30 pm

Tuesday - Saturday 10 am - 3 pm and 6 pm - midnight

Sunday Breakfast 10 am - 11 am and Lunch noon - 7 pm

NEW! **Professional Event Management - Catering for all Outside Events**
Christmas Party Nights at Bada Bing! Please contact us for details

VOLUME 30
Issue 6
May 2010

Stansted Mountfitchet Village Magazine
The Link
www.stanstedlink.org.uk

Editor:
Derek Honour
01279 647213
editor@stanstedlink.org.uk

Advertising:
Mike and Marion Dyer
01279 814059
adverts@stanstedlink.org.uk
Or check on website for prices

Distribution:
Emily Winter
01279 812216
distribution@stanstedlink.org.uk

Treasurer:
Emily Winter
01279 812216
accounts@stanstedlink.org.uk

Committee:
Yvonne Ayres
Susan Bone
Katharine Hurford
Dick Pollard
Ruth Rawlinson

Printers:
Copyzone
01279 657769

CIRCULATION:
The Link is delivered free to 2700 homes and businesses in Stansted Mountfitchet. Further copies may be purchased for 50p each or £5.00 for the year.

CONTRIBUTIONS:
by email (*preferred*) to:
editor@stanstedlink.org.uk
or by hand to:
5 Greenfields, Stansted
CM24 8AH
please note new address

by **noon** on 11th May
for the June issue
by **noon** on 11th June
for the July issue

Stansted network is compiled by Stansted Mountfitchet Parish Council.

The 'Link' is produced by Stansted Mountfitchet Magazine Community Interest Company and supported by local churches, businesses and the Parish Council. Each edition is also available on line at www.stanstedlink.org.uk.

Editorial



Uttlesford Citizen's Advice Bureau are now offering a new outreach service in Stansted, making it more accessible to local people in need of their help. Whilst wishing them well in their venture it is to be hoped that the service is not kept too busy!!!

Amongst the display of beautiful daffodils a new seat has sprung up, courtesy of Sworders Fine Art Auctioneers, at the end of High Lane, which affords its users an interesting view up towards the Aubrey Buxton Nature Reserve. May promises to be an exceptionally eventful month this year, with a General Election sandwiched between the two Bank Holidays. Why not take time out (during your walk to the Polling Station perhaps?) and sit awhile on one of the many seats around the village, to appreciate the lovely green spaces that we are fortunate to have in and all round Stansted, but often take for granted.

CONTENTS

Thought for the Month	2	Ugley Women's Institute	21
Church News	2-4	Mystery Solved!	21
Good Friday Project	5	Stansted Mountfitchet U3A	23
Village Events	7	Remember This?	23
Stansted Mountfitchet Local		Advice for 'Backyard Farmers'	25
History Society	9	Nature Notes	25
Stansted Fun Run	9	Stansted Cricket Club	25
Huw Johnson Club	9	St Mary's Primary School	27
Stansted Mountfitchet		Stansted Tennis Club	27
Windmill	11	Stansted Evening WI	29
Red Cross Week	11	The Granta Chorale	29
Why 'Uttlesford'?	11	Compost Giveaway Day	29
Stansted Lunch Club	13	494 (Stansted Airport) Squadron	
Budget - What Budget?	13	Air Training Corps	31
Rainbow Pre-School	13	Rotary Club of Stansted Stort	
Skywatch	14	Valley - Profile	31
An Essex Miscellany	14	National Childbirth Trust	33
Stop Stansted Expansion	15	Stansted Bowling Club	33
Hargrave House Fete	15	Saffron Walden Choral Society	33
Citizens Advice Bureau	15	Mountfitchet Garden Club	35
Hatfield Forest Highlights	15	Something Tasty!	35
Stansted network	17-20	Index to Advertisers	36
Romanian Orphanage is a			
Real Eye Opener	21		

OUR COVER PHOTOGRAPHS

We are grateful to David Harrison for supplying many of the photographs that we display on our cover. This month, however, we thank Tudor Owen for the picture of the windmill. The cover is changed quarterly.

DISCLAIMER

Opinions expressed in this magazine are given freely and do not necessarily represent those of the editorial committee

THOUGHT FOR THE MONTH

On 6th May polling stations across the country will open in what has been described as the most contested General Election for a generation. At the heart of the political campaigning has been the question of how to lead Britain out of the global recession initiated by the banking crisis. Almost every political statement in recent months has reminded us of the huge debt that the UK has amassed and is accompanied by a range of options for reducing the debt, with measures such as efficiency savings, job losses, cuts in services etc. It seems that whatever government emerges after the election, there is pain ahead. This isn't a vision for the future that exactly lifts the spirits! It is a vision based on the premise that we do not have enough resources to continue as we are and so it is time to cut back, painful as that may be.

Notwithstanding the important economic challenges we face, I want to suggest, however, that this is not the whole story. Rather than a lack of resources, we actually have a wealth of resources at our disposal. To talk in economic terms alone is to miss the gifts that are readily available in our communities and that have the potential to make real differences to people's lives. Acts of kindness, encouragement, support, hospitality, and good-neighbourliness are some of the 'invisible' resources and gifts that are to be found in communities across the country, and I know that they are certainly here among us in Stansted. During the Second World War, people discovered these 'invisible' gifts at a time when the country faced unprecedented scarcity and was under great threat. It was the spirit of community in the hearts and minds of ordinary people that made all the difference. And so it can be now.

Politics - the life of communities - is characterised as much by the quality of relationships and community endeavour exhibited in the lives of ordinary people in everyday acts of kindness and care, as it is by Government decisions. We are all politicians in this sense. We all have the potential and the gifts to make life better for one another and our community - if we elect to do so! The choice we face is more than the cross in a box in a polling booth on 6th May, it is in those daily decisions we take in which we choose to be a good neighbour, to do an act of kindness, to seek the well-being of others, and thereby to promote and build good, safe and compassionate communities in which all of us - particularly the weak and the vulnerable - can flourish and thrive.



David Mullins
Stansted Free Church



VILLAGE SONGS OF PRAISE

On Sunday 20th June at 4.00pm, the village will be coming together in the Memorial Gardens for a 'Songs of Praise'. The singing will be accompanied by the Bishop's Stortford Town Band. We would like to know which hymns to sing. So if anyone has a request please tell Ann Conroy 812457,



Catherine Dean 813579 or David Morson 850209 by 15th May. Please say why you have chosen the hymn and whether you would like to introduce it (no obligation). More details of the event will be in next month's 'Link'.

Catherine Dean

Poverty, Let's End It is the slogan for this year's Christian Aid Week, 9th to 16th May. Unfortunately, it's a huge task, as 1.4 billion people across the world live in poverty. For many years Stansted residents have contributed to alleviating some of this poverty by giving generously in the envelopes that drop through letterboxes during the Week. Please look out for the distinctive red envelope, and continue to support the work of Christian Aid and its partners throughout the world. And it's not too late to come forward to volunteer as a collector. Please let me know if you can take part, even if just a few houses. Thanks.

Christian Aid Week will start with an Act of Worship on Sunday 9th May at 6.30pm at the Friends Meeting House, Chapel Hill. See you there.

Catherine Dean
Tel: 813579

SOCIETY OF FRIENDS

Quaker Meeting House, Chapel Hill

Clerk Mrs Anthea Lee
24 Lea Close
Bishop's Stortford
Tel : 01279 6567

Meeting Sunday, 10.30am

ROMAN CATHOLIC

St Therese of Lisieux
High Lane

Priest Father Joe White
The Presbytery
St Therese of Lisieux
High Lane
Stansted
Tel: 814349

Masses Saturday 6.00pm
Sunday 9.00am and 10.30am
Holy Days of Obligation 8.00am and 8.00pm
Tuesday-Saturday 9.30am

Confessions
Saturday 10.00am
and by appointment

Baptisms By appointment



ST MARY'S CHURCH

Special Peal

On Sunday 16th May, a peal of 5,024 changes, Yorkshire Surprise Major, will be rung at St Mary's Church. The peal is composed and conducted by Alan G. Reading. It will begin at 11.30am and last approximately three hours. St Mary's will be open to welcome visitors from 11.00am until 4.00pm on that Sunday. Light refreshments will be served.

Midsummer Event

Throughout England's 340 churches in the care of the Conservation Trust 'A thousand years of history within their walls', events will be taking place on 17th, 18th, 19th and 20th June. To mark our contribution, St Mary's Church will be open on all four days from 11.00am to 5.00pm. An exhibition of 'Stansted - The Way We Were' in photographs and artefacts contributed by organisations and individual families, will be displayed in the church. In addition, the Mountfitchet Mathematics and Computing College will be performing lunchtime concerts on Thursday 17th and Friday 18th. On Saturday 19th June at 4.00pm - 'These You Have Loved' - a programme of sacred and secular music, with Keith Turner, organist, and visiting musicians and singers. Refreshments will be served throughout opening times. More information will be published in the June 'Link'. Offers of photographs of past events in Stansted will be most welcome; please contact any of us. This Midsummer Event will be advertised nationally via websites, local radio and press - maybe even on TV!



Barry and Ros Francis
Tel: 817327
Stella Rodgers
Tel: 814814
Audrey Rodgers
Tel: 812162



All enquiries: The Church Office, St John's Hall,
St John's Road, Stansted CM24 8JP
Tel: 815243
Email: st.johns.church@btinternet.com
Office hours: 9.00am-12 noon, Monday,
Wednesday, Friday
Administrator: Mrs Elizabeth Jennings
Website: www.stansted.net/stjohns

Rector: Rev'd Paul Wilkin
Tel: 812203
Email: paulwilkin@iname.com

Assistant Curate: Rev'd Giles Tulk
Tel: 817155
Email: stansted.curate@googlegmail.com

Director of Music: Lorraine Everett
Email: church.music@stansted.net

Church Hall Bookings: Joy Lambe
Tel: 817937
Email: joy@popcornwebdesign.co.uk

St John's Diary

Sunday
8.00am Said Holy Communion
9.30am Worship 4 All (1st Sunday)
9.30am Choral Eucharist (2nd -
4th Sundays)

Monday-Tuesday and Thursday-Friday

8.30am Morning Prayer
Tuesday
9.00am St John's Tots
Wednesday
9.00am Morning Prayer
10.00am Holy Communion
There are services of Holy Communion on the first Tuesdays and Wednesdays of the month in Norman Court, Hargrave House and Broome End Nursing Homes.

Saturday
9.00am Morning Prayer

Monday-Friday
5.00pm Evening Prayer

From the Registers

March

Funerals

3rd Peter Thomas Gilbey Chastney, age 76 - at Parndon Wood followed by Memorial Service at St John's
23rd Elsie May Smith, age 96 - service at St John's followed by cremation at Parndon Wood

ST JOHN'S 300 CLUB

The first draws for the St John's 300 Club will take place on Monday 31st May in the King's Arms, Station Road at 7.00pm. Come along and see if you are a winner!

Francine Cope

JAZZ AT ST JOHN'S

Peter Baker and his Crusty Jazzers performed in St John's Church on 9th April. It was a splendid evening and the proceeds helped to defray the expenses, including damage repair, needed to the Church Hall. Thanks to Ray Smith and his helpers, and of course, the Jazzers.



ST MARY'S CHURCH, ELSENHAM FLOWER FESTIVAL FRIDAY 21st TO SUNDAY 23rd MAY

The Flower Festival will be opened on Friday 21st May at 2.30pm by Mr Walter Gilbey, the grandson of the late Sir Walter Gilbey of Elsenham Hall. On Saturday 22nd May the Nazeing Hand Bell Ringers will play a selection of music from 2.30pm. At 7.30pm there will be an introduction to the bat life in the church with an informative talk and chance to observe these wonderful creatures, as darkness falls. The Flower Festival will be open on Friday 2.30pm to 6.00pm, Saturday 10.00am to 6.00pm and on Sunday 10.00am to Closing Vespers at 4.45pm. Refreshments will be served in the Refreshment Tent, and 900 Merchandise and the 900 celebration beer will be on sale. Mr Gordon Barker's new book about St Mary's Church is being launched during the Flower Festival and Mr Barker will be in attendance on all three days from 2.30pm to 4.00pm to sign copies. For further information or if you wish to have a flower arrangement in the church and/or a pew posy in memory of a loved one, please contact me. Space is becoming limited, so please phone soon to avoid disappointment.

Avril Braidwood
Tel: 812489

FARNHAM HANDBELL RINGERS

If anyone would like to try ringing handbells with a small group in Farnham, please ring Freda Nancarrow in Farnham on 01279 771717.



We would be delighted to welcome any new players and the ability to read music is not a necessity.



SHALOM

At 8.00pm on Monday 10th May, we will be sharing readings, songs, music and other items on the theme of Pentecost. This meeting will be at 7 Blythwood Gardens. On 24th May at 8.00 pm, our 'At Home' will be at the house of Harry and Edna Goreing, 13 Blackbushe, Bishop's Stortford (tel 503764). All are welcome.

Marion Dyer
Tel: 814059



STANSTED FREE CHURCH

Methodist / URC
Chapel Hill

www.stanstedfreechurch.org.uk

Ministers

Rev'd Allen Morton
Tel 757635
minister@stanstedfreechurch.org.uk

Rev'd David Mullins
Tel 654475
minister@stanstedfreechurch.org.uk

Lettings

Marion and Mike Dyer
7 Blythwood Gardens, Stansted CM24 8HG
Tel 814059
lettings@stanstedfreechurch.org.uk

Preachers for May

2nd	10.30am	Rev'd Tim Richards - Baptism
9th	10.30am	Rev'd David Mullins - Communion
16th	10.30am	Rev'd Allen Morton
23rd	10.30am	Andrew Brown
30th	10.30am	Maureen Kendall

Organ Recital

Our recent Organ Recital with the extremely talented Brian and Claire Heald was a real musical feast to suit all tastes. All 80 tickets were sold and we raised £400 for Methodist Homes. Look out for the next one!!

Marion Dyer
Tel: 814059

Pilots

During the last term Stansted Pilots have explored the work of Mission Aviation Fellowship (MAF). Michelle King who is the Area Representative for MAF and is one of our Pilot officers, arranged a special evening of fun activities with Kevin Crook, the UK Co-ordinator. Kevin told the children of a new venture called 'Above and Beyond' which is the children's and young people's branch of the charity. He invited them to join and several took the opportunity to do so.

Over the summer term we hope to do some fund raising for MAF, as they are being hit financially by the rising cost of aviation fuel, considering that one of their aircraft takes off every three minutes throughout the world on a mercy mission.

Stansted Pilots have adopted MAF as their chosen charity and we hope to have an Exhibition of Paintings by local artist, Arthur Law, who is also a Pilot officer, in conjunction with a coffee morning and a visual aid presentation explaining the work of the organisation. Pilot evenings are full of fun activities and if you have a child over the age of five who would like to join our Pilot Group please contact me.



Valerie Trundle
Tel: 813433
Email: pilots@stanstedfreechurch.org.uk

GOOD FRIDAY PROJECT 2010

Photos: Mike Howes

Well, it's all over now for another year. It was a great day. It started early in the morning as we scurried around setting up the church, the church hall and the school. When 50 children arrived, it was bedlam, but very soon they were settled in listening to Fran telling the story of the first Good Friday. They then split up into their groups and were led away by their 'minders'. The children quickly became enthusiastically involved in their various tasks; crafts, art, drama, costumes and music.



The day just ran smoothly. There were refreshments mid-morning – very welcome – thanks to Rosemary and Christine. At lunchtime it was fine enough for the children to let off a bit of steam in the school playground. We then had one more session and everyone piled into the church for the final rehearsal. This was a bit chaotic and I wondered if the performance was going to

be one big messy flop. But, at 3.15pm, when the parents filed into their seats to watch their children perform, everyone magically became attentive, quiet and everything ran like clockwork! I think everyone enjoyed the day. We



certainly sent home some very tired, paint-stained and excited children. All that was left was the tidying up.

I want to thank everyone who helped. I couldn't possibly name them all, but I will mention a few who went above and beyond. To Christine Tonkins, headteacher at St Mary's School, for making the school available to us and for leading the music group. To Julian Vulliamy for stepping in at the last minute to play the piano for us. I don't

Photos: David Richardson

think he quite knew what he had let himself in for and will never hear 'One More Step Along the Road' in the same way ever again. To Juliet Richards for taking my original idea and writing it into a performable play. To Fran Richards for directing the drama and for coping with all the tired children in that last rehearsal. To Carole Crosby for her wonderful



artwork – the boat was brilliant! To Sue Bone for her craftiness and way with flowers! To Joan Kennett who's such a whizz with all those costumes and was willing to let her



spare bedroom become a heap of donated materials. To Mike Howes and David Richardson for their great photos, some of which you can see here. To Ian Jonas – who had to take a day's leave from work to make sure he was with us – lighting and miking up all those children so that they could be seen and heard. And thanks are also due to Cheryl McGreal for her support throughout the Project. Everyone is now asking about next year's Project, and if there are people who would like to make up a Good Friday 2011 committee, starting in the autumn, I am very happy to join them.

Janet Wilkin

DANIEL ROBINSON & SONS

Independent Family Funeral Directors
& Monumental Masons

24 hour Family Careline

For help, advice and assistance, please telephone:

79/81 South Street
Bishop's Stortford
(01279) 655477

3 Bullfields
Sawbridgeworth
(01279) 722476

146 High Street
Epping
(01992) 560890

Wych Elm
Harlow
(01279) 426990

Haslers Lane
Great Dunmow
(01371) 874518

Shire Hill
Saffron Walden
(01799) 523314



Golden Charter
Funeral Plans

www.drobinson.co.uk

D BONNEY & SONS (Manuden)

MOT Testing ~ Diesel & Catalyst

Selection of New & Used Cars

Accident Recovery Work

Welding & Chassis Repairs

Borg & Beck Clutch Point Centre

Calor Gas Stockist

We help YOU the motorist by

- cheaper labour rate
- guaranteed workmanship
- free collection & delivery in local area

Familiar with most makes of vehicles
including four wheel drives

Please ring Malc or Neil on 01279 813315 or 815946

Greenways Financial Planning

INDEPENDENT FINANCIAL ADVISERS

An Authorised Representative of Sesame Ltd. which is
Authorised and Regulated by the Financial Services Authority



Professional friendly advice
on



Investments ~ Pensions ~ Mortgages

Life Assurance ~ Critical Illness

Income Protection ~ Annuities

Estate Planning ~ Long Term Care

David Turner Cert PFS CeMap
Principal

'Greenways' Park Rd Elsenham CM22 6DF

Tel/Fax 01279 816622

e-mail dturner@greenways-financial-planning.co.uk

Spangles

Children's Centre

Lower Street, Stansted CM24 8LR
www.spangleschildrenscentre.org

- ☆ Variety of activities for ages 0 - 5
- ☆ Fully qualified staff
- ☆ Open 9 am - 5 pm every weekday
(except Bank Holidays)
- ☆ Information for all your family needs
Call us or drop in for a look around
& pick up a time table.



01279 812348

SureStart



How are **YOU** feeling today?

We offer Chiropractic, Acupuncture, Massage and Rehabilitation Exercise for the treatment of:

**Back Pain, Neck Pain, Sports Injuries, Migraine and
Other Joint and Muscle Problems**

Recent guidelines published by the National Institute for Health and Clinical Excellence (NICE) recommends the option of spinal manipulation, acupuncture and exercise for the management of certain types of low back pain. www.nice.org.uk/cg88

We are offering an initial consultation with the **Chiropractor** which includes a thorough physical and spinal examination for **£25** (normal fee £45) on production of this advert.

Digital X-ray & Bone Density
Scanner available on site

MRI on referral

**Stansted Chiropractic
and Back Pain Clinic**

01279 815336



IMMEDIATE ACCESS
No GP referral required

Members of the
British Chiropractic
Association

BUPA and AXA/PPP
recognised

Mark Gurden MSc (Chiro), DC, PhD
Marcell Morelli MSc (Chiro), DC

Doctors of Chiropractic
Registered Chiropractors

20 Cambridge Road,
Stansted CM24 8BZ

www.greatback.co.uk

BOWLING FOR BEGINNERS
FREE Introductory Session
1 - 4 pm Sunday 2nd May
ALL WELCOME

A friendly & informal session!
 We look forward to seeing you at the
 Bowling Club, Recreation Ground
**Please bring flat shoes &
 a sense of humour!**
Everything else is supplied
Enquiries tel 816932 or 816144



**St Mary's
 Church Open**

2- 5 pm Sun 2nd May

11 am - 4 pm Sun 16th May
 when a 5,024 change peal
 The Yorkshire Surprise Major
 will be rung from
 11.30 am - 2.30 pm

Light Refreshments ~ Everyone Welcome



Stansted Windmill

Open Days
1.30 - 5.00 pm

Note earlier closing time

Sun 2nd & Mon 3rd May
Sun 9th May (Mills Day)
Sun 30th & Mon 31st May
Sun 6th June

VILLAGE EVENTS

May

1 Sat Granta Chorale
 1 Sat / 2 Sun Skips
 2 Sun Compost Giveaway Day
 Free Introductory Bowling
 St Mary's Church open
 2 Sun / 3 Mon Windmill open
 5 Wed Mountfitchet Club
 Garden Club
 6 Thu General Election
 Local History Society
 9 Sun Car Boot Sale
 Windmill open
 Christian Aid Service
 10 Mon Shalom Group
 13 Thu WI
 15 Sat / 16 Sun Skips
 16 Sun Yorkshire Surprise Major Peal
 20 Thu U3A
 24 Mon Shalom Group
 29 Sat / 30 Sun Skips
 30 Sun / 31 Mon Windmill open

St Mary's, S Walden 7.30 pm
 Lower St Car Park 9 am - 3 pm
 Lower St Car Park 9 am - 3 pm
 Bowls Club 1 - 4 pm
 2 - 5 pm
 1.30 - 5 pm
 Day Centre 2 - 4 pm
 Day Centre 7.30 for 8 pm

Day Centre 8 pm
 Mountfitchet College 11 am - 2 pm
 1.30 - 5 pm
 Quaker Meeting House 6.30 pm
 7 Blythwood Gardens 8 pm
 St John's Hall 7.45 pm
 Lower St Car Park 9 am - 3 pm
 St Mary's Church 11.30 am
 St John's Hall 2 pm
 13 Blackbushe, B Stortford 8 pm
 Lower St Car Park 9 am - 3 pm
 1.30 - 5 pm

June

2 Wed Mountfitchet Club
 Garden Club
 6 Sun Windmill open
 St Mary's Church open
 10 Thu WI
 17 Thu - Sun 20 Midsummer Event
 19 Sat S W Choral Society Prom

Day Centre 2 - 4 pm
 Day Centre 7.30 for 8 pm
 1.30 - 5 pm
 2 - 5 pm
 St John's Hall 7.45 pm
 St Mary's Church
 St John's Church 7.30 pm



Red Cross Week

2nd - 8th May

Please support the collections
 which will be made during
 Red Cross Week in Stansted

New collectors welcome
Please contact
Christine Stiles 813172

The Mountfitchet
 Maths & Computing
 College PTA



CAR BOOT SALE

11 AM - 2 PM
SUNDAY 9TH MAY

Plus Hot Food & Refreshments
 £7 Cars, £12 Vans & Lorries
 Tel Tina on 814371 Yvonne 813071



**STANSTED
 10K
 FUN RUN**

www.stansted10k.org.uk
Bentfield Green 11am
Sun 27th June

*Raising funds for: Stansted Day Centre;
 St Clare Hospice; Samaritan's Purse
 Uttlesford Community Travel; Assin Endwa*

SERIOUS RUNNER - need a challenge
FUN RUNNER - improve your time
WALKER - enjoy a pleasant stroll



For entry form
 & more details
 please ☎
 814059
 or email us on

info@stansted10k.org.uk

Advance entry closes 11th June



**St Mary's Church
 Midsummer Event**

Thur 17th - Sun 20th June
 Church Open 11 am - 5 pm
 with exhibition 'The Way We Were'

Thur 17th & Fri 18th June
 Lunchtime recitals in the church

4pm Sat 19th June
 Concert in the church
 Light Refreshments ~ Everyone Welcome



**Songs of
 Praise**

Come and sing your favourite hymns
4 pm Sunday 20th June
 Memorial Gardens, Chapel Hill
 or St John's Church if wet

Entry Free ~ All Welcome
Please bring your own chair!



**UNITED
 SERVICE**

6.30 pm Sun 9th May
Quaker Meeting House

**HOUSE TO HOUSE
 COLLECTIONS**



Collectors needed please call 813579



**Summer
 Prom**

7.30 pm Sat 19th June
St John's Church

Join in the choruses and wave a Union Jack!

Entry £10, accompanied under 18s £1
 Tickets from Stansted Carpets 812019
 St John's Church Office 815243
 or on the door

ALDWYCH CONSTRUCTION LTD
Building and Decorating Contractors
'Proper Work at Proper Prices'
PERIOD & MODERN
For estimates: Tel 01279 816701
Mob 07976 050802 Fax 01279 812656
timothy@aldwychconstruction.co.uk
www.aldwychconstruction.co.uk
23/25 Lower Street, Stansted CM24 8LN

J R JOHNSTON C&G RFS
Qualified Tree Surgeon
Fully Insured

Pruning
Dismantling
Hedge Trimming
Trees/Shrubs supplied & planted
Contract Maintenance
Tel 01920 821595

Ray Morton
PAINTER & DECORATOR
GENERAL HANDYMAN
No Job Too Small!
Free Estimates
Tel 01279 812792
8 Mill Close, Elsenham

EDDIE HO 
Fish & Chips
BBQ Chicken
Southern Fried Chicken
Pukka Pies
Beef Burgers
Station Road, Stansted
01279 817307

HELPLINE
07704 553727
If you have a **PROBLEM**
or are in need of
ASSISTANCE

Monday - Friday
9.00 am - 4.00 pm
Stansted's voluntary community care service

MEMORIALS
Direct From Stonemason
J. Day & Son
Station Road, Bishop's Stortford
FOR BROCHURE & PRICES
OR A HOME VISIT CALL
0800 7837521
Bishop's Stortford 01279 654555
Saffron Walden 01799 513110
Edmonton 0208 807 3712

 **Having a Baby?**
Confident? Apprehensive?
Preparation for Birth & Beyond
Weekly Sessions/Refresher Classes
with Jan Menell
Member of Federation of Antenatal Educators
Reg no 11864
Contact 01763 838553
janetmenell@tiscali.co.uk

CARERS UK
Uttlesford District Branch
"Caring about the Carer"
Carers are the biggest provider of
health and social care in the UK.
We offer help, support and advice
If you would like to know more
about us, call us now on:
01371 875810
Email: uttlesford@carers.entadsl.com
46 High Street, Dunmow CM6 1AN
Registered Charity No. 246329

Computer Users!
Mac & PC Repairs
software & hardware upgrades
computer repairs 
call:
Alan Horsley
Tel: 01279 835475
Mobile: 07952 970324
No call out fee ~ Viruses eradicated
FREE antivirus ~ No job too small

THE
POCKNELL FOOD CO
FINE DINING AT HOME
Pocknell Food can cater for any occasion.
Whether it be a big party or an
intimate dinner we can help.
Please call Olly to discuss your event
01279 816 215 or 07875 391 701
email pocknellfood@btopenworld.com

JONES & CO 
Plumbing and Heating Engineers
Installation and Maintenance
Boiler and Cylinder Replacements
Bathrooms ~ Gas and Oil Services
Please contact David Jones
Tel 01279 815877 Mobile 07860 213760
Email djonesco@talktalk.net

CARERS UK
Uttlesford District Branch
"Caring about the Carer"
Support group for carers held in
Stansted Quaker Meeting House, Chapel Hill
on 2nd Thursday in each month from 2 pm to 4 pm
For more information call **01371 875810**
or email: uttlesford@carers.entadsl.com
Registered Charity No. 246329

 **Perfect Plastering Services**
♦ All Aspects Undertaken
♦ Clean, Reliable Service
♦ Free Estimates
Matt Freeman
Tel 01279 812524 Mob 07793 887198
freeman223@hotmail.com



STANSTED MOUNTFITCHET LOCAL HISTORY SOCIETY



The talk given at this month's meeting was different from our last in that it was about a very local family, although it is no longer represented in the village - the Fuller Maitlands. This is surprising as at one time, with three sons, the family's future seemed assured. The family's fortunes began with Ebenezer Maitland, who was born in the middle of the 18th century, whose business was established in the City of London and also was a Director of the Bank of England for around 30 years. He was involved in the running of two church schools among other good works and there is a monument to him erected in Maitland Road, adjacent to Maitland Park, in London. However, he lived by Clapham Common and there is no record of him coming to Stansted. Ebenezer had several children, the eldest of whom was William, who also became involved with banking and property and who married Bithia Fuller. They came to live in Stansted and some indication of the family fortune may be given by the fact that their legacy for the building of an Almshouse in their memory was for £500,000 - about £16 million today!

William also had a large family and he was followed by his son, Ebenezer. He was married to Bethia Ellis but in 1807, they took the name Fuller Maitland by Royal Letters Patent. He became an MP and was involved with the Hand in Hand Insurance Company, later Norwich Insurance and more recently, Aviva. Bethia, it seems, became a pioneer photographer but her husband notably died on a train journey to Brighton in 1858. William had a number of children, the eldest being named after himself, who in time married Charlotte and succeeded to his father's estate. The son was a great collector like his father, not only of pictures but of coins and books as well but in his personal affairs he seemed to have great misfortune. He it was who had the three sons but with one killed in 1912 by an elephant while big game hunting, another killed early in World War I at the Battle of the Aisne and another wounded in 1916 at the Battle of the Somme, the future for the family took an unfortunate turn. William had undertaken the rebuilding of Stansted Hall in 1871 but did not live to take occupation of the new building. The remaining son did not wish to occupy it and it was sold, ultimately to become the headquarters of The National Spiritualists' Union. As far as Roger Barrett has been able to ascertain, there are no male members surviving at this time. We are most grateful to him for his most interesting talk, which was far more detailed than I have room (or skill) to give here. He was thinking about preparing a book on this most influential family and I sincerely hope that he will do so.

In the meantime, we have come round to the last meeting of the season and will be holding our Annual General Meeting. This will be on 6th May at 8.00pm in the Day Centre and, as usual, our Chairman, Peter Brown, will be keeping the business as short as possible. It will be followed by one of Peter Sanders' inimitable presentations which we all enjoy. See you there!



Ian Seavers

11.00am Sunday 27th June

Planning is now well under way and we have already had **over 40 entries** for this year's event. We have had some response to our appeal last month, but still urgently need more helpers for the following:

- Registering the entrants before the race
- Marshalling the route
- Helping with the barbecue
- Helping with the water points on the route
- Giving out water and medals on the green
- Helping to set up in the morning
- Helping to clear up at the end

Also, if any local businesses would be interested in sponsoring us, even if only a small amount, we would be very pleased to hear from you. All our sponsors are publicised on our entry forms, posters and website, and on Bentfield Green on the day of the run.

Marion Dyer

Tel: 814059

Email: info@stansted10k.org.uk



Huw Johnson Club

The Huw Johnson Club had a short break over Easter but we are now all set to enjoy our summer session. This will involve a BBQ, a trip to somewhere exciting (yet to be decided) and all our usual activities. We have had a patch of bad luck as several of our usually very active helpers have been unwell. However, all are making good recoveries and will soon be back at the helm. Look out for notices of a coffee morning. We welcome visitors to our Thursday evening sessions, but please ring me first as we do not always meet in St John's Church Hall.

Marion Johnson

Tel: 812284

TONG REN ENERGY HEALING THERAPY

Seeks to remove blockages and restores the body's natural ability to heal itself, even when illnesses are chronic, debilitating, or otherwise untreatable

**TONG REN FOR THYROID PROBLEMS,
MULTIPLE SCLEROSIS, DIABETES & OTHER ILLNESSES**

FOR MORE INFORMATION CALL

07725 566 571

ENERGY-HEALING@GMX.COM

Back to Basics Pilates Class

with Hazel Williams Registered Osteopath



Mondays 8 - 9 pm & Saturdays 9 - 10 am

Beginners' Class Fridays 7 - 8 pm

The Quaker Hall, Chapel Hill, Stansted.

To book one of the limited spaces available or find out more please call Hazel on **01279 813371** or **07973 409675**

Please wear loose clothing and bring an exercise mat.

Free introductory class throughout this month

Do-It-4U

General Handyman

Home & Garden Repair, Care & Maintenance

- ◆ Plumbing, Electrical & Carpentry Services
- ◆ Drain Blockages Cleared
- ◆ Gardens Tidied & Maintained
- ◆ Hedges & Topiary Trimmed & Shaped
- ◆ Fences Erected & Repaired
- ◆ Gutters Cleaned, Repaired or Replaced
- ◆ Sheds & Other Sectional Buildings Erected

Tel 01279 814411 Mobile 07774 877320

Lavender Blue Health & Beauty

Skin care,
nail treatments,
swedish &
aromatherapy
massage,
waxing,
electrolysis &
eye treatments



The Stables, 72 St. John's Rd, Stansted, Essex, CM24 8JS

Tel: 01279 647784

www.lavender-blue.co.uk

laurablethyn@hotmail.com

MILLWAY

OFFICE SUPPLIES & ART AND CRAFT SUPERSTORE

CHAPEL HILL, STANSTED MOUNTFITCHET, ESSEX CM24 8AP

TEL: 01279 816659 ~ www.millwaystationery.co.uk

STOCKISTS OF HORNBY, LEGO, MECCANO, AIRFIX,
DMC, ANITA'S CRAFTS, ENCAUSTIC ART, FIMO,
SCRAPBOOKING, WINSOR & NEWTON,
DALER-ROWNEY, RUBBER STAMPING, FABRIC PAINTS,
FACE PAINTS, HELIUM BALLOONS, GREETING CARDS & WRAP.

**AT OUR SUPERSTORE WE HOLD IN STOCK
OVER 30,000 PRODUCTS**

ALL YOUR STATIONERY NEEDS FOR THE HOME AND OFFICE
INKJET CARTRIDGES, LASER TONERS, CDRs, PAPER,
ENVELOPES, FURNITURE, FILING PRODUCTS,
FILOFAX, PARKER.

OPEN:

MON-FRI 8.30am—5.00 pm SAT 9.00am—1.00pm

FREE PARKING

Why live with your aches and pains?

Hazel Williams is one of the few practitioners who specialises in both structural and cranial osteopathy to treat a wide range of patients from babies to the elderly, from the immobile to athletes.

Her treatment can help with: back, neck, joint, arthritic and muscle pain, trapped nerves, sports injuries, headaches and migraine.

She also incorporates acupuncture to aid pain relief and provides specially formulated pilate classes to help with rehabilitation.

Her aim is simple... **to give you continual relief from pain wherever possible.**

To claim your **free assessment consultation*** call Hazel Williams at her surgery on **01279 813371**

61 Blythwood Gardens, Stansted, Essex CM24 8HH

osteopathy@hazel-williams.co.uk

*Hazel Williams reserves the right to remove or change this offer at any time without prior notification.

the osteopath



Manufacturing Jeweller

(established since 1978)

- Wedding / engagement rings
- Remodelling your jewellery
- Old Gold bought
- Bespoke jewellery created
- Home appointments by arrangement

Mobile: 07900 931 910

Workshop: 01279 647 878

www.jewellerybyjohnwilson.co.uk



STANSTED MOUNTFITCHET WINDMILL

Our magazine cover for the next three months shows the cap after its refurbishment, which is being completed at the time of writing. It is now capable of rotating 360° by the action of the fan-tail, which catches any changes in wind direction, so ensuring that it is kept in the eye of the wind at all times. This mechanism, together with that which controls the angle of the shutters, is simple in principle but requires finesse on its adjustments. It is a testimonial to windmill folk, or moulinologists to give them their correct title, over many hundreds of years that a high degree of control can be achieved using mainly natural materials fashioned on the site. When the millstones are operating, which is a stage we have not so far reached, the gap between the stones is critical to within a millimetre, and the speed of their rotation a matter of the miller's fine judgement. A mistake or maladjustment could produce a disaster and the loss of one's living.

We gratefully acknowledge the professionalism of the IJP team. They have impressed us with their thoroughness in very trying weather conditions, which makes it most unlikely that we shall have the misfortunes which have so recently afflicted our fellow mill team in Thaxted.

We aim to re-open to visitors on Sunday 2nd, 9th and 30th May. A more grand occasion is being planned for later in the summer.

Derek Honour

The Coffee Morning held in March by Stansted Millers raised some £200. The Millers' sweatshirts are seen to advantage.



RED CROSS WEEK 2nd-8th May 2010

There will be door to door collections in Stansted during this week as part of the annual fundraising event. The Red Cross helps people in crisis, wherever and whoever they are, both in the UK and abroad. Some of the ways the money is spent are:

First Aid - training people to cope with emergencies and providing first aid cover at public events.

Medical Equipment - short and long term loans eg wheel-chairs, walking frames (new medical equipment centre is now open in Harlow).

Care in the Home - volunteers help people after stays in hospital.

Therapeutic Care - this provides gentle massage for people in stressful situations.

Skin Camouflage - shows people how to cover a wide range of skin conditions.

Emergency Response - the Red Cross responds to hundreds of emergencies in the UK each year.

International Work - responding to major disasters around the world - refugee support and assistance - international tracing and message service, putting people back in touch.

Your support for these collections will be really appreciated.

Christine Stiles
Tel:813172

WHY 'UTTLESFORD'?

(Taken from 'The Fountain' of Winter 1979/80, with acknowledgement to the late Irving Sanders.)

'Uttlesford District Council takes its name from the ancient Hundred of Uttlesford, which in turn appears to derive its name from a ford within the parish of Saffron Walden, not far from Audley End, in which Sir Edward de Bohun was drowned in 1333. Parishes which comprised Uttlesford Hundred were: Saffron Walden, Stansted Mountfitchet, Great and Little Chesterford, Wimbish, Debden, Widdington, Henham, Elsenham, Takeley, Birchanger, Quendon, Rickling, Newport, Wicken Bonhunt, Arkesden, Wenden Lofts, Wendens Ambo, Littlebury, Strethall, Elmdon and Chrishall. Heydon and the Chishills, which were part of Uttlesford Hundred and Clavering Hundred, are now in Cambs. In Stansted the boundary between Uttlesford Hundred and Clavering Hundred ran along the main road (Ex A11), everything to the west being in Clavering and everything to the east being in Uttlesford. Since little more than a third of Uttlesford District was ever in the old Hundred, the title of the District Council would appear to be something of a misnomer which we must get used to.'

Stansted Electric

From fitting a light to a complete rewire

Showers installed ... Ovens / Hobs Connected

Handyman Services ... Free Estimates



Phone Jim on 07921 908214

Telephone: 01279 816399

Email: enquiries@stanstedelectric.co.uk





NEWMAN'S

HOME SERVICES LIMITED

Plumbing • Heating • Electrical

Kitchens • Cloakrooms • Bathrooms • Showers

Tel/Fax: 01279 814437 Mobile: 07831 233681

A.C.WRIGHT

BUILDING CONTRACTORS

Orchard House, 5 Brewery Lane
Stansted, Essex CM24 8LB

Tel. Bishop's Stortford (01279) 815759

Fax. (01279) 812484

Mobile 07974 989938



Taylor Computer Services (Stansted)

On-site Computer Maintenance/Repairs for Home or Business

**DON'T BE RESTRICTED TO OFFICE HOURS, I CAN VISIT
YOUR HOME OR OFFICE DURING THE DAY, EVENINGS
OR WEEKENDS AT A TIME TO SUIT YOU.**

**Wireless Networking and Broadband Setup, Data Transfers,
Hardware & Software Installation, Virus & Spyware Removal &
Protection, New PC Setup & Training**

Call Derrick on 01279 816418 ~ 07926 289749

Email: info@tcsstansted.co.uk

ALBURY ELECTRICAL SERVICES

LOCAL FAMILY BUSINESS Est 1984

All Electrical Installations
Electrical Inspection, Testing & Certification

NICEIC APPROVED. ALL WORK GUARAN-



Tel: 01279 771510 or 01279
652588

Fabrications

*is the local company for all soft furnishings,
made from our fabrics or your own.
Wallpapers, tracks and blinds also supplied.*

For free advice and measuring service call

Sue 01279 777465 or Carol 01279 777480



MOBILE HAIRDRESSING



*By
Emma Russell*

Eleven years experience ~ Flexible Hours

Tel: 07789 760 788 or 01279 817018

FAMILY NEWS

13 Chapel Hill, Stansted CM24 8AB

Newsagents ~ Tobacconist ~ Confectioners
Sweet Picks ~ Cards & Toys ~ Fax ~ Photocopying
Printing ~ Laminating & Scanning ~ Phone Top-Ups
Electricity and Gas Top-Ups (Cards & Keys)
Utility Bills & Council Tax Payments
We do Home Deliveries & Shop Saves

OPEN: Mon - Sat 5.30am - 6.15pm; Sun 5.30am - 4.30pm

Tel / fax: 01279 813485



RAY THE PLUMBER

Need a reliable Plumber or Tiler?

...call RAY 07957 323686

Efficient service
Reasonable rates

City and Guilds 6129 & Gold Trowel trained



**Your local
print shop, with
parking!**

Where bright ideas are realised!

Tel: 01279 657769 Fax: 01279 503151

Email: drew@copyzone.co.uk Web: www.copyzone.co.uk

Unit 3 Southmill Trading Centre, Southmill Road, Bishop's Stortford, Herts. CM23 3DY

STANSTED LUNCH CLUB

March Lunch (38 guests and over 80 apologies)

We had a very select gathering on 17th March with attendance which fell below 50, for only the second time since the Club first passed that milestone as long ago as September 2005. Unquestionably the lapse is attributable to the awful prospect of listening to me, when Michael McCook-Weir, a former military, civilian and management pilot, offered to speak on aviation matters which he did with casual aplomb and great good humour. With a name like Danny Doyle, it surprised us not that the menu included a robust Irish stew and pistachio green ice-cream – sadly the emerald of Danny's forefathers eluded him on this occasion! It was, however, our good fortune that the culinary skills of his colleagues at Pearse House did not elude them and that the entire repast passed muster with consummate ease for which we, as always, were inordinately grateful.

Sponsorship

There are four more lunches in 2010, all of which are being sponsored, though I could do with a second sponsor in July to share the promotion of St Clare Hospice with Weston Business Centres. For the sponsor, sponsorship raises the local profile of its business at relatively small cost. There is a modest contribution to administrative costs which earns the privileges of being warmly thanked; of generally being treated with respect; of having electronic literature distributed with invitations; of speaking lightly and humorously on some topic associated with the sponsor's business (no overt sales pitches are allowed). In addition to the contribution to administrative costs, there is an optional contribution or subsidy which goes directly towards the cost of lunch and to the cost of each member's lunch. For this the sponsor earns even warmer thanks and respect, the temperature of the thanks being directly proportionate to the amount of subsidy (typically the level of subsidy ranges between £5 and £10 per member attending a lunch). I have opened the lists for 2011 and I should be most grateful if prospective sponsors would contact me from late April onwards, when I return from the Antipodes to these shores.

Future Lunches

19th May Savvy Business Community

14th July St Clare Hospice sponsored by Weston Business Centres

Alastair Richardson

Tel: 07850 295109

Email: amg.richardson@gmail.com

Gardening Services & So Much More...

- Pressure Washing
- Shed & Fence Painting
- Dog Walking
- House Sitting & Plant Watering
- Letter Writing & Proof Reading
- Any tasks considered – try me!

No job too small, call me today.

GILL OWEN : 07903 375225 or 01279 814616

BUDGET – WHAT BUDGET?

This year's Budget was probably one of the least eventful in memory. There were no spectacular, headline-grabbing announcements, it was very much a 'don't rock the boat', pre-election Budget. The cuts and tax increases that the main parties all say are necessary will be a headache for whoever is chancellor after the election. There were a few points to note however.

Affecting ordinary taxpayers and businesses is an announcement to spread a planned 3% increase in fuel duty in April over the nine months up to next January. Also, as mentioned in previous articles, the personal allowance and tax rates and bands for companies and individuals are frozen in the new tax year. The future increases in National Insurance remain. There is, of course, the new 50% tax rate for those lucky enough to earn over £150,000 and the gradual withdrawal of the personal allowance for those earning over £100,000.

For businesses, two popular tax breaks have continued. The 100% write-off allowance for fixed asset purchases will continue in 2010/11 and the upper spending limit has doubled. Also, for people selling their business, the special 10% rate of capital gains tax will continue for another year and the upper limit for relief at the special rate has doubled. There were fears that both of these breaks would be withdrawn to quietly collect more tax. Another area of help is the reduction of business rates for smaller businesses from October. In certain cases a business may not need to pay any business rates at all for a period from that month.

There was one announcement that will help any first time buyers saving hard for their home. Stamp duty will not be payable on purchases up to £250,000 for anyone not previously on the Land Registry. For once this is a housing related break that actually helps people in the Stansted area!

Mark Williams FCCA ACIS
Mansell & Co LLP



This month the children have been very busy in the run-up to the Easter break. Firstly, they made some beautiful cards for Mothering Sunday, which brought tears to the eyes of their proud mums. They have also been practising finding hidden items in the outside area in preparation for the Easter Egg Hunt on last day of term. As part of their continuing learning about themselves and their health, the children have been looking at the story of The Selfish Crocodile, which encouraged discussion about taking care of your teeth and visiting the dentist. The Pre-School staff have also been busy receiving further training in autism, speech and language where the emphasis is on developing the children's listening skills so that they can progress to letter sounds. If you are interested in a place at the Pre-School from September please contact Gill Pursglove on 814701 for further information. If you are interested in a place for your child at Rainbow Tots (age 18 months to 2½ years) please contact Tina South on 814371.

Liz Stanley
Rainbow Committee



April 2010 brings us to the 40th anniversary of the third mission to the Moon, Apollo 13. The plan for this trip was rather more ambitious because the experience learned from Apollos 11 and 12 on the capabilities of the Lunar Module, suggested that it would be safe to land in somewhat more rugged terrain than the intentionally 'flatter' locations chosen for the earlier missions. Everything was going well as Apollo 13 was coasting towards the ever-growing Moon. The three days or so between Globes is far from a boring, nothing to do time. There are plenty of things to do and one of them is to stir the oxygen. The ship's oxygen is in liquid state, in very well insulated containers which are, in turn, kept cool by liquid helium, the coldest liquid that there is. The spacecraft is weightless (some will remember seeing the astronauts floating around in the capsule) so the liquid oxygen doesn't 'flow' anywhere without encouragement. So, in the Command Module, having been prompted by Houston, one of the astronauts flicked a switch to start up a small heater designed for the job. There followed a bang that made all three occupants start.

In the Command Module the crew were finding alarms wherever they looked including power and oxygen supplies. On the ground, the masses of people that watched the screens thought they were having the failure in their computer systems, so 'impossible' were the numbers. It was when the Captain looked out of his window and saw gas venting that he knew how bad it was. The crew were trying to preserve the life of the Service Module but it soon became clear that the only thing to do was to use the Lunar Module to get home. They had five or six days of very little water, in a deeply cold capsule. Navigation was almost at the Boy Scout level, at one point by watching when the Earth passed a mark on one of the windows in the Command Module while a colleague was using the Lunar Module's thrusters to ensure they were pointing the right way. But behind all this work was the great uncertainty as to whether the ceramic heat shield that burns away as the Command Module hits the atmosphere, had been damaged. We know they made it. How true was the description of the Mission as a Magnificent Failure.

Martin West
Mooncraft Productions

AN ESSEX MISCELLANY

In the Stansted area we are familiar with predominantly clay, chalk and gravel soils and their characteristic vegetation, so we have little experience of marshes and none of heathland. If we stay in Essex the nearest true heath is a 50-acre Site of Scientific Interest (SSI) at Tiptree, which is host to numerous heather types, with dormouse and common lizard among its fauna. Much of it is acidic grassland, which has led the voluntary conservators to fence about half of it and introduce Dexter cattle to graze it during the summer. This is encouraging a varied flora, and largely eliminating the gorse, willow and bracken. The trampling by the cows should foster a good beetle and reptile population. Nowadays heaths do not stay that way without our intervention.

Interestingly, within Tiptree parish there is the famous 300 acre fruit farm, which was developed after parts of the heathland were 'improved' and made suitable for farming, and which has been in the Wilkin family since the 1860s. Arthur Wilkin left the farm at the age of 15 to work in London, but by the age of 24 was back at Truelands Farm with his parents. Arthur was growing fruit to send to the jam makers in London. He was a strong non-conformist and social benefactor who insisted on the highest quality. Disappointed by the

transport of the day which spoilt his fruit, he decided to try and make strawberry jam in his mother's kitchen on the farm. His jam-making business slowly began to flourish and became the successful enterprise, which continues until the present time. Now with a Royal Warrant, Tiptree's many jams, which have no glucose, artificial colouring or preservatives, have a worldwide reputation. A lunch or tea at their Tea Room can be followed by a walk on the Heath (also owned by the Wilkins) that lies on the other side of the village. Tiptree, like Stansted, has grown into a small town and is worthy of a visit. No advertisement intended!

The Dexter cows at Tiptree have nearer companions at Sawbridgeworth Marsh, where, last summer, six Highland cattle were introduced by The Essex Wildlife Trust to control the coarse grasses and thistles. The Marsh is noted for orchids, marsh valerian and skullcap. The regime will be repeated this year, since being an SSI it will qualify for DEFRA's high level scheme for wetland improvement. The cattle themselves may become a visitor attraction, but if you go before they arrive you may have the orchids for company instead. Our county certainly has its merits!

Essex Man





Government Airport Policy in Disarray after High Court Ruling on Heathrow

SSE has welcomed a High Court ruling on 26th March that the Government's 2003 Air Transport White Paper is outdated and needs to be rewritten to take account of climate change targets. Today's judgment has major implications for airport expansion battles across the UK. The ruling effectively denies policy support for new runways at not only Heathrow but also Stansted where BAA has clung steadfastly to the notion that the 2003 White Paper provides an absolute mandate for its second runway plans. The judgment was delivered by Lord Justice Carnwath in response to a Judicial Review brought by Greenpeace and 12 other groups, including local councils, residents' groups and other leading environmental organisations, against proposals for a third runway at Heathrow. The judge said that the Government's 2003 Air Transport White Paper did not fully take into account the effects of climate change and must be radically overhauled to bring it in line with the 2008 Climate Change Act and other material changes since the aviation policy was first published. He also ruled that the carbon costs of aviation emissions need to be included when assessing the economic benefits of airport expansion. This is a vindication of SSE's position and marks a reversal of the position taken by the Inspector at the Stansted public inquiry in 2007. It is also a reversal of the position taken by the High Court last year when SSEs was unsuccessful in seeking to overturn the Government's decision to approve full use of Stansted's runway.

SSE has long maintained that the expansion of air travel proposed by the Government in 2003 cannot be reconciled with the objective of achieving an 80 % cut in the UK's carbon emissions by 2050. Even the Climate Change Committee - the Government's own independent watchdog - recently advised the Government that around half the planned airport expansion in the UK would have to be scrapped if the Government's own aviation emissions target is to be met and that therefore it needed to review its 2003 aviation expansion policy accordingly. BAA will be only too aware of the scale of the setback to its plans from this ruling. Without the security blanket of Government policy to rely on, the airport operator knows its chances of securing a favourable result from any future public inquiry into a second runway at Stansted are extremely doubtful.

Carol Barbone
Campaign Director
Tel: 07775 523091
Email: cbarbone@mxco.co.uk

CITIZENS ADVICE BUREAU

The Stansted office now operates every Thursday from 9.30am-12.30pm in the Youth Centre, Lower Street. Please note that interviews are by appointment only. Ring 08444 775986.

HARGRAVE HOUSE FETE

Hargrave House is holding a Summer Fête at 2.00pm on Saturday 26th June, as it was such a success last year. We hope that it will again be well supported and that the weather is kind to us again. Any donations for our raffle and tombola stalls would be much appreciated. Please contact me for further information.

Stella Papworth
Tel: 817272

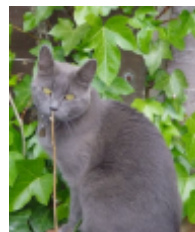


HATFIELD FOREST HIGHLIGHTS

It's May and the Forest is coming alive; the buttercups are making an appearance and we shall be welcoming our cattle back into the Forest. Grazing has been a part of Hatfield Forest's life for hundreds of years and plays an important part of the conservation work that we still carry out today. Wood Pasture is becoming a scarcer habitat throughout Europe and here at Hatfield Forest we are proud of the restoration work we carry out to keep our Wood Pasture in pristine condition. On the Forest we have three herds of cattle, kept on Takeley Hill, Bush End and the Main Plain. By grazing these areas of the Forest the cattle help us to maintain our wood pasture and encourage a richer diversity of plant life.

For those of you interested in finding out more about the variety of wild plants that can be found on the Forest, why not join Shirley on our Wildflower Walk on Wednesday 12th May? Please ring us on 870678 for more information. Some exciting news is that great crested newts have recently been discovered at a secret location in the Forest. Great crested newts are Britain's largest newt species and have faced serious decline due to the destruction of their habitat throughout Europe. Recent conservation work nationally and in the local area to protect and improve their habitat has meant that we can now welcome these newts to the Forest. Until next time I hope to see you all soon in the Forest and don't be afraid to come and say hello.

Laura Slater
Community Warden
Tel: 874043
Email: laura.slater@nationaltrust.org.uk



MISSING CAT

- Grey Moggy
- Male
- Neutered

Missing from Stansted.
Owners are deeply upset.

Please call anytime ~ **REWARD**
07881 558381 ~ 01279 812115 ~ 07760 162502

Mitchell School of Dance

Mrs Mitchell LISTD Dip AISTD AES Dip
Fully qualified and registered teacher

*Dancing Displays Examinations
Choreography National Competitions*

Classes at:

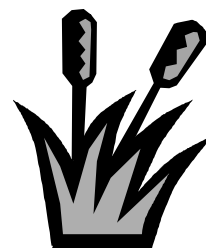
**St. John's Church Hall, Stansted
St. Mary's Church Hall, Birchanger**

Tel: 01992 812781



H₂O Plants Environmental Services

- ♦ Decking
- ♦ Fencing
- ♦ Irrigation
- ♦ Jet Washing
- ♦ Landscaping
- ♦ Tree Surgery
- ♦ Turfing
- ♦ Weed Control
- ♦ Lake, Pond & Water Features
- ♦ Grounds / Estate maintenance



*All staff are fully trained and insured
Over 30 yrs experience
Commercial & Domestic customers welcome*



Office: 01279 216 538
Mobile: 07958 304 744
www.h2oplants.co.uk



Selina Rankin Garden Design in partnership with **The Landscape Concept Ltd**

**A complete Garden Design and
Property Maintenance Service**

- Paving and Patios
- Land Clearance
- Hedge Trimming
- Plants and Planting
- Decking and Pergolas
- Lawn Care and Maintenance
- Tree and Shrub Pruning
- A full Garden Design Service
- Professional Project Management
- Fencing
- Turfing
- Border Care

For further information please contact:

Selina Rankin Tel: 01279 813388
info@srgardendesign.co.uk
Kevin Glogner Tel: 0750 668 9302
tlconcept@tiscali.co.uk



Registered Charity No. 1094702

**NFSH Accredited Clinic
for Spiritual Healing
(GMC Approved)
and other
Complementary Therapies**

**Quaker Meeting House
Chapel Hill, Stansted**

**Wednesday Evenings
7.30 - 9.30 pm**

**For appointments call
01799 550094**

www.saffronaccreditedclinic.co.uk

A&I Electrical

**All Electrical
Installations and
Repairs**

**New Fuse Boards
and Rewires**



Free estimates

Tel 07711 202423

Nick Shutes Painting and Decorating Ltd

**For high quality
interior and exterior redecoration
& associated minor repairs
contact Nick Shutes
for a no obligation quotation**

**01799 542385
07885 778213**

Based in Ugley

CHIROPODIST & PODIATRIST Stansted

and Bishop's Stortford

- ♦ Orthotics
- ♦ Diabetic Foot Care
- ♦ Evening & Saturday Clinics
- ♦ Routine Treatment

**R Handford & Colleagues
H.P.C. Registered**

**36 Lower Street, Stansted
Also at 16 Hockerill Street, Bishop's Stortford**

**01279 652249 info@feet.org.uk
www.feet.org.uk**

Stansted network

NEWS FROM YOUR LOCAL COUNCILS

ISSUES RAISED AT THE ANNUAL PARISH MEETING

At the meeting attended by about sixty people, parishioners raised a number of issues which are shown below, together with our immediate comments.

- **The parish website** is up and running but it is intended to become more comprehensive in coverage. If any organisation would like to be linked into the site, please contact the Clerk.
- **The need for a pedestrian crossing on Silver Street** was stressed. This requirement has already been raised with Essex County Highways but the precise location may only be determined once the decision is reached on the new health centre.
- **Concern over parking on pavements** again raised its head. The Council is in the process of convening a meeting with the police and Uttlesford parking attendants. It is hoped that clear guidelines will emerge and be published.
- **Requests for traffic calming on High Lane** were made to mitigate speeding. A scheme has already been drawn up by County Highways – now funding is awaited.
- **The dangers of the fountain junction** were emphasised by more than one person but possible solutions (roundabout or traffic lights) provoked disagreement. This issue is raised in the draft Parish Plan.
- **The proposed relocation of St Mary's School** to Foresthall Park generated some heat with one strong view opposing any move. Some form of further consultation is expected before long.
- **Criticism of the state of Bentfield Pond** was made. About a third of the pond is covered by bull rushes. The pond receives regular attention with professional help. Vegetation is tackled but, of course, returns.
- **The removal and heavy lopping of trees at Mont House** on High Lane was raised. Whilst the Council is very unhappy with the state of the property and the site, the

landowners are not in breach of any regulations.

- **The loss of a seat in 1998 at Burton End** was raised and a resident stressed that a seat with cast iron ends should be provided as a like-for-like replacement. Hopefully this may prove possible.

BULBS AND GRASS CUTTING

The daffodil display in many parts of the village has been uplifting after a long winter. The verges along by Blythwood Gardens have been especially worthy of comment, thanks to a legacy from a former Chairman of this Council, Rita Humphreys. Hopefully, more areas will look like this next year.

Advice has been received that, where bulbs were planted, grass cutting should be delayed until at least mid-June as early cutting risks many of the bulbs growing back blind next year. Please exercise understanding if the grass looks untidy in the near term – it will not be because of Council neglect.

THE 510 BUS SERVICE

Currently, this bus service enters the village from the airport and is scheduled to turn left from Church Road into Walson Way at the newly-opened mini roundabout. It then leaves Foresthall Park via Forest Hall Road. We have contacted Arriva to ask if prior to turning into the new development, the bus could continue down Church Road turning into Maitland Road, round the estate and back out via Mountfitchet Road, back up Church Road to Walson Way. This minor alteration to the route would serve many more people on this 24-hour service.

Arriva have replied to say that they constantly monitor their services for improved quality and that passenger demand plays a large part. Our request has been forwarded to the service delivery manager at Harlow Depot for consideration. If you agree that this would be a sensible addition to the route, please contact Arriva to let them know (customerservice@arriva-shires.com).

NEIGHBOURHOOD WATCH

The next Public Meeting for Neighbourhood Watch in Stansted is Wednesday 26 May at 7pm in Stansted Free Church Lecture Hall. We have invited Martin Ford to our meeting, he is the Community Safety Officer for Uttlesford and he will be pleased to answer any queries or problems that you may have regarding NhW in Stansted. The local police will also be represented.

Please come along and support your local Neighbourhood Watch team who are working with the Police to make Stansted a safer place in which to live.

Some of our on-going projects are well on the way to completion, some of them being the setting up of a NhW website, the replacing of old NhW signs, the installation of many new ones. Also Highways are in the process of placing six large reflective signs at the entrance roads to the village.

Contact: Cllr Valerie Trundle 813433
 Mrs Diane Roberts 813089

COMPOST GIVEAWAY DAY!

Uttlesford District Council has organised a "Compost Giveaway Day" at the Lower Street Car Park on Sunday 2 May. It will run from 9am – 3pm but operates strictly on a first-come, first-served basis, so will end when the compost has run out. Bring your own bags to take the compost away, and come early to avoid disappointment!

HIGHWAYS INFORMATION

We are compiling a list of items to raise with County Highways in the foreseeable future. This will cover general maintenance issues such as potholes, poor road surfaces, redundant or rusty poles and street signs. If you have any to add to our list, please let the Clerk know the street name and a location, ie outside house number, or opposite a...

REPORT FROM PCSO STUART STRANGER

Every month Stuart provides the Council with a report on his activities for the month. The report for March is due as we go to print, so what follows below is an extract from February:

"During the month I have continued to conduct foot patrols around the village focusing on the Mountfitchet Estate, skatepark and Hermitage House. I have also patrolled around the station area due to youths congregating outside the Indian takeaway.

"We have had problems at Hermitage House with youths gaining access to the underground car park. We have communicated with residents and the management company regarding improving security around the complex.

"The Neighbourhood Action Panel (NAP) which meets regularly has identified speeding as one of its priorities so I have completed speed checks on Cambridge Road. I have also looked around the village at different places to conduct the speed checks so the location may change after the next NAP meeting.

"I continue to receive calls from the public to the mobile phone which we carry (07801 461666) and it is good to know that the public feel they can call – the feedback we get is positive.

"I have also been patrolling on my pedal cycle – this enables me to cover a bigger area, but I try to split my duty time between cycling and walking. One of the main issues for the public at the moment is parking and we are working with the Parish Council to try and offer some guidance in this regard."

NEWS FROM UTTLESFORD D.C.

Cllr Alan Dean writes...

Good news on conservation areas which, I said last month, presently have little force behind them. I raised my concerns at the last council meeting. It has since been agreed to employ someone to complete the work that was started three years ago so that legal orders can be brought in. These will allow protection and even improvement to special features in the conservation areas that make much of Stansted a place of interest.

I met in April with representatives from Essex County Council to push for action to make Water Lane safer for pedestrians. I am waiting for feedback on what ECC will do and when. Action by the county council is more critical because I have discovered that Uttlesford and Essex failed or were unable to require the future developer of the former gasworks site to make up the road when the approved houses are built. The planning system sometimes seems negligent towards its responsibilities to the wider community.

Walson Way was opened through to Church Road at the end of March, finally bringing Foresthall Park closer to the rest of Stansted. The council is pressing the developers to open the children's play area in Hampton Road. Rerouting of the 510 bus along Walson Way is now being arranged. The rules say the change has to be advertised for 56 days before it comes in and so it is not likely to happen before July. I recently visited Foresthall Park with a council officer in an attempt to sort out the inadequate street signage. It's a bit of a muddle, to put it kindly!

By the time I write my next Link contribution we will have had a general election. Everyone seems to be promising more power for local people and local councils to get on with sorting out local needs without interference from on high. I will not be holding my breath!

Cllr Geoffrey Sell writes...

Stansted Airport Update

I attended recently a meeting of the Council's Stansted Airport Advisory Panel. Mr. Nick Barton, Commercial and Development Director of BAA was present to answer questions from councillors. As readers will know BAA won planning permission for full use of the existing runway estimated to be 35 million passengers per annum. The economic downturn has affected business at the airport quite significantly. The table below highlights the extent of the downturn.

The airport is very reliant upon one airline, namely Ryanair. On questioning Mr. Barton he said that it was to the order of 68% of passenger volume. The airline pays the airport

Year to...	Million passenger Per annum	Passenger Air Transport Move- ments
End March 2008	23.5	178,218
End March 2009	21.64	159,984
End February 2010	19.84	155,456

£100 million in landing fees per annum. Employment at the airport stands at approximately 10,800 down by about thousand from two years ago.

The Council recognizes the economic importance of the airport. The main area of contention is the second runway. All councillors are resolutely opposed to it. It was clear from Mr. Barton's comments that BAA remains committed to pursuing a second runway at Stansted. He accepted that realisation of their plans would be contingent upon the outcome of the next general election.

A new decision making structure?

The council is seeking residents views on introducing a new decision-making structure. Currently Uttlesford has a stream lined committee system. There are three policy-making committees. Most councillors serve on one of these, some myself included are members of two committees. Each committee has a Chairman who is elected each year. Most councils no longer operate the committee system but have an executive system either Leader and Cabinet or an Elected Mayor. Because of Uttlesford's size it was allowed by the government to keep the committee system.

The current administration wish to move towards a Leader and Cabinet decision making system. Decision making would therefore be concentrated in the hands of relatively few councillors. The Leader would have a Cabinet with perhaps five or six councillors having specific portfolios. The argument is that it would speed up decision making and that most councils now have such structures.

At the last full council I expressed reservations about this proposed change. Currently particularly in committees if one makes a good

case it is sometimes possible even if you are in a political minority to influence other councillors and thus have a real say in policy-making. This I believe is good for councillors and good for those who elect us.

If you have a view on whether Uttlesford should change its decision making structure you have until 31 May to do so. Responses should be sent to:

John Mitchell,
Chief Executive,
Uttlesford District Council,
Council Offices,
London Road, Saffron Walden,
Essex CB11 4ER.

Alternatively you can email your response to democratic@uttlesford.gov.uk
Further information is available on the councils web site.

Contact Details

Uttlesford District Council Members

<i>Alan Dean</i>	Tel: 01279 813579
Email: cllrdean@uttlesford.gov.uk	
<i>John Hudson</i>	Tel: 01279 814489
Email: cllrhudson@uttlesford.gov.uk	
<i>John Salmon</i>	Tel: 01279 814789
Email: cllrsalmon@uttlesford.gov.uk	
<i>Geoffrey Sell</i>	Tel: 01279 815925
Email: cllrseal@uttlesford.gov.uk	

Essex County Council Member

<i>Ray Gooding</i>	Tel: 01279 813103
Email: cllr.ray.gooding@essexcc.gov.uk	

Member of Parliament

The Rt Hon Sir Alan Haselhurst MP
House of Commons, London SW1A 0AA
Tel: 0207 219 5214/Fax: 0207 219 5600
Email: haselhursta@parliament.uk

Police

<i>PC Tom Bastendorff</i>	Tel: 01279 812211
Non-emergency number	0300 333 4444
<i>PCSO's (Stuart/Kelly)</i>	Tel: 07801 461 666

DATES OF COUNCIL MEETINGS

12 May	Full Council, then Annual Council Meeting (followed by Open Spaces FGP & Civil Protection to elect a Committee Chairman and V/Chairman)
19 May	Finance & General Purposes
26 May	Open Spaces

PARISH COUNCIL MEMBERS

Catherine Dean	813579
Iris Evans	815848
Jo Freeman	812524
Bridget Gott	814440
John Hudson	814489
Peter Jones	813252
Janice Loughlin	812346
Tudor Owen	812825
Ruth Rawlinson - <i>V/Chairman</i>	814222
Jonathan Rich	813112
John Salmon	814789
Dan Scott	815098
Geoffrey Sell - <i>Chairman</i>	815925
Bill Stiles	813172
Valerie Trundle	813433

CONTACT US!

Clerk - *Ruth Clifford*
Admin Assistant - *Anne Court*
Email: parishcouncil@stansted.net
Phone/fax: 01279 813214 10am - 1pm
www.stansted.net

This month, on the next page, we've also included the Live Case Report from Uttlesford's planning enforcement team.

[Planning Enforcement cases that have commenced](#)

ENF ID:	Planning Enf Ref	Date Rec'd:	Action by :	Parish:	Case Status:	Address of Allegation:	Suspected Allegation / Breach or Offence:
2126		01/10/2009	27/11/2009	Stansted	Under Investigation	The Nook Burton End	Steel containers and a possible office on site. Annexe used as dwelling
609	ENF/143/08/	25/07/2008	28/11/2008	Stansted	Under Investigation	Land at Bentfield Barns Pond Lane	Storage of portable site offices/toilets behind 2m high security fencing.
1651	ENF/117/09/	12/06/2009	16/06/2009	Stansted	Under Investigation	Foxglove Cottage Chapel Hill	Breach of condition C.90B on UTT/1436/08/FUL; breach of conditions C.6.7 and C.90A on UTT/1247/08/FUL; erection of a building to the front of dwelling.
2111	ENF/272/09/	08/10/2009	25/11/2009	Stansted	Under Investigation	10 Cambridge Road Stansted	Possible breach in connection with airport related
608	ENF/142/08/	25/07/2008	28/11/2008	Stansted	Case Closed – Planning Compliance Achieved	Land at rear of Pond Lane	'A' frame barn and land in front being used for storage of building materials.
1317	ENF/176/05/	27/07/2005	13/02/2009	Stansted	Under Investigation	Brickyard Plantation Elsenham Road	Roadways constructed, hardcore laid.
2519	ENF/38/10/B	10/03/2010	08/04/2011	Stansted	New Case - Waiting Investigation	The Garden House Bentfield Road	Outbuilding being converted to living accomodation
2163	ENF/281/09/	12/11/2009	04/12/2010	Stansted	Under Investigation	70 Bentfield Road	Free standing construction without any permission
2013	ENF/251/09/	28/09/2009	21/10/2010	Stansted	Under Investigation	40 Lower Street	Operating outside hours permitted by planning consents.
2012	ENF/249/09/	22/09/2009	20/10/2012	Stansted	Under Investigation	Land r/o 35 Cambridge Road (Cawkeell Close)	Brick building being erected which may need planning permission.
1012	ENF/257/08/	25/11/2008	08/12/2008	Stansted	Under Investigation	Park House Elsenham Road	Non-compliance with conditions, being used as a dwelling UTT/0793/07/FUL.
1853	ENF/196/09/	13/07/2009	19/08/2009	Stansted	Under Investigation	40 Lower Street	Illuminated advertisement displayed without express consent
1822	ENF/179/09/	01/06/2009	13/08/2009	Stansted	Under Investigation	Land adjacent to Ryders Burton End	Concrete rubble at side of property.
2356	ENF/14/10/B	15/02/2010	23/08/2010	Stansted	New Case - Waiting Investigation	Potash Cottage 15 Millfields	Extension approved under UTT/1128?83 with condition not to be used for separate accomodation.
1202	ENF/26/09/B	20/01/2009	23/03/2009	Stansted	New Case - Waiting Investigation	Land to rear of Rochford Close	Houses constructed larger than permission
1904	ENF/228/09/	24/08/2009	01/09/2009	Stansted	Under Investigation	8 Lower Street	Premises used as a fitness studio with advertising boards outside.
1900	ENF/225/09/	17/08/2009	01/09/2010	Stansted	New Case - Waiting	Endeavour House	New company trading out of Endeavour House Investigation called webuyanycar.com parking.

ACTION POINTS UNDER CONSIDERATION IN THE PARISH PLAN

A first draft of analysis and actions to form the Parish Plan is now being considered by the Parish Council. If you have any comments on these proposals please email the Council at parishcouncil@stansted.net, telephone or write to the Council or call a Councillor. By July the Plan should be close to its final form.

The action points are summarised below:

HIGHWAYS

B1383

- Install village entry treatments
- Signpost Airport/M11 traffic to A120
- Full pedestrian crossing by Croasdaile Road
- Reduce pavement/create parking bays
- Remove double yellow lines outside B & R
- Review fountain junction
- Full pedestrian crossing on Silver Street
- Consider a junction on M11 for Saffron Walden

Centre of village

- Stop commuter/fly parking
- More short term parking
- Consider 30 minutes free parking in car parks
- Install pedestrian refuge in Lower Street
- Review phasing of Grove Hill lights
- Traffic calming measures on High Lane
- Pedestrian refuges along Church Road
- Improve safety around railway bridge

Residential Roads

- Introduce 20mph zone on Mountfitchet Estate
- Introduce 20mph zone in Bentfield area
- Introduce 20mph zone on Hargrave Estate
- Extend 30mph to the west side of Bentfield Bower

Other Matters

- Negotiate with ECC to take over lights
- Consider keeping on lights at night
- Request residents to cut back plant growth
- Look for ways to help safe cycling

LOCAL ENVIRONMENT

- Protect green belt - keep parish separate
- Protect woodland/hedges
- Maintenance of twitchells - regular inspection
- Maintenance of footpaths - regular inspection

- Footpath from Foresthall Park to MMCC
- Repair Water Lane
- Renovate fountain area
- Screen recycling bins in Lower Street
- Planting in Crafton Green car park
- Planting in Lower Street car park
- Future maintenance of Churchyard
- Open up Stansted Park for recreation
- New booklet of local walks
- New flowerbeds/troughs etc over 3 years
- Remove verges on Mountfitchet Estate
- Consider verges on Foresthall Park
- Discuss condition of empty properties
- Review resources for litter collection
- Seek ways to reduce litter

CRIME AND SECURITY

- Publish local crime statistics quarterly
- Extend opening hours of youth club
- Consult over activities to involve the young
- Install a more effective CCTV system
- Argue case for additional local police
- Target police resources to problem areas
- Secure longer opening hours of police station
- Build and use Neighbourhood Watch
- Seek to reduce underage drinking
- Strengthen drink/drug education programmes
- More speed checks

LEISURE AND THE ARTS

- Redesign and re-equip play areas - seek funding
- Agree fund more opening times at Youth Centre
- Seek partners to run a Summer playscheme
- Consult on improvements to skatepark and better fencing
- Seek to acquire land for allotments
- Contact volunteers to run village events
- Test demand for new activities
- Create a feasibility study for a village hall
- Review use of Crafton Green site

SPORT

- Examine sites/funding for a swimming pool
- Contact landowners to secure land for junior football
- Negotiate to use Stansted Park as open space
- No major development without more open space
- Promote existing sports clubs
- Leisure Centre - seek ways to increase use
- Publish new footpath booklet
- Discuss other facilities with other authorities

COMMUNICATIONS

- Develop Braille and on-line versions inc. Link
- Maintain noticeboards and add (Foresthall)
- Improve layout of newsletter including on line
- Profile staff and councillors in newsletters/website
- Public meetings on specific issues
- Continue to improve website
- Find means to update regularly the website
- Email alerts for interested parishioners
- Promote Helpline
- Information available on facilities and services
- Create a Youth Centre noticeboard
- Section for youth interests on SMPC website

COUNCILS AND COUNCILLORS

- Eliminate duplicated provision of local services
- Provide a Community Information Centre (with UDC)
- Annual conference with local voluntary organisations
- Develop a comprehensive website for SMPC
- Redesign council pages in the Link
- Redraw parish boundary to bring in Foresthall Park
- Consider status - village or town?

HEALTH

- Continue to press PCT to provide a new Health Centre
- Improve appointment system - more advance booking
- Reduce high parking charges at hospitals
- Ensure good public transport for Health Centre

EDUCATION

- Initiate regular contact with local schools
- Discuss ways to involve students in the community

- Analyse future provision for secondary school pupils
- Lobby for provision of a sixth form at MMCC
- Continue discussions on use of St Mary's site
- Consult on range/timing for adult education

HOUSING

- Discuss scale of local need with UDC
- Discuss housing mix - small houses/bungalows
- Oppose development of more flats
- Seek sites for retirement housing

RETAILING AND SERVICES

- Seek ways to increase on-street short term parking
- Enforce parking restrictions
- Pedestrian access from Crafton Green to Cambridge Road
- Improve appearance in terms of street environment
- Upgrade CCTV for security in car parks
- Screen recycling containers in Lower Street car park
- Planting schemes to make car parks attractive
- Strengthen fencing around skatepark
- Consider schemes for Christmas decorations

EMPLOYMENT

- Provide a job vacancy board
- Use CIC to access Job Centre information

FUTURE DEVELOPMENT

- Oppose further large scale development
- Give strong support to retaining greenbelt
- Support limited small scale development
- Require development to fit in with surrounding area
- Consider creating more conservation areas

FUTURE OF STANSTED AIRPORT

- Oppose development of second runway
- Press for an adequate rail service

These ideas are still under debate and the timescale for achieving results will vary from quite soon to long term. Nevertheless it is important to have a vision of how this community should develop.

STANSTED IN BLOOM

The judging for this year's competition will be Saturday 3 July in the afternoon. We have chosen this date as your summer gardens should be at their best. During the month of June we will be looking out for our prize winning gardens, so now is the time to plan for this event.

If you would like to enter your own garden or that of a friend, you will find an entry form at the end of the Council pages in this month's Link. Please send your completed form to the Council Offices by Friday 25 June.

Subject to response, we hope to have a competition for the local businesses in Stansted, running alongside that for residential properties. We hope that residents and businesses alike will support 'Stansted in Bloom' this year and make our competition a real success.

Contacts:

Cllr Valerie Trundle 813433

Mrs Joy Thomas	813871
----------------	--------

Cllr Iris Evans	815848
-----------------	--------

***Stansted in Bloom 2010
Entry Nomination***

NAME OF PERSON NOMINATING

.....

CONTACT NUMBER

.....

ADDRESS OF PROPERTY TO BE INCLUDED IN JUDGES' TOUR OF THE VILLAGE

.....

.....

.....

Circle as appropriate:

Front garden

Rear garden

Hanging baskets

Tubs

Please return to Stansted Parish Council, Council Offices, 72 Chapel Hill **by Friday 25 June**

ROMANIAN ORPHANAGE VISIT IS A REAL EYE OPENER

Having hosted Nicoleta, an 11 year old Romanian orphan, for two weeks last summer and again at Christmas, we travelled to Romania at Easter to see for ourselves the conditions these children have to put up with on a daily basis. After arrival in Bucharest, we drove north-east for about two-and-a-half hours to our first stop at Nicoleta's orphanage in Dumbraveni. The building is a very ordinary family-sized home, with little inside other than the bare essentials. Nicoleta was clearly not expecting to see us, but after getting over her initial surprise, we spent a very happy 30 minutes being shown around and meeting her brother and three sisters. Other than one television, there seemed to be very little



for the children to do there, but at least they appeared to be adequately fed and clothed.

The following two days were spent visiting orphanages across Vrancea County. Many were little more than apartments with many children squeezed into small living areas. Paunesti was a very poor area, although the people at the orphanage there were determined that their English guests should be well looked after and put on a banquet-style lunch for us to enjoy. Little did we know that this was not all they had planned, and after some rapid clearing up, the floor was cleared to allow some traditional dancing with all the children and staff!

On Wednesday, we travelled to Valentii de Munte, where we were to spend the next three days. The orphanage there is much bigger than those in Vrancea, housing more than 100 children; however it seems much more structured, with toys, books and arts and crafts all available. Despite the language barrier, the children at Valenii quickly took to us, wanting us to participate in all their games, and making us feel very much at home. It was very moving when many of the children held onto us and asked if we could be their mum, dad, brother or sister.

On 24th July, more than 40 children will come to the UK for a two-week holiday organised by the Moreton Romanian Orphans Funds. Twenty have never been before and need families to stay with. Could you provide a home and a little love and attention? If so, then please contact Barbara Saunders on 01279 832001. Thank you.

Paul Jarvis



UGLEY WOMEN'S INSTITUTE

'A coach holiday with the RAF Regiment' was the title of a most interesting talk and film presentation given by Mr Colin Bale, a former member of the Regiment. The trip took place in 2008 and our members were entertained by expertly filmed views of, amongst others, the Minden music festival; and whilst on the subject of music, the presentation was accompanied by delightfully appropriate classical tunes from the pen of Schubert and his fellow countrymen. To return to the views, we saw Hamelin and the statue of its famous Pied Piper and a pied piper in human form in very colourful garb. Moving on to Berlin, there were views of the Berlin Wall which, as Mr Bale pointed out, was surprisingly narrow; a view of Checkpoint Charlie; Berlin Cathedral; and the famous Brandenburg Gate. Other views included the Holocaust Memorial; the Charlottenburg Palace; and the interior and exterior of the Kaiser Wilhelm Memorial church. And so passed another interesting afternoon for our members. Other subjects on the not too distant horizon include the history of the Docklands in June, a talk on antiques by Mr Tim Turner in September, and the history of finger printing in October. So we've a lot to look forward to in the coming months.

Andrea Fitt

MYSTERY SOLVED!

As reported in last month's 'Link', the winning postcard in the Stansted Evening WI's March competition was a photo postcard of a Chelsea Pensioner, W Adams. Donning her Sherlock Holmes hat, Marion Pretty has since discovered that Mr Adams was the last surviving veteran of the Punniar Campaign of 1843-45 and wears the Gwalior Star, and possibly the Sutlej Medal for the 1st Sikh War of 1845-46. According to information kindly provided by RQMS John Rochester of the Royal Hospital Chelsea, Adams became a Chelsea Pensioner on 1st April 1892 and was a former member of the 50th Regiment of Foot. He died on 25th October 1916 at the ripe old age of 93.



The Real Photo Postcard was sold as a souvenir at the Chelsea Flower Show on 20th May 1915, which probably explains how it came to be in Marion Pretty's grandmother's album. Alas, the handsomely bearded W Adams was not to be the famous ancestor that Marion had hoped for!

Marion Pretty
Yvonne Ayres

Graham School of Dance



Outstanding tuition in Royal Academy of Dance
Ballet & ISTD Modern Dance at the
QUAKER HALL, CHAPEL HILL, STANSTED
on Mondays, for children age 3+.

Classes in Tap, Drama and Musical Theatre for older children (+Adult Tap, Ballet and Street Jazz) held in Bishop's Stortford; classes also in Takeley & Sawbridgeworth.

Our talented pupils regularly win places with national dance schools and companies, gain excellent exam results and take part in dance festivals and professional pantomimes.

FOR FURTHER DETAILS & A FREE PROSPECTUS:

Telephone: **01279 654423**

Email: **info@grahamschoolofdance.co.uk**

www.grahamschoolofdance.co.uk

D C Poulton & Sons

Funeral Directors



High standards of service and attention to the public for over 100 years.

All branches have private chapels of rest.

Funeral can be arranged in all areas in the comfort of your own home if required.

Golden Leaves Pre-Paid Funeral Plans Available

Please note this company is not associated with any other with the similar name

2 Chapel Hill, Stansted 01279 813219
Clarks Lane, Epping 01992 572609
Chipping Ongar 01277 366009

Look after the skin you're in
with our alternatives to surgery...

**karen
dovaston-harris**

Specialising in **all** forms of Beauty
also air brush make-up and tanning



*Indulge yourself and relax in a tranquil
setting with complete privacy*



For information on treatments

Tel 01799 541888 **www.karendovastonharris.co.uk**

10% discount from your first treatment on production of this advert

MAYFAIR PONDS LTD



- Specialising in all types of ponds & features
- Professionally designed, installed, restored or maintained
- Local company established since 1987 with excellent after care service

Tel: 01279 461052
(Answerphone)

Mobile: 07711 087 004

DT Bedroom Design Ltd

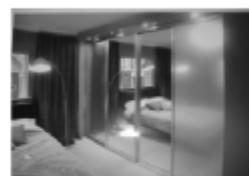
bedrooms • kitchens • studies • bathrooms



01279 657460 or 07765 257 200
Email: darryl.trigg@dtbedrooms.co.uk
www.dtbedrooms.co.uk



21



Competitive Prices
Free Site Visit
Free C.A.D. Design & Quote
New or Re-Vamps
Modern or Traditional
Over 200 Colour & Design Combinations

STANSTED MOUNTFITCHET U3A

We had our first AGM in March when the present Committee were re-elected unopposed with the exception of our Treasurer, Alan Bore. Alan had requested that someone with accounting experience take over so Alastair Richardson was nominated and elected with Alan being elected as Assistant Treasurer. How lovely to see so many of our members and also all the new faces that came to join us; in fact there was such a good turnout that we ran out of chairs – even the Committee had to stand! The formalities were followed by a performance of a selection of songs by our very own Stansted U3A singers. They sang a number of songs culminating in ‘I Dreamed a Dream’ from Les Miserables. This was a very moving and beautiful rendition, bringing tears to the eyes of one or two of the audience! We also had a variety of displays by our groups which have resulted in more people joining the different courses. A full list of these courses is on our website www.stanstedu3a.org or you can contact me and I will be happy to send copies out to anyone who does not have access to a computer.

During the month of February the Stansted U3A was one of the projects in ‘Community Matters’ run by Waitrose in Bishop’s Stortford and, as a result, they raised £315 for us. On behalf of our branch I would like to thank Waitrose and all the people that put their ‘little green tokens’ in our box. All monies will go towards the benefit of our members.

Our current activities include theatre trips, outings, art, book club, bridge, computer skills, French, gardening, genealogy, Italian, Spanish, knitting/crochet, photography, Pilates, Scrabble, singing, Tai Chi, a monthly lunch club

and the ever popular walking group. If you wish to know more please give me a ring and I will put you in touch with the relevant Leaders. New activities are always under review by our Co-Coordinator, Eileen Greer, so if you have an interest in something that we currently are not showing then please discuss it with her at the meeting as she will be happy to help.

Our forthcoming programme includes:

7th May Day out at Hatfield House Craft Fair

13th June Nature Walk with Wildlife Man - Tour of local nature reserve and picnic.

19th June Champagne Picnic Concert at Little Easton

23rd June ‘Sister Act’ - matinee performance of the musical at the London Palladium

16th July Newmarket Nights evening race meeting and concert with Simply Red

Our next meeting will be at 2.00pm in St John’s Church Hall on Thursday 20th May, when our Speaker will be Keith Baldwin. Keith’s talks include ‘When Policemen and Doctors start to look Young’ – rules on age and how to avoid the pitfalls; ‘Choose Your Words Carefully’ – a light hearted look at the art of Communication and how messages can become mixed or ‘All The Queen’s Horses and the Queen’s Men (and Women)’ – a range of stories about those who guard Her Majesty. We aim to have speakers who can bring a smile to your faces so why not find the time to come along, enjoy the speaker and see if you would like to become a member – you will be made most welcome. Please contact me if there is any further information you would like to know about our group.

Cherry Venn
Chair
Tel: 817140

Remember this?



The photograph, taken in 2004, shows a situation which has not recurred since. It is an example of how situations can develop when good maintenance is neglected. Keeping drains, gullies and gutters clear of rubbish and silt is a straightforward matter which many of us overlook when the skies are clear or the weather is cold. A salutary reminder.

Herts & Essex Window Doctor

Friendly Family Run Business



Repaired or replaced:

- ✓ Locks, Hinges & Handles
- ✓ Patio Doors
- ✓ Windows & Double Glazing

Call Nigel on 816324 or 07769 274610

Email: nijillpark@aol.com

No Call Out Charge

French Holiday Cottage

A real gem located in the heart of the Languedoc Cathar country between Carcassonne and Beziers

Sleeps 4 – 6

Please call for more details

Philippa 07967 655796 or Kevin 07707 995030

www.itsamaison.eu

Purrfect Cleaning Company

Established in 1990

Specialist in Carpet, Upholstery & Curtain Cleaning

Fabric & Carpet Protection, Leather Upholstery Cleaning

Curtain Cleaning Service

We remove & hang your curtains for you

Collection & Delivery Service

Fully insured

Tel: 01371 830753 or Mob: 07799 676078

www.purrfectcleaningcompany.co.uk

ETHICAL ELECTRICAL

Need a local, reliable friendly Electrician?

All Electrical work undertaken including:

Full and part re-wires, Maintenance and repairs,
Fuse board and earthing upgrades,
Electrical Inspection, testing and certification, PAT testing
Security lighting / Garden lighting, power and ponds,
Garden decking laid and lights installed.

Call Mark for a free estimate

07794159549 / 01279 814213



jason bagge architecture

ARB RIBA BSc BArch LLM

residential and commercial architecture

masterplanning, interior and landscape design
planning and building contracts consultancy

www.jasonbaggearchitecture.com

jasonb@jasonbaggearchitecture.com

T: 01279 813211 m: 07528 891716

Luxury Toilet Hire UK Ltd



Toilet trailers

Luxury and Party Range
single event portable and
disabled units available for
hire.

Visit www.luxurytoilethireltd.co.uk

or call 01279 504638

STANSTED MOUNTFITCHET SOCIAL CLUB

NEW MEMBERS WELCOME

Make new friends in a warm and relaxed atmosphere



- ◆ Children's Room
- ◆ Dropdown TV
- ◆ 3 Full Size Snooker Tables
- ◆ Darts and Pool
- ◆ Gaming Machines
- ◆ Jukebox & Live Entertainment
- ◆ Raffles and Bingo

DRINKS AT LOW PRICES

Why wait? Apply now!

Membership forms from the club in Lower Street

Tel 01279 812992

The Utility Warehouse Discount Club

**Would you like to save money on
all your household bills?**

Join the Club!

**Single bill for all your utilities
Award-winning customer service
Value that's unbeatable
Easy to switch**

For full details, contact:

John Richardson Authorised Distributor

01279 817102

www.smeutilities.co.uk

ADVICE FOR 'BACKYARD FARMERS'

As I mentioned last month I found myself standing in a back garden one afternoon watching piglets run as far away from me as possible (admittedly it could have been something to do with the syringe and very sharp needle I was holding), but it did confirm for me the growing trend of families keeping farm animals in their back gardens. Most families are content to keep a few chickens and this can be a wonderful experience for children and can teach them valuable lessons about caring for animals and where our food comes from. Other people are more adventurous and progress on to keeping a goat or two, or buying a few lambs or piglets to rear for slaughter. This may also be a wonderful experience and it can certainly teach the owners some interesting lessons. The main lesson from goat keeping must undoubtedly be that goats really do eat anything: grass, shrubs, hedges, door handles, washing on the line ... the washing line, you get the picture. Pig keeping can be great fun, and has become quite popular with the availability of miniature breeds such as the Kune Kune from New Zealand and the micro or teacup pig. However, it is worth knowing that if you keep pigs in your back garden, you will soon have no garden as rooting is a natural behaviour that pigs pursue for most of their waking time!

On a serious note, it is really important to research thoroughly before you even consider owning more unusual animals, and one vital fact to remember is that sheep, goats and pigs, whatever the breed, are farm animals. This means that they are subject to DEFRA (Department for Environment Food and Rural Affairs) regulations in exactly the same way as other farm animals. So in practice there are restrictions on where you can take them, (movement licences have to be applied for), what you can feed them, and also what happens to them in the case of outbreaks of infectious diseases such as Foot and Mouth. It is also important to be clear about why you want to keep pigs or sheep. Is it purely because you have an extra bit of land and want to keep them as pets until they grow old or do you want to raise a few pigs or lambs for slaughter and eat the meat? There are different considerations in each case which have different husbandry and veterinary implications. Some animals may need vaccinations and all farmyard pets will need worming.

The other really important consideration is to find a vet that deals with farm animals. Many vets these days only treat small animals as we have traditionally called them; this means cats, dogs and rabbits etc and has nothing to do with the actual size of the animal. Treating farm (or large) animals requires specialist knowledge and experience which not all vets have these days. I am happy to say that at Mercer and Hughes we treat all species of animals and are happy to give advice on husbandry and management of more unusual animals, but do think very carefully before you become a 'backyard farmer', particularly if you value your garden or your washing!

Ilse Pedler
Partner
Mercer and Hughes
Veterinary Surgeons



Nature Notes

If you are lucky enough to have long-tailed tits nesting in your garden, you will know that they build one of the most beautiful nests of any British bird. It is a domed structure made of moss, lichens and hair, felted together with cobweb and lined with up to two thousand feathers. The birds fly in and out through a small hole found towards the top of the nest. Its construction is a joint effort by the male and female birds and it takes them about three weeks altogether.

The search for a suitable nesting site begins in March. They often choose a prickly shrub such as berberis or a bramble hedge. Once the nest is completed, some time in April, 8-12 very small whitish, slightly speckled eggs are laid. The parents take turns sitting on them for just over two weeks. As it



is so cramped inside the nest, they have to fold their long tails (which are over half the birds' total length) over their heads. Once the eggs have hatched the fledglings will remain in the nest for another two weeks or so, being fed by their parents on insects and spiders. In the early part of May you should see the families of long-tailed tits flying about.

Later in the year they form flocks of 10-15 birds which often fly out of a hedge or small tree just ahead of you as you are walking along. When they roost at night, two birds will settle on a branch and then the rest of the flock will squeeze in between so that finally they are all packed tightly together with their long tails hanging down in a line. This helps to keep them warm

Rosina Kirkwood



Stansted Cricket Club

At the March AGM the team captains were elected:

Sat 1st XI	Ian Parsons (Vice-captain : Matt Abbotson)
Sat 2nd XI	Ben Sammons (Vice-captain : Dave Roach)
Sunday XI	Fred Kirby (Vice-captain : Ben Baker)

The home fixtures for May are:-

Sat 1	13:30 2nd XI v Stansted Hall III
Sat 8	13:30 1st XI v High Beach
Sun 9	14:30 Sun XI v Epping Forresters
Sat 15	13:30 2nd XI v Thundridge
Sun 16	14:30 Sun XI v Nazeing Common II
Sat 22	13:30 1st XI v Chesterfords
Sat 29	13:30 1st XI v Woodford Wells IV
Sun 30	14:30 Sun XI v Aspenden S&P

In addition we have been drawn at home to Birchanger in the 1st round of the HECL Cup. The match is due to be played on Tuesday 18th May at 6.00pm. Anyone wishing to join the club should contact David Hedge (adults) on 812509 or Keith Ayres (juniors) on 814471.

David Hedge

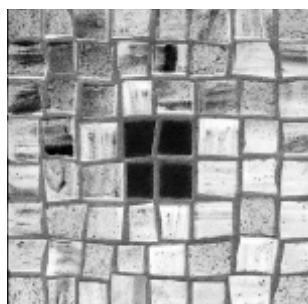
**J.D.W.
GAS HEATING SPECIALIST**

Boiler Servicing
Fast response to breakdowns
of Central Heating
& all gas appliances

Carbon Monoxide Testing
Boiler Replacements
General Plumbing
Cooker Installations

24 Hour Call Out
Gas Safe Registered
Ex. British Gas

Contact Julian
1 Church Hill Corner
Tel 01279 816083
or 07967 366585



A range of handmade mosaic
coasters, table mats and wall plaques.

Beautifully made with
hand cut glass set in a durable
charcoal grout. Designs can
be created to your own preference.



For more details please telephone
Jenny Kirby 01279 812293
To view gallery please visit
www.mosaics.carbonmade.com

Alzheimer's Society
Leading the
fight against
dementia

Uttlesford Branch

*Our Outreach Workers
are available to offer free
help, information and
support to people with
dementia, and their carers.
Several support groups are
held in various locations
around the Uttlesford area.
Home visits can be arranged.*

Please contact us at
UVCC, 46 High Street,
Dunmow CM6 1DY

Tel 01371 872519

email:
uttlesford@alzheimers.org.uk

Registered Charity No 296645

NEW LOOK

UPHOLSTERERS

Antique & Modern Furniture
Upholstery Specialists

Domestic / Commercial
Hotel & Contract Work
Full Repair Service

Wide range of fabrics
and accessories
French Polishing

Free quotes - Collection & Delivery
Professional Workmanship
Excellent Prices



01279 816222

info@newlookupholsterers.co.uk
www.newlookupholsterers.co.uk
34 Stoneyfield Drive, Stansted CM24 8PA

Commercial Architecture
Surveying
Project Management & Design



CDM Coordination to comply
with the
CDM 2007 Building Regulations.
Competitive fixed fees quoted
nationally.

Make sure your construction
project stays within the law.
Call us now to discuss all
Health & Safety matters for
your commercial or retail needs.

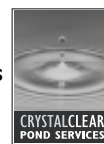
Call Keith Phillips on
01279 815651 or 07967 822134
www.ampersand-associates.com

Crystal Clear
Pond Services
Pond Cleaning &
Maintenance

*Regular cleaning, maintenance
and servicing **plus** supplying
and fitting all pond equipment*

- Pond Cleaning
- Pond Restoration
- Water Features
- Pond Supplies

For a clean and healthy
pond all year round.
Free estimates & quotes



01279 812011
07999 536580

www.crystalclearponds.co.uk
info@crystalclearponds.co.uk

Savill Brickwork

Family business
35 years experience
All brickwork undertaken

- ♦ New Build
- ♦ Renovations
- ♦ Extensions
- ♦ Commercial
- ♦ Garden Walls
- ♦ Re-pointing

Competitive prices

Tel: 01799 543348
Mob: 07788 865986

MELODY BEAR....

DANCE
CLASSES
FOR
PRE-SCHOOL
CHILDREN



*Fun classes introduce
children age 2 - 4 years to*
dance & movement
*using the natural actions of
the body such as running,
jumping, skipping & galloping*
– run by qualified teachers.

Classes in Stansted &
Bishop's Stortford
Please contact us for details
and a free prospectus:

01279 654423
info@grahamschoolofdance.co.uk
www.grahamschoolofdance.co.uk

CHRIS OSBORN
BRICKWORK &
GROUNDWORKS



Extensions & Conservatories
Property Improvements &
Structural Changes
Garden Walls & Patios
Flint Work & Traditional Lime
Mortars

T: 01279 850703
M: 07515 284238

EMAIL :
chris_m_osborn@yahoo.co.uk

St Mary's C E Foundation Primary School



Learning together we care, share and prepare



The spring term has been very focused and hardworking, but we have still had time for plenty of sport! It has been a successful term for sport at St Mary's. We have had our intra-house tag rugby and netball tournaments, with trophies awarded to the winning houses. This year Forsters won the tag rugby, Vikings the netball. Both the football and netball teams achieved some good results against local schools and we were delighted when the netball team became the Uttlesford South champions. We owe thanks to Ruth Doyle, who coaches the team with the support of Vicki Brice and Claire Jonas. While netball is played by mixed teams of girls and boys, for football there are separate teams. The girls' team were group winners and third overall in a recent tournament held at Newport Free Grammar School. Still on the theme of sport, the School Council organised a non-uniform 'Wear Something Red' day in aid of Sport Relief, with various sports-themed fun activities going on in the different classes. Next term the focus will be on tennis, cricket, rounders and athletics, with after school clubs taking place in all of these sports as well as in dance and fencing.

If you are new to the area and would like to have a look at our school, please give us a ring on 812212 to arrange a visit.

Christine Tonkins
Headteacher

Stansted Tennis Club



Court resurfacing

We are delighted to report that work on resurfacing the courts finally started on Tuesday 6th April. We are not certain of the completion date but will keep members informed by email and posters inside and outside the clubhouse.

Dates for your diary

Members with email addresses will be circulated with tournament details. Please also keep an eye open for posters and entry forms in the clubhouse.

Sunday 25th April - Adult/Child Tournament - Unfortunately this tournament had to be postponed due to court resurfacing. A new date will be announced later in the year.

Sunday 9th May - Cayless Chilli Tournament - 12.30pm start. Hopefully this tournament will take place as advertised.

Monday 10th May - Ladies' Night - starts at 6.30pm. This will be the first of these sessions as the April one had to be cancelled due to court resurfacing. All lady members are welcome to attend. Non-members are also welcome, but will need to pay a visitor's fee of £2 (after three sessions as a visitor you will need to become a member).

Sunday 16th May - Clower Boys' Doubles Tournament (under 16 age group) - 12.45pm start.

Saturday 22nd May - President's Cup - 4.30pm start. Fish and chip supper included in cost of entry.

Club Tournament

If you would like to enter this year's tournament, please add your name to the entry lists on the club notice board. The lists will be up for the whole of May.

Hospital Cup Competition

The draws for this should be on the notice board by the beginning of May. If you have entered, please look at these early on in order to arrange your first match.

Coaching

The Friday lunchtime adult coaching session starts at 1.45pm and finishes at 2.45pm. If you would like to come along and join in, please call Chris Hollis on 319155 (please do not just turn up). You don't have to be a member of the Club to join in. Chris is currently collecting names of Year 2 and 3 children who are interested in starting tennis lessons. If there is enough interest, hopefully a new group will be established in the near future. There are several after-school coaching groups for various ages during the week. If you would like to find out more details, please give Chris a call. There are spaces available for the following sessions:

Mondays 4.30pm-5.45pm - Girls' match practice - age group, 1996-1998 dates of birth.

Tuesdays 4.30pm-5.45pm - Boys' match practice - age group, 1996-1999 dates of birth

Martyn Taplin (816386) is planning to change his adult coaching slot from a Saturday afternoon to a Monday evening. When this change will take place depends on when the courts have been resurfaced. Please phone Martyn should you wish to join in or if you want the latest update.

Used tennis balls

About 100 balls (varying standards) have recently been returned from our neighbours. These can be purchased for £1 per tube of four - choose your own! Owners of dogs who enjoy chasing balls may also wish to take up this reasonable offer. Please contact Jan Hollis on 812073 or call at 105 Cambridge Road.

Club Playing Sessions

Members are encouraged to attend these open sessions:

Wednesdays at 10.00am and 6.00pm.

Fridays at 9.30am. Sundays at 10.00am.

Contacts

For further information, please contact Richard Mott (Secretary) on 466348, Janet Hollis (Chairman) on 812073 or Daphne Lunnon (Membership Secretary) on 817574.

Chris Hollis

THE SECRET GARDENER

www.thesecretgardener.net



- ✓ GARDEN DESIGN
- ✓ CONSTRUCTION
- ✓ MAINTENANCE

Friendly service ~ No job too large or small

Call Scott on 07968 121016 for a free consultation

References available - fully insured

HIBBS WALSH

associates ARCHITECTURE & DESIGN

'Restoring the past and building for the future'

Architect: **M.A.HIBBS** BSoc Sci, BSc, Dip Arch, ARB

Partner: **S.M.WALSH** LSIAD, BSc (Hons) Arch

82 High Street Saffron Walden Essex CB10 1EE

Tel 01799 523660 Fax 01799 509940

Email: office@hibbsandwalsh.co.uk

Website: www.hibbsandwalsh.co.uk



Massage Therapist

Jenna Perkins

Swedish Massage

Gift Vouchers Available



Please call Stansted 07881 558381

jennaperkins@hotmail.co.uk

HIGH HOUSE Montessori Day Nursery

- Accepts children from 3 months to 5 years
- Small class ratios, with qualified staff
incl qualified Early Years teacher Vanessa Callan Bsc Hons, PGCE
- Beautiful farmland surroundings
- Traditional values and structure
- Full day care available 8 am to 6 pm

To arrange a visit please call: **01279 870898**

www.HighHouseNursery.co.uk

LAN ONE COMPUTERS



Unit 2 Rear Of
16 Cambridge Road
Stansted
Essex CM24 8BZ

Phone 01279 816116

Email: info@lanone.co.uk

Your Local Computer Accessory & Repair Shop

GILLSON CARPENTRY & JOINERY



- First & second fix carpentry
- Site & bench joinery
- Extensions & building projects
- Kitchens
- Wooden flooring
- Decking design & construction
- No job too big or too small

Office 01279 812101

Mobile 07525 061661

Email: gillsoncarpentry@btinternet.com

A BETTER AERIAL



DIGITAL AERIALS

FM/DAB AERIALS

SKY TV REPAIRS

FREE ESTIMATES

WWW.ABETTERAERIAL.CO.UK



Working Towards Business Integrity

TEL: **0800 0437251**

MOBILE: **0798 0817251**



Sole
Trader
EST. 20 Years

STANSTED CARPETS

CHAPEL HILL

EST. 1969

CARPETS ~ VINYL FLOORING ~ CURTAINS

CURTAIN FABRICS

ROLLER ~ VERTICAL ~ VENETIAN BLINDS

FREE ESTIMATES ~ PROMPT SERVICE

Call Peter on 01279-812019

E-mail: stanstedcarpets@hotmail.com

www.stanstedcarpets.com

CARPET CLEANER HIRE

C. C. VALETING LTD

**THE ULTIMATE IN
CAR & COMMERCIAL VALETING**



From Washes to Full Valets

Office 01279 815192 Mobile 07974 005642

www.ccvaleting.com

STEVE KING

STANSTED GAS SERVICES

07956 855328 01279 817581

Servicing, Breakdown and Repair to
Gas Central Heating and appliances.

Installation of Bathrooms and Showers

Gas Safe Registered. Ex - British Gas

Bareham Overy Partnership

RIBA Chartered Architects

Turn ideas into reality

- Residential
- Industrial
- Interior Design
- Project Management
- Planning & Building Regulation Applications
- Leisure
- Commercial
- Space Planning



01279 816040 john@barehamovery.co.uk

The Forge, Stansted CM24 8UE



Stansted Evening Women's Institute

We welcomed Caroline Bore to our March meeting to tell us of her work fundraising for St Clare Hospice Trust, established in Essex 20 years ago. The original movement was founded in 1920 by Dame Cecily Saunders, who, through her work as a nurse and later a doctor, saw the need for a place to give patients a dignified end. That began with a legacy of £500 and the first donation presented to St Clare's was £5,000 raised by Essex Radio listeners. There are eight beds in the Specialist Care Unit and it is hoped to increase this number. It also provides free equipment loan and a 24/7 Helpline for family support services. Caroline has worked for the organisation for 10 years by organising fêtes, coffee mornings, jumble sales and a lottery programme. It is obvious that she thoroughly enjoys and is dedicated to her work.

Several members attended our 93rd County Annual Meeting at The Brentwood Centre, where we joined over 1,500 other Essex WI members. You can imagine the noise that we were met with as we entered to find a seat. The platform was beautifully decorated with daffodils and polyanthus sent over from the Channel Islands as a tribute to our retiring Chairman Julie Alen. She has devoted the last four years to this and has enjoyed all of it, particularly presiding over our so many 90th anniversaries, and also attending a Buckingham Palace garden party. Our new National Chair (they prefer 'Chair' to Chairwoman) is Ruth Bond from Barton, Cambridge; she has been a journalist, a stage designer, a lay preacher and a WI member since 1976. She is keen to widen membership and hinted at the possibilities of opening a WI for women MPs and WIs for women prisoners – perhaps they could take over the cooking or even make jam? She emphasises that people in power do listen to the views of women in the WI.

This leads on nicely to the main speaker of the day, Ann Widdecombe; she may be small in stature but what a personality! She will be retiring from Parliament, after more than 20 years, and hopes to spend more time writing her novels and, of course, speaking. She has some good tips for public speaking – 'waffle with authority if you don't know the answer' being one. She says when you are blonde men talk to you much more slowly – not sure why – is it because they think you are dumb or they want to be with you longer? She has served in the Cabinet notably with prisons and immigration. She enjoys her television programmes but has refused the temptation to do 'Strictly Come Dancing' – how wise. She has been asked 'how you can be an MP and a Christian?' and answered we need more Christians in Parliament! She is proud of her collection of cartoons that have been drawn of her over the years.

Our jumble sale was very successful and we thank all those who supported us; the providers of lots of lovely jumble, the customers, and the helpers. Our Speaker on 13th May is Judy Jeffrey with 'Looking Good, Feeling Good'. We meet in St John's Hall at 7.45pm on 13th May. Come along – it might do you good!



Judy Colliver
and
Brenda Ryan
Tel: 812725

THE GRANTA CHORALE

www.grantachorale.org.uk

'Of Heaven and Earth' - Saturday 1st May at 7.30pm at St Mary's Church, Saffron Walden, tickets £8 (children £2) from Saffron Walden Tourist Information Centre, Granta Chorale Tickets Tel: 01799 524816, or at the door.

The Granta Chorale, comprising 20-24 singers, was formed by Janet Wheeler in Autumn 2007. The choir performs a wide range of music from the Renaissance to the present day and has already achieved an enviable reputation as a result of its performances in local churches - Newport, Great Chesterford, Fulbourn, Chrishall and Bishop's Stortford. 'Of Heaven and Earth' will be the Chorale's first concert in Saffron Walden and the choir, together with their guest Jonathan Lilley, organist at Ely Cathedral, look forward to filling the acoustics of this magnificent church with a varied and interesting programme of secular and sacred music. The programme includes two wonderful Bach motets, 'Lobet den Herrn' and 'Jesu meine Freude'; 'Faire is the Heaven', a double choir motet by William Harris, three works by Janet Wheeler, a second performance of 'Time becomes a Song', a first performance of 'The Joy as it Flies,' and 'Alleluia, I heard a Voice'.

In 2009 Janet Wheeler was commissioned to write a cycle of John Clare settings to celebrate the life and work of the 17th century poet who wrote with great insight of his local countryside, his unrequited love and the injustices of the day. The Granta Chorale gave the first performance of 'Time becomes a Song' in a celebratory concert for the John Clare Trust at Glington in Northamptonshire, close to the poet's birthplace and are delighted to include this new work in their St Mary's programme. 'The Joy as it Flies', originally planned as a cycle of epitaph settings, broadens to include poems and texts in a similar vein. The themes of the sun, life, death and eternity weave in and out through the work. The title comes from the final piece - 'Eternity's Sunrise' by William Blake. There is more heavenly music with 'Lux Aurumque' by the highly regarded American composer Eric Whitacre and Verdi's 'Laudi alla vergine Maria' while 'A Summer Garland', composed in 2002 by Alan Bullard, celebrates the English countryside in a light-hearted choral suite most appropriate for May Day.

Sue Sylvester-Bradley
Choir Administrator
Tel: 01440 783157

COMPOST GIVEAWAY DAY

This is run by Uttlesford District Council, and free compost is available to residents.

Sunday 2nd May at Lower Street Car Park

The site will run from 9.00am until 3.00pm or until supplies run out. It will operate on a 'first come, first served' basis and residents will need to bring their own bags to take the compost away.



GET THE MOST OUT OF LIFE Hypnotherapy

& other brief therapies

- One session smoking therapy plus support
- Weight & Eating

also

Confidence ~ Exams
Stress ~ Anxiety
Depression ~ Insomnia
Phobias
Irritable Bowel Syndrome
Relationships
and much more

Glynis Cheers

MA, CIPD, DPM, BSCH,
Diploma Clinical Hypnosis

01279 812165

threecheers@btinternet.com

ada

Reliable Painting and Decorating Services

Andrew Richardson

Tel: 01279 817282

Mob: 07980 439924

- 20 years experience
- References available
- Fully qualified
- Competitive rates

*Customer satisfaction
guaranteed*



RAINBOW
PRE-SCHOOL

St John's Road,
Stansted,
CM24 8JP

www.rainbowpreschool.net

**Welcome Children
Aged 2½ to rising 5's**

Mornings 9.15am to 12noon
Afternoons 1.00pm to 3.30pm

Experienced Friendly Staff

'a calm and well organised learning
environment' (OFSTED Jan 08)

For further information, please
call 07966 506997 or contact
Gill Pursglove on 01279 814701

Phoenix Trading publish a fantastic range of
greetings cards • posters
notecards • gift wrap
& other high quality accessories at
excellent prices



Please contact me for a
catalogue or to arrange a
card party. Or why not go
a step further and become
a Phoenix Trader - you
too can earn a worthwhile
income by selling these
great products!
Ask me for details.

Sally Macmillan

01279 813267

andyandsally@mac.com

www.phoenixtrading.com

Independent Phoenix Trader 8045

Stansted Psychotherapy

Counselling Psychotherapy Life Coaching

Resolve your issues
Create a better future
Start whenever you're ready

Sian Lloyd MBA Dip.NLPt
NLPtCA Accredited
UKCP Reg. Psychotherapist

Contact: 01279 817976
sian@stanstedpsychotherapy.com

Nouvelle Carpentry & Building

Fully qualified local carpenter
with over 25 years experience

- ♦ Extensions
- ♦ Kitchens
- ♦ Doors & Locks
- ♦ Windows
- ♦ Bespoke joinery
- ♦ Summer Houses
- ♦ Decking
- ♦ Soundproofing

Fully Insured and
Guaranteed

Nick Whitaker

Tel: 01279 813690
Mob: 07973 330731
nouvelleinteriors@live.co.uk
Blythwood Gardens Stansted

HEARING HELP UTTLESFORD

FREE HELP

for problems with
NHS Hearing Aids
at

Stansted Day Centre
2 - 4 pm

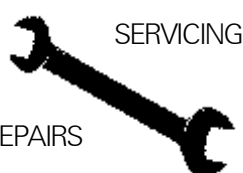
on the last Tuesday
of every month

For more information ring
01799 599790
(9 am - 5 pm)

Registered Charity No. 289280

AUTOMOBILE ENGINEERS

*David
Nunn's
Garage*



REPAIRS

SERVICING

Bentfield Road Stansted
TEL: **01279 812686**

**LINO
THOMAS
HAIRDRESSERS**

THE GREENS BUILDING
CAMBRIDGE ROAD, STANSTED
ESSEX CM24 8BZ
TELEPHONE 01279 812910



494 Stansted Airport) Squadron Air Training Corps

With the coming Falklands competition, training has started. To 494 Squadron this annual event is probably the most important competition for our cadets. It consists of a weekend at Carver Barracks, against about 28 teams from other Essex Squadrons. The elements are a navigational exercise, first aid, shooting, archery, bearings, camp craft to name a few. In the past two years Stansted Airport Squadron has come third, and so went through to the next round against the Army and Sea Cadets. This year we hope to make it a hat trick and get through to the next round again. We have spent a couple of weekends up at Carver Barracks training for the event. Sleeping in tents on a windy airfield at temperatures of minus 8 is certainly fairly gruelling. However, as the competition approaches we do what we must! In addition to our cadets activities we have been bag packing in Sainsbury's for Sport Relief.

At Easter another Sergeant and I went up to the Peak District



for our Silver Duke of Edinburgh expedition. The weather started off raining and cold; however by the end of the three days walking it had finally stopped. The tops of the hills were snow covered, and although it was bitterly cold, the views were absolutely stunning. We learned to enjoy the changing English

weather and I had a great time and made some good friends from other Essex Squadrons. We had an Inter-Flight competition organised by Cadet Sergeant Charlie Douglass. The Squadron is split into 3 Flights; 'A' and 'B' which are cadets of all ages and abilities and 'C' which is the Training Flight. The competition between Flights is ongoing throughout the year. The night included initiative exercises, obstacle courses, first aid and a uniform inspection. By the end of the night 'A' won by a mere four points; a very close match. However we will have to wait until the end of the year to see which Flight wins ...

We have had numerous opportunities recently for cadets to go flying and gliding. This is great as it gives you an opportunity to do something you would never get a chance to otherwise! We are looking for new recruits for our next intake on 24th May so why not come along and see what we do? If you are aged between 13 and 16 and interested in joining us, contact us for more information; telephone 01279 681559 / 661929 Mondays and Fridays 7.15pm-9.30pm (24 hour answerphone) or email 494@aircadets.org.

Cadet Sergeant Alice Brooks
494 Squadron ATC

VOLUNTARY & RECREATIONAL PROFILES

No 8 Rotary Club of Stansted Stort Valley

Who are we?

Part of Rotary International (founded in 1905) – Stansted Stort Valley (SSV) was established in 1981 as the local Bishop's Stortford, Stansted and Thorley, evening Rotary Club. We meet in Bishop's Stortford on Tuesday evenings. Rotary International is an organisation which aims to serve local communities around the world and to improve the lives of people where it can. Individual clubs are made up of local men and women who wish to 'give something back' and who enjoy the company of like-minded individuals.

How do we achieve that?

We raise funds locally in the following ways:
Organising an annual Business dinner – usually with a well-known sportsman as speaker. At Christmas we take Santa on his sleigh around the streets of Stansted and Thorley to delight the children (and collect cash!). Holding other smaller events during the year.

Who do we help?

Deserving causes; for example we have recently supported:-

Locally

Grove Cottage – a fantastic day centre for the disabled and their carers from the local area
Essex and Hertfordshire Air Ambulance Services
Riding for Disabled, youth sports clubs, local Fun Run, Cantate etc.

Nationally

Macmillan Nurses, cancer charities, and very recently, flood victims in Cumbria

Internationally

Polio eradication (led by Rotary), specific support to international disaster relief situations (eg the Tsunami disasters)

We have fun!

An active programme of social events includes regular Sunday lunches, theatre trips, and we have recently been to the Tower of London to watch the Ceremony of the Keys.

Interested?

In short, Rotary enables us to put something back into society whilst enjoying good fellowship, and having fun. If you are interested in joining us, or finding out more about Rotary then please contact me, or for more general information on Rotary in Great Britain please visit www.ribi.org. There is a second Rotary Club in Bishop's Stortford which meets on Monday lunchtime.

Malcolm Lloyd
Membership Chairman
Tel. 812235

Email: malcolmjudy_lloyd@btinternet.com



Baby Massage Courses

Mondays and Fridays in Stansted

Small friendly classes offering the opportunity to meet other parents and learn special relaxing massage techniques to enjoy with your baby.

Easing ailments such as baby's colic and constipation are among the many benefits.

For further information please contact:

Monday Class
JAN RICKWOOD
01279 850727



Friday Class
SUE MOLONEY
01279 771405

**DRIVING
LESSONS**

FIRST
4[£]60

KEEP IT SIMPLE

KISS

Learn to drive fast, have fun, save money!

**BLOCK BOOKINGS
INTENSIVE COURSES**

Tony 07785 571 225

0845 245 0405

kissdrive.co.uk

HIRE THE NEWLY REFURBISHED

Ugley Village Hall

With two halls, ample parking, facilities for the disabled and competitive rates, the refurbished Ugley Village Hall on Cambridge Road is ideal for clubs, classes, functions, children's parties and social meetings.

Bookings or further information please call Susan Bone 01279 814052

Kate Harrison

**CURTAINS, PELMETS, BLINDS,
CUSHIONS of all SORTS, BED COVERS,
VALANCES - ALL MADE TO MEASURE**

I can supply fabrics, trimmings, tracks & other accessories.
Please call for my free advice and measuring service.

Tel / Fax 01279 777452

email: kateharrison_1@yahoo.co.uk

JP Tiling

Wall and Floor Tiler

**All types of tiling undertaken including:
Ceramic, Porcelain, Natural Stone,
Under floor Heating.**

Bathrooms, Wet rooms, Kitchens

Contact Jon Pichel 01279 815117 / 07846 760393
Email: jon.pichel@btinternet.com

**Battery
Distributors**



Any Battery Any Purpose Any Where
Service & Repair of Power Tools

Tel 01279 815582

email: sales@zelta.co.uk
www.batterycharged.co.uk

**CHOCOLATES FOR
HOCOHOLICS**

Christmas	Fundraising	Gluten Free
Halloween	Birthdays	Diabetic
Weddings	Corporate / Gifts	Nut Free
Valentines	Mother's Day	Easter

Nikki Westwood 01279 771867

Email thechocolatelady@tiscali.co.uk
www.chocolate-parties.com

**STEVE HALL
GARDEN SERVICES**

CALL FOR HELP IN YOUR GARDEN

Tel 01279 817739

Mobile 07778 049063

Fancy Fingers

Nail and Beauty Studio

10%off

your first treatment with this advert

Visit us on
www.fancyfingers.co.uk



52a Silver Street, Stansted CM24 8HD
Tel 01279 647646

N W Brown Landscapes

All aspects of landscaping
undertaken including fencing,
decking, paving, lawns & planting

Nigel Brown
07917 611945
01279 507255

RHS Qualified
Registered waste carrier

National Childbirth Trust - Stansted Branch

I hope you all had a great Easter and are looking forward to the spring and summer months ahead. We are currently in the process of planning some fabulous events in the next few months (some listed below) and we hope you will be able to join us. After two and a half years Donna Butler, our Chair, has stepped down. We would like to thank Donna for all her hard work and hours upon hours of time she has put into our branch to make it one of the most successful branches in our area. She will be missed and we wish her and her family all the best for the future. If you are interested in becoming our new Chair or just would like to find out more about volunteering to help, or for more information about the NCT please contact us on the number below.

Tea & Toys - Henham Church Hall, 7th May
10.00am-11.30am. Cost £2 per family. Contact Bridget on 850986

Bowling Night Bishops Stortford Bowling, 7th May
8.00pm. Usual bowling fee. Contact Kim on 815420

Tea & Toys with Osbourne Books St Johns Church Hall,
4th June 10.00am-11.30am. £2 per family. Contact Bridget on 850986

Kim Taylor
Publicity Officer
Tel: 08442 436281



STANSTED BOWLING CLUB

With the advent of spring (at last) full preparations are being finalised for the new season. A grateful thanks to all the members who turned out in mid-April to help prepare the Clubhouse, ground and surrounding gardens; it is a tribute to our members and shows how much they care for the Club, once again thank you. Our first match for this new season is an inter house tournament, The President's Team v The Captain's Team, and this will be followed by regular league and friendly games throughout the season against other local clubs. One of the more popular fixtures is the 'Seniors League'. These games take place at home and away, usually on Tuesdays, and are not only very competitive, but a very enjoyable afternoon sport and an opportunity to meet both old and new acquaintances. There are inter-club competitions throughout the year and on virtually every Friday evening. All are great fun and well attended.

If you have not bowled before and would like to try your hand, we would be delighted to meet you. Stansted Bowling Club is situated in the heart of the village, just off Chapel Hill; we welcome warmly new members (both ladies and gentlemen) who would like to learn to bowl. If you missed our new bowlers' session on 1st May, do please contact our Club Captains or me, when we will be delighted to arrange a meeting with you. You can of course join as a social member and use the club facilities, including the club bar. As a new bowler we will give you every help and encouragement from

the very first moment you begin. After a few short coaching sessions you'll be playing in friendly club matches, we believe in making everyone welcome whatever their ability. If you have previously played before and would like to join a friendly forward looking club, please do contact us and be assured that you will be made very, very welcome. We look forward to the new season with eager anticipation and hope to see new members at the club in the very near future.

For more information please contact me or the Men's Captain Del Sharp 816144, del.mon@btinternet.com; or the Ladies Captain Margaret Hill 814359, mchill47@btinternet.com. We look forward to seeing you.

Edward Taub
Hon Secretary
Tel: 816932
ebtaub@googlemail.com



Summer Proms

7.30pm Saturday 12th June, St Mary's, Saffron Walden

7.30pm Saturday 19th June St John's Church, Stansted

Saffron Walden Choral Society is delighted to welcome back Crispian Steele-Perkins to share the platform for this season's Summer Prom concerts at Saffron Walden and Stansted. The lively programme has an American theme for the first part, with jazz-inflected compositions for choir and trumpet. Bob Chilcott's Little Jazz Mass and music by Gershwin will feature alongside arrangements of well-loved jazz standards. After the interval a selection of British songs with a grand Prom-style finale gives plenty of opportunity to join in the choruses and wave a Union Jack. Janet Wheeler conducts, with Richard Carr on organ and keyboard. Tickets: (Saffron Walden) are £15 (concessions £12, accompanied under 18s £1) from Saffron Walden Tourist Information Centre, SWCS Ticket Secretary on 812849, www.wegotickets.com and at the door.

Tickets for the Stansted concert are £10, accompanied under 18s £1 from Stansted Carpets 812019; St John's Church Office, 815243 or Sarah Ludlow-Elston 814376.

Liz Jennings
SWCS Press Officer
Tel: 07720 567922
pressofficer@swchoral.org.uk

UGLEY FARMERS' MARKET

(Every 3rd Saturday of the month)

Saturday 15th May

Ugley Village Hall

10.00am-12 noon

A wide variety of stalls: meat, fruit and veg, pickles and chutneys, honey and jam, eggs, baking, bread. Also crafts and cards.

Refreshments

Easy parking

Lower Street Clinic
36 LOWER STREET, STANSTED, ESSEX
 ESTABLISHED 1989

Osteopathy, Cranial Osteopathy
Aromatherapy, Homeopathy
Chiropody/Podiatry
Infant Massage Instruction
Pilates Instruction

We have a specialist clinic for
 pregnant mothers, infants and children.

**FOR FURTHER INFORMATION OR
 TO MAKE AN APPOINTMENT, PLEASE TELEPHONE**
01279 815907

Pothecary Witham Weld | **PWW**
 solicitors

For Professional Advice You Can Trust
 Call us: 01279 506421
 Email: info@pwwsolicitors.co.uk
 or visit www.pwwsolicitors.co.uk

White Horse Court, North Street
 Bishop's Stortford, Hertfordshire CM23 2LD

Clients' parking and Disabled Access

Also in the City of Westminster

Wills, Probate & Trusts - Commercial & Residential Conveyancing
 Charities and Ecclesiastical Law - Corporate & Commercial Matters
 Dispute Resolution - Landlord & Tenant - Notarial Services

Members of the Lawyers Christian Fellowship

Pest Control & Prevention
H₂O Plants Environmental Services



- ✓ Ants, Bed Bugs
- ✓ Bees, Cockroaches
- ✓ Fleas, Flies, Foxes
- ✓ Mice, Moles, Moths
- ✓ Pigeons, Rats, Rabbits
- ✓ Squirrels, Wasps

*Commercial and domestic works carried out
 by fully trained, insured and discreet staff*

www.h2oplants.co.uk
 Office: 01279 216538 Mobile: 07958 304744

**ADULT COMMUNITY
 LEARNING STANSTED** 
 Essex County Council

**Courses starting soon at the
 Peter Kirk Centre**

- Multi Gym – contact the centre to find out more about this new course.
- Paediatric First Aid starts 22nd April (2 days)
 09:30 – 16:30. Fee £102 /£16 benefit.
- First Aid at Work 13th May (1 day)
 09:30 – 16:30. Fee £54 or £11 benefit.

Ring us on **813319** quoting 'Stansted Link'
 email: lifelong.learningwest@essexcc.gov.uk
 or visit www.essexcc.gov.uk/adultlearning

**“A guaranteed
 buyer for
 our home.”**



Now that's
**Persimmon
 Perfect** 

Ask about our Part-exchange Plus* scheme today and we could even buy your old home. So you can look forward to a new life in a new home and forget about your chain, homebuyer's packs and estate agents. Now that's Persimmon Perfect.

Foresthall Park,
 Stansted Mountfitchet.
 Sat nav code CM24 8GD.

**NEW RELEASE OF
 3, 4 & 5 BEDROOM HOMES.**
Prices from £269,950

 **PERSIMMON**
 Together, we make a home



PART-EXCHANGE PLUS*

- A guaranteed buyer for your home
- No estate agent's fee

Call Henry on 01279 647454
 Open daily 10am – 5pm

7 DAYS A WEEK
08459 10 10 11†
www.persimmonhomes.com

Photograph shows the Jasmine house type at Foresthall Park. *Available on selected plots at selected developments, subject to status, terms and conditions and using a Persimmon-nominated solicitor as necessary. †Calls to 0845 numbers are now free with BT depending on your Calling Plan. Mobile and other providers' charges may vary. Prices and details correct at time of going to press.



MOUNTFITCHET GARDEN CLUB

www.mountfitchetgardenclub.co.uk

AGM

The Club's AGM was held on 7th April. The Chairman reported that the club had had another successful year and that membership numbers had been maintained. After recalling the various subjects, speakers, social events and visits made in the 2009-10 season, the Chairman told members that the 2010-11 season promised to be "as eventful and busy as the previous one!!" All members of the Committee were re-elected for another year.

May is the Start of the 2010-11 Season ...

Now is the ideal time to become a member as the new season starts on Wednesday 5th May. Our membership fees are £12.00 single and £20.00 double (two members at the same address). Visitors are always welcome to our meetings; there is a nominal charge of £2.00 per person. Meetings are held the first Wednesday of the month (with the exception of January) at the Day Centre (adjacent to the Library). Doors open at 7.30pm when we have our social time; the meeting itself starts at 8.00pm. 'Tropical Tresco - The Abbey Gardens' is the topic of our first meeting. Our guest speaker is Mr Robin Carsberg. The full 2010-11 programme can be seen on the website.

'Mini' Spring Show ...

Members were worried at the March meeting as, after the very cold and wet winter, nothing appeared to be growing in the gardens at all! However, the few days of sunshine at the end of March and beginning of April was enough to encourage the daffodils, tulips, polyanthus, hellebores and shrubs to flower and members took part in the club's first Mini Show.



Although the show was on a smaller scale with fewer classes than previous years it was encouraging that so many members took part, some entering for the first time! More photographs can be seen on the website. We look forward to welcoming you to our meetings.

Maralyn Harris
Chairman
Tel: 07919 478144

Something Tasty!

In 1981, in aid of the St John's Church Appeal, a little cookery book was compiled by Susan Robinson (now Mrs Bone) 'One Hundred and One Appealing Recipes'. These were mostly contributed by the ladies of the Church and in April this year the 'Link' published two of them. Here are another two which have stood the test of time.

Chicken with Bacon & Celery. Serves 4.

Adapted from an old recipe.

225g - 350 g (8-12 oz) cooked chicken or turkey, skinned and chopped

3 rashers streaky bacon, chopped

3 sticks of celery

25 g (1 oz) butter

25 g (1 oz) flour

300 ml (½ pint) milk

150 ml (¼ pint) single cream

1 teaspoon mixed herbs

salt and pepper

4 rashers back bacon or cold ham (optional)

Clean celery and chop it into 5 cm (2") lengths. Fry with bacon in the butter for 5 minutes. Scatter in the flour; stir and cook for 1 minute. Gradually blend in the milk and cream and stir until the sauce thickens. Add herbs and seasoning, then the meat, and simmer very gently for 10-15 minutes. Garnish with grilled bacon or ham if liked. Can be served on a bed of rice, garnished with watercress.

Almond Fingers

225 g (8oz) flour

110 g (4 oz) butter or margarine

50 g (2 oz) sugar

almond essence to taste

1 egg, separated

110 g (4 oz) icing sugar

Rub butter into flour, add sugar and almond essence and bind with beaten egg yolk. Roll out into a square.

Beat egg white until stiff; add icing sugar. Spread mixture onto rolled out pastry.

Place on a baking sheet and cut into fingers.

Bake in a moderate/hot oven, gas 6, 400 F, 200 C, for about 15 minutes.



Index to Advertisers

		Page			Page
Animal Care	Mercer & Hughes	BC	Household Services	A Better Aerial	28
Art and Craft	Millway Stationery	10		Bin Done	BC
Community & Care	Alzheimer's Society	26		A&M Collins Roofing	BC
	Carers UK	8		Do-It-4U	10
	Hearing Help	30		D T Bedroom Design	22
	Helpline	8		Fairweather Windows	FC
	Stansted Mountfitchet Social Club	24		Finch and Son	BC
	Uttlesford Carers	8		Gillson Carpentry & Joinery	28
	Ugley Village Hall (for hire)	32		Herts & Essex Window Doctor	24
Computing & Office	Alan Horsley (Computer Repairs)	8		JP Tiling	32
	Lan One (Accessories & Repairs)	28		Luxury Toilet Hire	24
	TCS (Set Up & Repairs)	12		Newman's Home Services	12
Education	Adult Community Learning	34		Nouvelle Carpentry & Building	30
	Montessori Day Nursery	28		Pest Control	34
	Rainbow Pre-School	30	Leisure	Purrfect Cleaning Company	24
	Spangles Children's Centre	6		Back to Basics (Pilates)	10
Electrical	Albury Electrical Services	12		Graham School of Dance	22
	A&I Electrical	16		Mitchell School of Dance	16
	Ethical Electrical	24	Motoring & Cycling	Melody Bear (for children)	26
	Stansted Electric	12		D Bonney & Sons	6
	Zelta Batteries	32		C C Valeting	28
Financial & Legal	Greenways Financial Planning	6		David Nunn's Garage	30
	Mansell & Co	BC	Painting & Decorating	Kiss (Driving Tuition)	32
	Pothecary Witham Weld	34		Ada Decorating	30
	The Utility Warehouse	24		Perfect Plastering	8
Food & Lodging	Bada Bing!	FC		Ray Morton (Decorating)	8
	Chocolates for Chocoholics	32	Personal Services	Shutes Painting & Decorating	16
	Eddie Ho Fish & Chips	8		Alterations by Manuela	BC
	Itsamaison (Holiday Cottage)	24		Baby Massage	32
	Pocknell Food Co	8		Dovaston-Harris (Beauty)	22
	The Cock at Henham	FC		Fancy Fingers (Beauty)	32
	The Cock (Stansted)	BC		Glynis Cheers (Hypnotherapist)	30
	The Dog & Duck	BC		R Handford (Chiropodist)	16
Funeral Services	Daniel Robinson & Sons	6		Jan Menell (Birth Preparation)	8
	J Day & Son	8		Jenna Perkins Massage	28
	D C Poulton & Sons	22		Lavender Blue (Health & Beauty)	10
Furniture & Furnishings	Fabrications	12		Lino Thomas (Hairdressing)	30
	Kate Harrison	32		Lower Street Clinic	34
	Knightbrooks (Carpets)	BC		Mobile Hairdressing	12
	Mosaics (Table Mats & Plaques)	26		NFSH	16
	New Look (Upholsterers)	26		Stansted Chiropractic	6
	Stansted Carpets	28		Stansted Psychotherapy	30
Garden Supplies, Services & Floral	N W Brown (Landscapes)	32	Printing & Stationery	Williams (Osteopath)	10
	Crystal Clear Ponds	26		What's a name's (Hairdressing)	BC
	D Honour & Son (Landscapes)	BC	Property Services	Copyzone	12
	H2O Plants	16		PhoenixTrading (cards)	30
	Selina Rankin Garden Design	16		Aldwych Construction	8
	Steve Hall Garden Services	32		Amperand Associates	26
	J R Johnston (Trees)	8		Bareham Overy Partnership	28
	Mayfair Ponds	22		Chris Osborn (Brickwork)	26
Heating & Plumbing	Harpers Plumbing & Heating	BC		Hibbs & Walsh (Architects)	28
	JDW Gas Heating Specialist	26		Jason Bagge Architecture	24
	Jones & Co (Plumbing)	8		Masons (Builders)	BC
	Orion Heating	BC		Persimmon Homes	34
	Ray the Plumber	12		Savill Brickwork	26
	Stansted Gas Services	28	Retailers	A C Wright Building Contractors	12
				Family News	12
				John Wilson Jeweller	10

BIRTHDAYS, ANNIVERSARIES or SPECIAL OCCASIONS

If you would like to mark any occasion that is special to you or someone you know, by announcing it in the Link, please email a short message together with your name address and telephone number to: announcements@stanstedlink.org.uk or send the form below to 7 Blythwood Gardens, Stansted CM24 8HG. Details must be submitted by the 11th of the month for publication the following month.

Message _____

Sender's Name _____ Tel _____



Mansell & Co. LLP est 1970

Chartered Certified Accountants, Registered Auditors

All aspects of accounts, audit and taxation

We are an established firm offering a cost-effective and professional service to businesses of all sizes, both start-ups and existing businesses changing advisor

Please contact us for a free consultation, quoting "Link"

Mark Williams FCCA or Jeremy Fozzard FCCA

5 Ducketts Wharf, South Street, Bishops Cleeve CM23 3AR



01279 658499

info@mansellandco.org



WHAT'SA NAME'S

UNISEX HAIR SALON

- Haircutting and Restyling
- Colouring
- Perming
- Children Welcome
- 20% Discount for Senior Citizens *(weekdays only)*

OPENING TIMES

Monday - 9.00am to 5.00pm

Tuesday to Friday - 9.00am to 6.00pm

Saturday - 8.30am to 4.30pm

Out of hours appointments by request

01279 817899

1 Lower Street Stansted CM24 8LN



THE COCK

30 Silver Street, Stansted 01279 812964

Home Cooked Food served 7 days a Week

Families Welcomed ~ Children's Play Area

Children's Menu ~ Heated Decking

Lunches Mon - Sun 12.00 - 2.30 pm

Dinner Mon - Sat 6.00 - 9.00 pm

Meal Deal (Two Main Meals £10) Mon - Wed 6.00 - 9.00 pm

OAP Lunches Mon - Fri 12.00 - 2.30 pm

(One Course £4.95 Two Courses £7)

Bar Snacks ~ Sunday Roasts ~ Fish Night Thursday

A & M COLLINS ROOFING

Guaranteed Workmanship



- SLATING • TILING • LEADWORK •
- ZINCWORK • GUTTERING • FLAT ROOFS •
- REPAIRS • UPVC FACIAS & GUTTERS •

Tel/Fax: 01279 816491 Mobile: 07956 873230

35 Gilbey Crescent Stansted CM24 8DT

Email: axmcollins@talktalk.net

www.roofer-essex.com



CARPETS • VINYL • UNDERLAYS • SUPPLIED & FITTED

*Old Carpets Uplifted & Disposed of
Free Grippers and Door Bars*

Steve & Donna

Office: 01279 730172 Mob: 07939 739845

Unit 11 Heathview Pond Lane Hatfield Heath CM22 7AB

D. Honour & Son

(Landscape) Ltd.
Your local Marshalls approved Installer
Brickwork Paving Fencing



Tel: 01279 813160

www.honourlandscapes.co.uk

The Old Brickyard, Elsenham Road, Stansted, Essex CM24 8ST



MASONS

NEW BUILD & ALTERATIONS

- | | |
|-------------------------|----------------------|
| ▲ Extensions | ▲ Landscaping |
| ▲ Loft Conversions | ▲ Garage Conversions |
| ▲ Painting & Decorating | ▲ Maintenance |
| ▲ Kitchens & Bathrooms | ▲ Repairs |

Specialist

Brickwork • Carpentry • Plastering • Plumbing • Electrics • Tiling

Office: 01279 816883 or 01277 896555

Mob: Dave 07576 753811 Rob: 07531 834686

FINCH & SON
KITCHENS
BATHROOMS • BEDROOMS
PLUMBING • CARPENTRY
SMALL BUILDING WORKS
DECORATING • TILING

Paul Finch (BEng)
 07981 907 624 finchandson@gmail.com

ALTERATIONS BY MANUELA
 Clothing alterations and repairs professionally done with care by a seamstress with over 25 years' experience in the centre of London

- ◆ Leather
- ◆ Suits
- ◆ Trousers
- ◆ Children's Clothes
- ◆ Dresses
- ◆ Zips

Manuela Riveiro
 Office 5F, 1st Floor (Above Bairstow Eves)
 5 Bridge Street, Bishop's Stortford CM23 2JU

0780 928 4050
SAME DAY SERVICE IF REQUIRED



Harpers Heating & Plumbing Ltd
www.harpersplumbing.co.uk

All Plumbing, Heating & Gas Repairs
 Servicing & Installation
 Bathroom & Water Softener Installations
 Power Flushing ~ Gas & Oil Specialists
 Solar Hot Water Installations
 Air & Ground Source Heat Pumps
 OFTEC Approved Oil Engineers

Tel: 01279 771981 Mob: 07885 597063
Email: nharper114@aol.com



"BIN DONE"
WHEELIE BIN CLEANING SERVICE

- Fully Insured
- Professional Equipment
- 4 Weekly Cleaning Schedule or One-offs
- 1 Bin: £3.50 2 Bins: £5.50 (Min 6 Cleans)
- Same Day as your Waste Collection

Tel: 01279 851106 Mob: 07754 238968
Email: bindone@btinternet.com



MERCER & HUGHES
Veterinary Surgeons




Surgery Hours
 Mon - Fri 8.30 am - 10.30 am
 4.30 pm - 7 pm
 Sat 8.30 am - 10 am

80 Cambridge Rd, Stansted
 Tel 01279 813780

Also surgeries at Saffron Walden & Dunmow
www.mercerandhughes.co.uk

BAHVS
 British Association of Veterinary Surgeons

RCVS
 ACCREDITED PRACTICE

The Dog and Duck



Lunchtime food now available
Wednesdays Pie Night
Thursdays Monthly Quiz Night

Sally & Mark look forward to seeing you soon
58 Lower Street, Stansted
01279 812047

Orion Heating.co.uk
Woodburning Stove and Fireplace Shop

Stoves and Cookers to suit all homes
 You might like a small efficient stove to help take the chill off of cool evenings, or a cast iron cooking range for perfect roasts. Orion Heating have a large range of appliances in eco-friendly woodburning or the more flexible gas, oil, electric and solid-fuel options.




Opening hours
 Monday to Saturday
 9:30am to 5:30pm
 Closed Wednesday
 and Sunday
 Closed for lunch
 1:00pm to 2:30pm

Stove shop in Stansted
 Orion Heating have been trading in the area since 1977. We are now pleased to invite customers to our family run Cambridge Road shop.

Free surveys and quotes can be arranged through our network of HETAS registered independant installers. Call in to discuss the best stove for your home.

01279 813591 25 Cambridge Road,
 Stansted, Essex, CM24 8BX