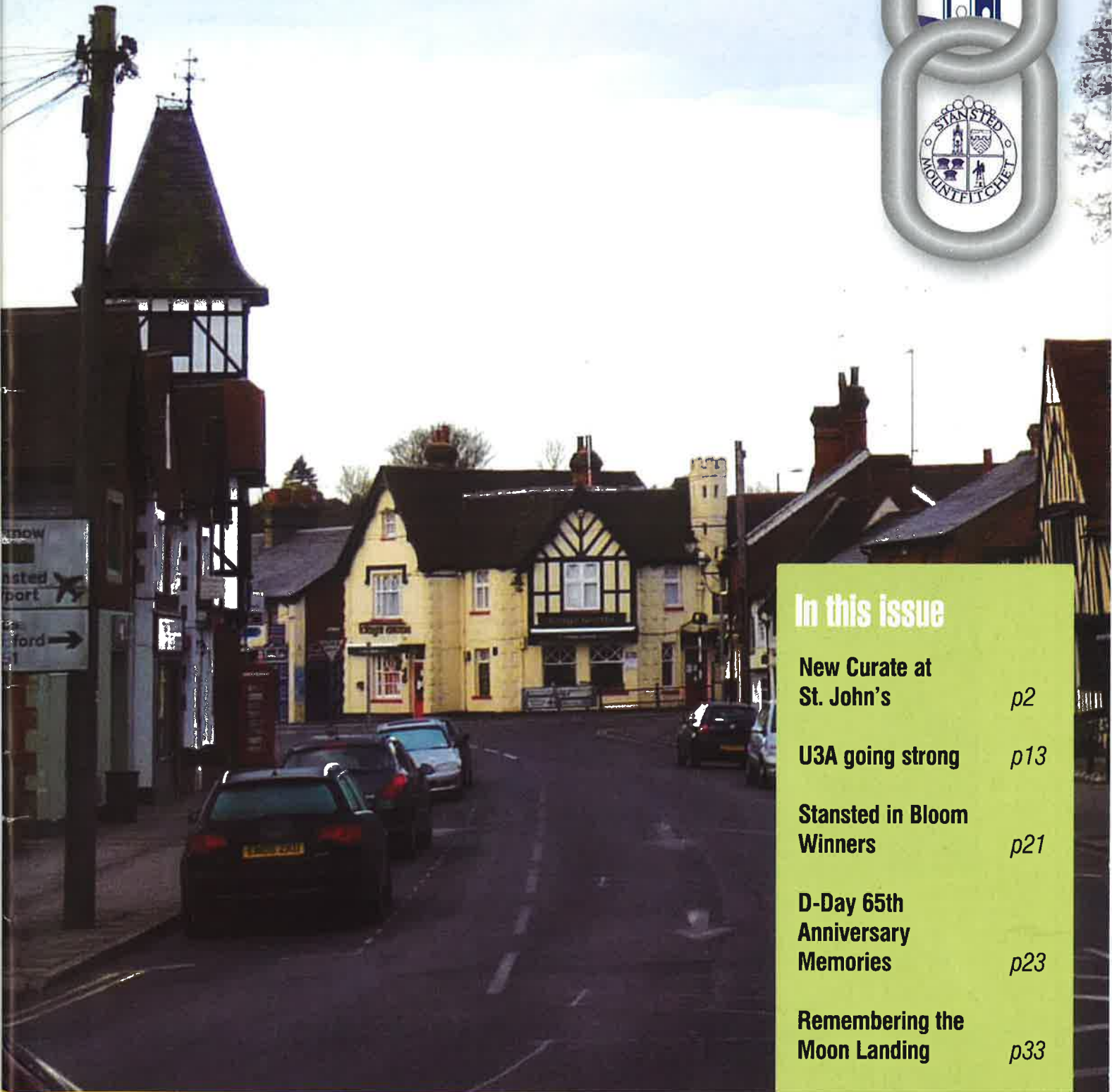


Stansted Mountfitchet

The Link



In this issue

- | | |
|--|------------|
| New Curate at St. John's | <i>p2</i> |
| U3A going strong | <i>p13</i> |
| Stansted in Bloom Winners | <i>p21</i> |
| D-Day 65th Anniversary Memories | <i>p23</i> |
| Remembering the Moon Landing | <i>p33</i> |

Mansell & Co. LLP

Chartered Certified Accountants, Registered Auditors

We are a friendly local firm of qualified professionals offering a flexible and reliable service tailored to suit you, including:

- Start-ups and incorporations
- End of year accounts
- Statutory audits
- VAT Returns, payroll & bookkeeping
- Self-assessment tax returns
- Construction Industry Scheme

If you need tax advice, are starting a new business or feel your existing business is not receiving the right service at the right price contact Mark or Jeremy, details below, for a free, no obligation meeting, your place or ours!

[Get in touch for a free consultation, quoting "Link"](#)



5 Ducketts Wharf
South Street
Bishops Stortford
CM23 3AR
01279 658499



mansell.co@btconnect.com www.liontamers.co.uk
P'tners: Jeremy Fozzard FCCA & Mark Williams FCCA
Chartered Certified Accountants, Registered Auditors

FLUTES TAPAS+BAR

- ❖ Fabulous traditional dishes
- ❖ Stay as long as you like (one sitting)
- ❖ Home-made Spanish desserts

40 Lower Street, Stansted CM24 8LR

01279 817474

www.flutestapasbar.co.uk

Please check our website for
forthcoming events & special offers

Tapas for a Tenner!!

Choose any three dishes on the available
menu for only £10.

Tuesday to Saturday lunch time
Tuesday & Wednesday evening

Sunday Roasts

Local, fresh produce cooked to order
Three meats with all the trimmings
1pm till 4pm ~ only £9.95pp

Bada Bing!

Ristorante Italiano



Lunch and Dinner
Sunday Lunch
Bookings recommended

Peter and Angie Ruggiero
present to you the
true taste of Italy in Stansted

Authentic Italian Cuisine
Stone Baked Pizzas
Ruggiero Family Pasta dishes
Speciality Meat, Poultry and Fish dishes
All our food is prepared on the premises

A family restaurant for all to enjoy
Tel: 01279 817177 Fax: 01279 813866

30 Lower Street Stansted CM24 8LP
www.badabingstansted.com
Email: badabingstansted@aol.com

Tuesday - Saturday 10 am - 3 pm and 6 pm - midnight
Sunday Breakfast 10 am - 11 am and Lunch noon - 4 pm
Closed Sunday evening and all day Monday

NEW Professional Event Management - Catering for all Outside Events

The Link is an independent publication supported by local churches, businesses and the parish council

Editor:
 Derek Honour
 01279 647213
editor@stanstedlink.org.uk

Advertising:
 Mike and Marion Dyer
 01279 814059
adverts@stanstedlink.org.uk
 or check on website for prices

Distribution:
 Emily Winter
 01279 812216
distribution@stanstedlink.org.uk

Treasurer:

accounts@stanstedlink.org.uk

Committee:
 Yvonne Ayres
 Susan Bone
 Katharine Hurford
 Dick Pollard
 Eileen Quinn
 Ruth Rawlinson

Printers:
 Copyzone
 01279 657769

CIRCULATION:
 The Link is delivered free to 2700 homes and businesses in Stansted Mountfitchet. Further copies may be purchased for 50p each or £5.00 for the year.

CONTRIBUTIONS:
 by email (*preferred*) to:
editor@stanstedlink.org.uk
 for articles
events@stanstedlink.org.uk
 for 'What's on' page
 or by hand to:
 7 Blythwood Gardens,
 Stansted CM24 8HG

 by **noon** on 11th July
 for the August issue
 by **noon** on 11th August
 for the September issue

Editorial



The traditional holiday season is approaching fast. Whilst the original meaning of 'holy day' has changed through the years, the need to have a period of mental regeneration has not, and for some it has become an imperative. If the forecasters are to be heeded, we may be in for a better summer than the past two, so let us use it to put economic and other turmoils into perspective.

In this regard the 'Stansted in Bloom' competition, illustrated in this issue, shows the therapeutic merits of gardens and green spaces. Poets have long extolled their tranquilising benefits but in an increasingly fast-moving and technological age they provide an antidote to everyday pressures and, irrespective of whether they are of champion quality, they bring us back to our roots.

The newly formed Stansted Mountfitchet branch of U3A has got away to a good start. Although most of their events are held during the day, it is possible for evening courses to be run, so if this is more suited to some, it would be helpful to the organisers to know if there is sufficient demand. The recently closed branch of the WEA enjoyed good evening support for many years. Membership of Stansted U3A is still open, but the branch may have to establish a ceiling if demand continues to rise.

CONTENTS

Thought for the Month	2	494 (Stansted Airport) Squadron	
Church News	2-3	Air Training Corps	23
Hatfield Forest Highlights	4	Stansted Mountfitchet Windmill	23
Huw Johnson Club	4	Congratulations	23
Myths, Legends, Customs	4	National Childbirth Trust	24
Stansted Day Centre	4	Stansted Bowling Club	24
Village Events	5	Nature Notes	25
Spangles Children's Centre	7	music@stansted	25
Stansted Cricket Club	7	Wellbeing	27
In Memoriam -		Mountfitchet Garden Club	27
Desmond Elsmore	9	Bentfield Primary School	29
Stop Stansted Expansion	11	Pilots at Stansted Free Church -	
Stansted Conservatives	11	Profile	29
In Memoriam - Richard Crosby	13	Hargrave House	29
Stansted Mountfitchet U3A	13	Necessary Things to Do	31
Stansted Evening WI	15	Birchanger Karate Club	31
Rainbow Pre-School	15	Skywatch	33
stansted network	17-20	St Mary's CE Foundation	
Stansted in Bloom	21	Primary School	33
Stansted Tennis Club	21	Stansted Lunch Club	35
British Red Cross	21	The King's Arms	35
Announcement	21	Index to Advertisers	36

DISCLAIMER

Opinions expressed in this magazine are given freely and do not necessarily represent those of the editorial committee

THOUGHT FOR THE MONTH

Dear Friends

It is with great joy that we in the Benefice of Stansted Mountfitchet, with Birchanger and Farnham, welcome Giles Tulk to be the new curate in the Benefice. I've asked Giles to introduce himself.

Paul Wilkin, Rector

May I extend my warm greetings to all the readers of the 'Link'. As from 5th July I will have the privilege of serving as your Curate in the United Benefice of Stansted Mountfitchet, Birchanger and Farnham. We have moved in to Gilbey Crescent and are settling in to our new life in Stansted. I look forward to getting to know many of you, so please do say "hello" if you see me out and about; don't be put off by the dog collar as I am perfectly normal! I am a reasonably local lad, having grown up in Sheering, and then lived for the last 15 years with my wife Sara in Saffron Walden, Great Sampford and Thaxted. Sara is Head of the English, Drama and Media Faculty at Herts & Essex High School. My faith journey to being a Curate has not been a straightforward one. I came from a non-church going family. My main Christian input in my early childhood came from attending a C of E primary school and taking part in major church services with the Cubs and Scouts. Like a lot of teenagers I drifted away from the church although maintaining a strong personal faith. Whilst at Leeds University reading economics, attending church often tended to get squeezed by other activities, particularly hiking in the Yorkshire Dales with the Hiking Club on a Sunday. After leaving university and meeting Sara we started to attend church together. At first we seemed to have so much to fit in on a Saturday and Sunday. However, gradually I found that attending church on a Sunday morning became the bedrock of the week for me, and if, for whatever reason, we missed a service, I felt like something was missing from my week. As my faith continued to deepen I started to feel a sense of calling. Being a pragmatist I tended to discount this, arguing with myself that there were far more worthy people than me who could be priests. However, my sense of calling grew stronger and I plucked up the courage to speak to my local Vicar. I always remember his first words were "about time".

The rest, as they say is history. I passed the selection process, which felt at times rather like a clerical version of The Apprentice! I studied part time at Cambridge with the Eastern Region Ministry Course whilst still working three days a week in London for a major firm of management consultants. Continuing to work whilst studying did present some demands but provided a useful opportunity to bear witness in the workplace. I was always struck by the fact that many of my colleagues said they did not attend church as they felt they were not good enough, to which my response was always, "we go to church exactly because we all tend to fall short". Some of the reactions to my training were quite funny, with certain colleagues suddenly trying desperately hard not to swear in my presence! I strongly believe that God always finds ways to use our life experiences, both good and bad, to serve Him and others. I do not therefore regard my 20 years working in commerce as wasted years because they have given me a real insight in to the pressures that businesses and people face on an ongoing basis. For anyone reading this who senses that they might have a calling to a vocation in the church I would say follow it up and speak to Paul or me. You never know where it might lead you!



God Bless, Giles



We believe in Life before Death

The total raised in Christian Aid week was £1325, which was collected in the envelopes and at the Shalom Quiz. Thank you to everyone who contributed, and to the volunteers, some of whom came forward at the last minute. The money will be used to fund Christian Aid's partners working in the poorest countries to give hope of a better future to the most disadvantaged.

Countdown to Copenhagen

When the country is focused on beating the recession and local political difficulties, the urgent matter of dealing with man-made climate change can be overlooked. In December this year world leaders will gather in Copenhagen, and the decisions that are taken there will be crucial if this country is to achieve a cut in carbon emissions of 80% by 2050, and if the developing world is to be helped to reduce emissions, develop cleanly and adapt to climate change. Christian Aid has produced a postcard to send to the Prime Minister with a request that the Copenhagen Summit should deliver a fair deal for the world's poor. If anyone would like to send one of these (Freepost) I have a supply, and will put some in the churches.

Catherine Dean
Tel: 813579



STANSTED FREE CHURCH

Methodist / URC

Chapel Hill

www.stanstedfreechurch.org.uk

Ministers Rev'd Allen Morton
Tel: 757635
minister@stanstedfreechurch.org.uk

Rev'd David Mullins (on sabbatical)

Lettings Janet Townsend
58 Chapel Hill, Stansted CM24 8AQ
Tel: 812593

Or

Marion and Mike Dyer
7 Blythwood Gardens, Stansted CM24 8HG
Tel: 814059
lettings@stanstedfreechurch.org.uk

Preachers for July

5th 10.30 am Jerry Heyhoe
12th 10.30 am Gillian Taylor
19th 10.30 am Rev'd Allen Morton
Holy Communion
26th 10.30 am Rev'd Stuart Veitch



All enquiries: The Church Office, St John's Hall,
St John's Road, Stansted CM24 8JP
Tel: 815243
Email: st.johns.church@btinternet.com
Office hours: 9.00am-12 noon, Monday,
Wednesday, Friday
Administrator: Mrs Elizabeth Jennings
Website: www.stansted.net/stjohns

Rector: Rev'd Paul Wilkin
Tel: 812203
Email: paulwilkin@iname.com

Assistant Curate: Tel: 815243
Email: through the Church Office

Director of Music: Lorraine Everett
Email: church.music@stansted.net

St John's Diary

Sunday

8.00am	Said Holy Communion	Junior Church meets in church at 9.30am.
9.30am	Worship 4 All (1st Sunday)	The Lazer youth group meets on Sunday evenings at 7.30pm.
9.30am	Choral Eucharist (2nd - 4th Sundays)	

Monday-Wednesday

8.30am	Morning Prayer	There are services of Holy Communion on the first Tuesdays and Wednesdays of the month in Norman Court, Hargrave House and Broome End Nursing Homes.
5.00pm	Evening Prayer	

Tuesday

9.00am St John's Tots

Wednesday

10.30am Holy Communion

Thursday

8.30am Morning Prayer

Saturday

9.00am Morning Prayer

From the Registers

May

Baptisms

3rd Chloe Victoria Houghton, James Robert Houghton, Laura Frances Houghton, Benjamin Lee Williams, Evan Jack Williams, Pamela Rose Houghton, Jacqueline Mary Powter, Wendy Joy Petts, Jennifer Jane Williams

10th Oliver Robert Alfred Atkinson, Gracie May Dukes, Jamie Duncan, Kirk Duncan, Amanda Duncan

31st Georgia Louise Cope, Annabelle Elodie Henry

Marriages

24th Marie Jeanne Arber to Glenn Kirkham

Funerals

11th Desmond Hugh Elsmore, age 81 - at St John's
20th Howard Verdun Whittington, age 92 - at Parndon Wood

There was a happy occasion in the Church Hall on 31st May when the three parishes came together for a finger buffet to mark the departure of the Rev'd Dr Caroline Curren for her new post as Priest in Charge of four parishes near Brighton in Sussex. Earlier, at the Eucharist in St John's, Caroline was presented with a stole, a framed photograph of the congregation and a cheque. Caroline said that, for her, the four years in the Benefice had been filled with many happy memories, a feeling reciprocated by everyone present. She goes with so many good wishes.

Editor

Hill Chilli

Sonia's annual **Hill Chilli** will be held at 31 Chapel Hill on Friday 10th July from 7.00pm-10.00pm. Tickets £10, which include first glass of wine, from Susie Ball tel 816407 and Sonia Levy tel 815282. A vegetarian option is available on request. Proceeds towards St John's Church Hall funds. See also entry on 'Village Events' page.

ROMAN CATHOLIC

St Therese of Lisieux
High Lane

Priest Father Joe White
The Presbytery
St Therese of Lisieux
High Lane
Stansted
Tel: 01279 814349

Masses Saturday	6.00pm
Sunday	9.00am and 10.30am
Holy Days of Obligation	8.00am and 8.00pm
Tuesday-Saturday	9.30am

Confessions

Saturday	10.00am and by appointment
----------	-------------------------------

Baptisms

By appointment

SOCIETY OF FRIENDS

Quaker Meeting House, Chapel Hill

Clerk Mrs Anthea Lee
24 Lea Close
Bishop's Stortford
Tel : 01279 656707

Meeting Sunday, 10.30am



SHALOM

Our final meeting for this term is on Monday 13th July when we meet at 7 Blythwood Gardens for music and party - in the garden if fine!! We start at 8.00pm - do join us!

Marion Dyer
Tel: 814059



HATFIELD FOREST HIGHLIGHTS

Hello everyone. I hope you have been out and about enjoying the lovely weather when given the chance? Here at Hatfield Forest we have been keeping ourselves busy in the run up to the summer holidays where we look forward to welcoming all of you here.

We were lucky with the weather during the May half-term break when I hope many of you took the opportunity to come and enjoy the forest. There were many successful events including our Pond Safari, where tadpoles were discovered; and our Forest Survival Skills course, where we learnt about many delicious foods that can be found and foraged here on the forest including hawthorn, rose hips and sheep's sorrel. On the lake many birds have been successful this spring, one of the most endearing sights being three great-crested grebe chicks piggy-backing on their parents for a swim around the lake.



Some of you may have been lucky to meet our very own historical celebrity Jacob Houblon, who has been making appearances in the Shell House as part of the 250th birthday year. Next time you are in the forest come and have a look inside the Shell House where you can see that some of the shell pictures are missing. We are looking for inspiration from all our visitors to help design those ones we know nothing about and hopefully get the best ones made. Historical descriptions

include the use of seaweed, moths and bugs as part of the pictures. If you have any ideas for pictures that you would like to be submitted then please send in your drawings; you never know, your design could make it on to the walls of the Shell House.

If you are looking to come and enjoy the forest while getting fitter, than why not join one of our Healthy Walks. Every Thursday our friendly walkers have been meeting at the main gate at 9.45am to meet up and enjoy a walk round the forest with the benefit of meeting new people while getting healthier. There has also been quite a buzz about the local honey available from the shop and we have barely been able to keep up with the demand. As well as honey from just down the road in Hatfield Broad Oak we have recently started to stock some delicious local apple juice grown and pressed in Wisbech. As always I look forward to seeing people enjoying the forest and welcome any questions or comments if you see me around.

Laura Slater
Community Warden
01279 874043
laura.slater@nationaltrust.org.uk



Huw Johnson Club

Congratulations to Hannah Leith on gaining the Jack Petchey Award for her work at the Huw Johnson Club. Her prize is £200 for the Club's funds. Hannah has been a great help at the club and our members really enjoy her company and assistance. Well done Hannah! We are most fortunate with all our young helpers. Caroline, Lauren and Rachel along with Hannah, certainly tell us that today's teenagers are not all self-centred. Thank you very much to them all. Perhaps one or two teenage boys would like to join us?

We now say a big thank you to all our drivers, escorts and helpers by inviting them to an annual lunch party. This year it will take place on 12th July at The Oaks in Great Easton hosted by Hannah and Chris Ropkins. Plans for our seaside trip are in hand and we hope to plan another day out in September. Thank you to all those who attended our coffee morning (more news on that next month).

Marion Johnson

MYTHS, LEGENDS, CUSTOMS

ELM *Ulmus sp.*

Elms are associated with death and the Underworld in many respects. In Greek mythology Orpheus rescued his wife Eurydice from the Underworld. He paused to play her a love song on his harp and there an elm grove sprung up. In Celtic mythology the elm trees were associated with the Underworld also. They had a special affinity with elves who were said to guard the burial mounds and the passage into the Underworld. 'Wych' elm refers to the wood being pliant, not to witches, who were said to shun elm trees. The wood is very durable below ground and is traditionally used to make coffins. English elm had a reputation for dropping large boughs without warning and as the old saying goes "Elm hateth man, and waiteth"! Although connected to death, the elm was also used for medicine. The inner bark was chewed or boiled to make a drink for colds and sore throats and the boiled bark was also used to treat burns - so not all bad!

Peggy Honour

STANSTED DAY CENTRE

We require a cook for one day per week at the Day Centre. The hours are 9.00am to 1.30pm. If you think you might be interested, please telephone me for more information. We are also looking for a couple more volunteers who might be able to do a fortnightly shift of just two hours. If you think you might be able to help, please telephone.

Kat Lupton
Day Centre Manager
Tel: 815091 or 812144

UGLEY GARDEN FETE

2 - 4 pm Sat 4th July

Mammoth White Elephant Stall
Magnificent Bottle Tombola
Fun Dog Show ~ Raffle ~ Books
Cakes ~ Produce ~ Toys
Mouthwatering Teas ~ Games Galore
... at **The Cottage, Snakes Lane**
(between B1383 & Ugley Green -
follow the signs)

music@stansted

Summer Soirée

by talented young musicians

6 pm Saturday 4th July
St John's Church

Tickets must be purchased in advance from:
Stansted Carpets or Sonla Levy tel 815282
£12 adults, £5 children (includes supper)
Interval Jazz



Stansted Windmill
Open 1.30 - 5.30

St Mary's Church
Open 2- 5 pm



Sunday 5th July
Sunday 2nd August

VILLAGE EVENTS

July

1	Wed	Mountfitchet Club	Day Centre 2 - 4 pm
		Mountfitchet Garden Club	Day Centre 8 pm
3	Fri	Conservatives Pub Evening	The Rose & Crown 8 pm
4	Sat	Ugley Village Fête	The Cottage, Snakes Lane 2 - 4 pm
		Music @ Stansted Soirée	St John's Church 6 pm
5	Sun	Windmill Open	1.30 - 5.30 pm
		St Mary's Church open	2 - 5 pm
		Conservatives Drinks Party	Brambles, St John's Rd noon
9	Thu	WI	St John's Hall 7.45 pm
10	Fri	Hill Chilli	31 Chapel Hill 7 - 10 pm
11	Sat & 12	Sun Skips	Lower St Car Park 9 am - 3 pm
11	Sat	Music in the Park	Bentfield School 2 - 8 pm
		Berden Fete	Berden Hall 2 pm
12	Sun	Gardens Open	Manuden 2 - 6 pm
13	Mon	Shalom Party	7 Blythwood Gdns 8 pm
16	Thu	U3A	St John's Hall 2.30 - 4.30 pm
19	Sun	Manuden Glyndebourne	Wilford House, The Street 6 pm
23	Thu	No 7 Bus Meeting	Day Centre 3 pm
25	Sat & 26	Sun Skips	Lower St Car Park 9 am - 3 pm

August

2	Sun	Windmill Open	1.30 - 5.30 pm
		St Mary's Church open	2 - 5 pm
5	Wed	Mountfitchet Club	Day Centre 2 - 4 pm
		Mountfitchet Garden Club	Day Centre 8 pm
8	Sat & 9	Sun Skips	Lower St Car Park 9 am - 3 pm
15	Sat	Fête	Hargrave House 2 - 4 pm

HI! CHILLI!!



7 - 10 pm
Fri 10 July

'Sonia's Place'

31 Chapel Hill

Tickets £10 includes food
and first glass of wine

(Cheques to Stansted P C C)

Tel 816407 or 815282

Lovely Food ~ Good Company

In aid of Church Hall funds

To advertise your August event on
this page please
tel 814059 or email
events@stanstedlink.org.uk
by 11th July

SUMMER FÊTE

2 - 4 pm Sat 15th August
Hargrave House

Barbecue ~ Tombola
Cream Teas ~ Raffle
and much more ..

All Welcome ~ Entry only 50p

*To raise funds for a motorised
scooter to benefit our residents*

Manuden Open Gardens

2 - 6 pm Sun 12th July



Teas

Plants



*Pictures by Local Artist for Sale
Parking & Programmes at the
Village School. Children Free*

Bentfield Primary School PTA

music
in the park

Saturday 11th July
Music from 2pm - 8pm

Come and join us for
a wonderful family day!

Tickets £7.50 in advance
from Bentfield school or
£8.50 on the gate
Kids under 16 go free
if with an adult

PLUS ...

Live Bands ~ Barbecue
Bouncy Castles
Beer Tent ~ Ice Cream
and lots, lots more

Manuden Village Glyndebourne

6 for 6.30 pm Sun 19th July
Wilford House, 70 The Street
St Mary's Church if wet

*Bring your friends and picnics!
Excerpts from Gilbert & Sullivan*

Entry by programme

£10 adults, £5 students
from Fiona 812157 or at the door

All proceeds to Scott Cottage
(Local Mencap Organisation)

BERDEN VILLAGE FÊTE

2pm Saturday 11th July

Steel Band ~ Brass Band
Morris Men ~ Classic Cars
Children's Entertainment

TRADITIONAL STALLS

*Held in the beautiful grounds
of Berden Hall*

DANIEL ROBINSON & SONS

Independent Family Funeral Directors
& Monumental Masons

24 hour Family Careline

For help, advice and assistance, please telephone:

79/81 South Street
Bishop's Stortford
(01279) 655477

3 Bullfields
Sawbridgeworth
(01279) 722476

146 High Street
Epping
(01992) 560890

Wych Elm
Harlow
(01279) 426990

Haslers Lane
Great Dunmow
(01371) 874518

Shire Hill
Saffron Walden
(01799) 523314



Golden Charter
Funeral Plans

www.drobinson.co.uk

D BONNEY & SONS (Manuden)

MOT Testing ~ Diesel & Catalyst

Selection of New & Used Cars
Accident Recovery Work
Welding & Chassis Repairs
Borg & Beck Clutch Point Centre
Calor Gas Stockist

We help YOU the motorist by

- cheaper labour rate
- guaranteed workmanship
- free collection & delivery in local area

**Familiar with most makes of vehicles
including four wheel drives**

Please ring Malc or Neil on 01279 813315 or 815946

Greenways Financial Planning

INDEPENDENT FINANCIAL ADVISERS

An Authorised Representative of Sesame Ltd. which is
Authorised and Regulated by the Financial Services Authority



Professional friendly advice
on



Investments ~ Pensions ~ Mortgages
Life Assurance ~ Critical Illness
Income Protection ~ Annuities
Estate Planning ~ Long Term Care

David Turner Cert PFS CeMap
Principal

'Greenways' Park Rd Elsenham CM22 6DF

Tel/Fax 01279 816622

e-mail dtturner@greenways-financial-planning.co.uk

Spangles*

Children's Centre

Lower Street, Stansted CM24 8LR

- ☆ Variety of activities for ages 0 - 5
- ☆ Fully qualified staff
- ☆ Open 9 am - 5 pm every weekday
(except Bank Holidays)
- ☆ Information for all your family needs

Call us or drop in for a look around
& pick up a time table.



01279 812348

SureStart



Essex County Council



How are YOU feeling today?

Are you living with aches and pains and just
putting up with them?

Feeling that if you ignore them long enough they will hopefully go away?

Well it's time you sought the helping hand of a registered Chiropractor and found
out what's wrong and if we can help.

We are offering an initial consultation with the
Chiropractor which includes a thorough physical and spinal examination for

£25

(normal fee £50) on production of this advert.

Digital X-ray facility on site

MRI on referral

Dexa Scanning for Osteoporosis Available



Chiropractic can
successfully treat:

Back Pain
Headaches
Sciatica
Neck/Arm Pain
Leg Pain
Sports Injuries
Shoulder Pain
RTA Injuries

Dr M Gurden MSc (Chiro), DC, PhD
Dr M Morelli MSc (Chiro), DC
and Associates
Registered Chiropractors



Members of the
British
Chiropractic
Association

Stansted Chiropractic and Back Pain Clinic

20 Cambridge Road, Stansted CM24 8BZ www.greatback.co.uk

01279 815336

Spangles*

Children's Centre

At Spangles Children's Centre we are always trying to work with the local community and provide events and activities around what is needed. We have a number of partners who contribute toward the successful running of the Centre; local schools, pre-schools and nurseries, our Health Visiting Team, midwives, local library, childminders and the public users of Spangles all contribute towards the planning of our timetable. The building is now used most days from 9.00am through to 9.00pm, with the Children's Centre numbers expanding and the Youth Club running more groups for older children in the evenings.

Recent additions to the Spangles timetable are a parent-craft group, run by local midwives for expectant mums and dads. This gives help and advice around the preparation for labour and delivery. Once the baby is born parents are invited back to a six week course called 'First Time Around?' Delivered by the Health Visiting Team with specialist speakers invited along; these sessions offer a real practical introduction to the new baby and discuss issues like sleeping, playing, baby massage, first aid, childhood illness and weaning.

Of course Spangles is here all week to support parents and find answers to the multitude of questions that are put our way. When we were asked for keep fit activities for new mums, we did a little better and found keep fit for new mums but with their babies, promoting attachment and bonding between mum and baby at the same time as getting fit and releasing all those feel good hormones.

Whilst all of these events are going on at Spangles in Stansted, another member of our team is reflecting them in our outreach areas. Saffron Walden, Takeley and The Rodings currently have the benefit of Spangles services and we are looking to research and possibly expand into Hatfield Heath (where we understand the baby and toddler group has stopped), Elsenham and Little Hallingbury.

On 11th May I was very pleased to receive an invitation to a reception at 10 Downing Street. Essex County Council had



put my name forward as Co-ordinator of Spangles to attend the reception which coincided with the opening of the 3000th Children's Centre in the country. There are around 500 more Centres to be opened. Hosted by the Prime Minister himself, Gordon Brown indicated that he would like the Children's Centres to be statutory organisations, just like the baby clinic or local nursery.

Amanda Fitchet
Spangles Co-ordinator



Stansted Cricket Club

<http://stanstedcc.hitscricket.com/home/default.aspx>

It is with great regret that the club has to announce the passing of John Stewart Pape, Stansted CC's official scorer, who died on 1st June. John had been the club's scorer for 61 years and was a well-known and well-loved character in the village, at Essex County Cricket and with our opposing cricket clubs.

Pavilion redecoration work has now been completed and the emphasis has switched to improving the areas around the pavilion to create an extended picnic area and to tidy up the car park.

On the field, the 1st XI have won five of their first six matches and are now 3rd in Div 4. The 2nd XI have won three matches and are joint 5th in Div 6. The Sunday XI has had one win from three matches to date. On 28th May, the club hosted the West Essex District Cricket Board league match between the West U13s and North U13s. North won an exciting game and there were over 40 spectators, who enjoyed a wonderful afternoon in the sun.

Recent top individual batting performances have been: I Parsons (93), C Kirby (79 and 77 no), R Gardiner (57), M Baldock (59 no) and D Ayres (67 and 51 no). More details can be found on the club's website. Home matches for July are

Sat 4th	2nd XI v Thorley II	1.30pm	Div 6
Sat 11th	1st XI v Stansted Hall II	1.30pm	Div 4
Sun 12th	Sun XI v President's XI	11.30am	Friendly
Sat 18th	2nd XI v Chadwell Heath II	1.30pm	Div 6
Sun 19th	Sun XI v Newport	2.00pm	Friendly
Sat 25th	1st XI v Harlow Town II	1.30pm	Div 4
Sun 26th	Sun XI v Stocking Pelham	2.00pm	Friendly

If anyone from the village wishes to join the club, please contact David Hedge 812509 (Adults) or Keith Ayres 814471 (Juniors).

David Hedge
Secretary

ALDWYCH CONSTRUCTION LTD

Building and Decorating Contractors
All needs provided throughout
North West Essex • East Herts • South Cambs

**'Proper Work at
Proper Prices'**

PERIOD & MODERN

For estimates: Tel 01279 816701
Mob 07976 050802 Fax 01279 812656

23/25 Lower Street, Stansted CM24 8LN

J R JOHNSTON C&G RFS Qualified Tree Surgeon

Fully Insured



Pruning
Dismantling
Hedge Trimming

Trees/Shrubs supplied & planted
Contract Maintenance

Tel 01920 821595

REFLEXOLOGY & MASSAGE

Susie Smith
IIHHT, VTCT Qualified

07843 478 237

info@susiesmithreflexology.co.uk

www.susiesmithreflexology.co.uk

EDDIE HO



Fish & Chips
BBQ Chicken
Southern Fried Chicken
Pukka Pies
Beef Burgers

Station Road, Stansted
01279 817307

HELPLINE

07704 553727

If you have a **PROBLEM**
or are in need of
ASSISTANCE

Monday - Friday
9.00 am - 4.00 pm

Stansted's voluntary community care service

MEMORIALS

Direct From Stonemason

J. Day & Son

Station Road, Bishop's Stortford
FOR BROCHURE & PRICES
OR A HOME VISIT CALL

0800 7837521

Bishop's Stortford 01279 654555
Saffron Walden 01799 513110
Edmonton 0208 807 3712



**PETE BAKER'S
CRUSTY JAZZERS**

Telephone: 01 279 814865
Mobile: 07 816 124320

CARERS UK

Uttlesford District Branch

"Caring about the Carer"

Carers are the biggest provider of
health and social care in the UK.
We offer help, support and advice
*If you would like to know more
about us, call us now on:*

01371 875810

Email: uttlesford@carers.entadsl.com
46 High Street, Dunmow CM6 1AN
Registered Charity No. 246329

Computer Users! Mac & PC Repairs

software & hardware upgrades
computer repairs

call:

Alan Horsley

Tel: 01279 835475



No call out fee ~ Viruses eradicated
Low cost antivirus ~ No job too small

J.D.W.

GAS HEATING SPECIALIST

Boiler Servicing
Fast response to breakdowns
of Central Heating
& all gas appliances

Carbon Monoxide Testing
Boiler Replacements
General Plumbing
Cooker Installations

24 Hour Call Out
Gas Safe Registered
Ex. British Gas

Contact Julian
1 Church Hill Corner
Tel 01279 816083
or 07967 366585

Crystal Clear Pond Services Pond Cleaning & Maintenance

Regular cleaning, maintenance
and servicing *plus* supplying
and fitting all pond equipment

- Pond Cleaning
- Pond Restoration
- Water Features
- Pond Supplies

For a clean and healthy
pond all year round.
Free estimates & quotes

01279 812011
07999 536580

www.crystalclearponds.co.uk
info@crystalclearponds.co.uk



NEW LOOK UPHOLSTERERS

Antique & Modern Furniture
Upholstery Specialists

Domestic / Commercial
Hotel & Contract Work
Full Repair Service

Wide range of fabrics
and accessories
French Polishing

Free quotes - Collection & Delivery
Professional Workmanship
Excellent Prices



01279 816222

info@newlookupholsterers.co.uk
www.newlookupholsterers.co.uk

34 Stoneyfield Drive, Stansted CM24 8PA

IN MEMORIAM

DESMOND HUGH ELSMORE

1926 - 2009

Des was born in Totnes, Devon, the second of three children. His father Albert was a retired Naval Petty Officer, who had seen action in World War I and who would be recalled for active service again in World War II. His mother's name was Nellie. In the late 1930s the family moved to London as Albert looked for work. Des attended St Andrew's Church, Lambeth with his parents. Here he was a choirboy and won prizes of a Bible and prayer book for his knowledge of Scripture, treasured possessions he kept throughout his life. To help the family Des took his first job at the age of 12. After school and on Saturdays he collected and delivered laundry for a launderette on Meymott Street, near Blackfriars Bridge. People tipped the youngster generously, bringing his earnings to £2 a week.

With the outbreak of war Des, his older brother Victor and younger sister Joan were evacuated to Devon. Back in London the family were bombed out twice during the Blitz. On one of these nights, Des was asleep with the blanket over his head when the glass from the window was blown in over his bed. He also remembered the night of 29th December 1940, watching the fires raging about St Paul's. Towards the end of his life Des admitted how traumatised he had felt by the sights he had seen during the bombing.

At the age of 16, Des was serving in the Home Guard with Victor. Around this time he applied for officer entry to the Royal Navy at Greenwich. He passed every test except eyesight. This was because as a baby he had fallen in the fire and lost the sight of one eye. Undeterred, once he reached 17½ in 1944, Des joined the Navy as a rating. It was either that or become a 'Bevin Boy', going down the pit. Again, due to his eyesight, Des was not passed fit for service at sea but was assigned to the Fleet Air Arm, trained as a Naval infantryman and posted for an assault in the Pacific. However, by the time he arrived in the early months of 1945 the Americans had captured the target. Des was re-assigned to preparing survival equipment, receiving the thanks of a bailed out airman whose parachute he had packed. Needless to say the American kit was best. Des, by now a Naval Airman Class 1, was sought to help with problems and demonstrate using the equipment.

Although his education was disrupted by the war and leaving school early to help support his family, Des was a very able manager, with an aptitude for accounts. After the war he became a NAAFI (Navy, Army and Air Force Institutes) manager. As such he travelled widely both in this country and abroad, often chosen to tackle challenging situations. In the Suez Canal Zone during the insurgency of 1951 (sic - not 1956), Des had some memorable experiences. Arriving alone and unarmed at one of his clubs, on the Great Bitter Lake, he found six Egyptians who had broken in. Despite being Muslims they were helping themselves to drinks. Des decided to shake them by the hand and join in a drink. Another of those times when Des faced a tricky situation was in a Dakota flying over the Libyan Desert. On his way to Tripoli, he was a fellow passenger of one or two brass hats. One of the two engines stopped. It was not a good place for a

forced landing and the brass hats looked queasy. Fortunately the pilot was good and managed to fly them to their destination.

Des met Dawn in December 1958 in Bombay, aboard a ship bound for England. He was returning from New Zealand; she was with her parents, who lived in India. They danced and it didn't take long for Des to decide that this was the girl for him. They married in June 1959 and Mark was born in 1963. When Mark was just one, the family emigrated to Sydney, Australia, but returned only a year later following the deaths of both of Dawn's parents within six months.



In 1971 the family moved to Stansted from Poole in Dorset. Des was the NAAFI manager at what was then RAF Debden. After a few years, Des finally left the anti-social pressures of NAAFI. Various jobs followed until he was forced to give up work at the age of 57 due to an injured back. Inactivity was difficult for him - like his father before him Des always worked hard at whatever his hand found to do, in order to provide for Dawn and Mark, to whom he was devoted. He also relaxed of course - in his younger days he played the piano and church organ and always enjoyed a drink.

A tough, self-reliant man, who had experienced much in life, Des could be difficult but was always friendly to people. A lifelong Anglican, he made a commitment to God at the age of 11. Both Des and Dawn regularly attended St Mary's Church and then St John's for around 30 years and knew many local people. After Dawn died, Des increasingly turned to God, praying and reading scripture daily.

As Des grew older he suffered increasingly from poor health, which got him down after such an active earlier life. However, he was cheerful with those he saw and doctors would remark on how pleasant he was to deal with. In mid 2008 Des developed breathing difficulties. These progressively worsened until any exertion left him breathless. But before this happened, Des and Mark went on a cruise in the Eastern Mediterranean. It was a long-held desire to go on one last overseas trip and to see the Holy Land - Israel.

In the last two years Mark lived with Des and grew much closer to him, understanding him better. When it came, the end was sudden, but not wholly unexpected. It was God's mercy that Des was spared further suffering. He is now reunited with his wife Dawn, whom he missed so greatly.

Mark Elsmore

Back to Basics Pilates Class

with Hazel Williams Registered Osteopath



Mondays 8 - 9 pm & Saturdays 9 - 10 am

The Quaker Hall, Chapel Hill, Stansted.

To book one of the limited spaces available or find out more please call Hazel on **01279 813371** or **07973 409675**

Please wear loose clothing and bring an exercise mat.

Free introductory class throughout this month

Do-It-4U General Handyman

Home & Garden Repair, Care & Maintenance

- ◆ Plumbing, Electrical & Carpentry Services
- ◆ Drain Blockages Cleared
- ◆ Gardens Tidied & Maintained
- ◆ Hedges & Topiary Trimmed & Shaped
- ◆ Fences Erected & Repaired
- ◆ Gutters Cleaned, Repaired or Replaced
- ◆ Sheds & Other Sectional Buildings Erected

Tel **01279 814411** Mobile **07774 877320**

Why live with your aches and pains?

Hazel Williams is one of the few practitioners who specialises in both structural and cranial osteopathy to treat a wide range of patients from babies to the elderly, from the immobile to athletes.

Her treatment can help with: *back, neck, joint, arthritic and muscle pain, trapped nerves, sports injuries, headaches and migraine.*

She also incorporates acupuncture to aid pain relief and provides specially formulated pilate classes to help with rehabilitation.

Her aim is simple... **to give you continual relief from pain wherever possible.**

To claim your **free assessment consultation*** call Hazel Williams at her surgery on **01279 813371**

61 Blythwood Gardens, Stansted, Essex CM24 8HH
osteopathy@hazel-williams.co.uk

*Hazel Williams reserves the right to remove or change this offer at any time without prior notification.

the osteopath

HIGH HOUSE Montessori Day Nursery (opposite Stansted Airport Terminal)

- Accepts children from 3 months to 5 years
 - Small class ratios, with qualified staff including our qualified Early Years teacher Vanessa Callan Bsc Hons, PGCE
 - Beautiful farmland surroundings
 - Traditional values and structure
 - Flexible hours according to needs of child and parent
- Full day care available 8 am to 6 pm
52 weeks a year

To arrange a visit please call: **01279 870898**
www.HighHouseNursery.co.uk

MILLWAY

OFFICE SUPPLIES & ART AND CRAFT SUPERSTORE
CHAPEL HILL, STANSTED MOUNTFITCHET, ESSEX CM24 8AP
TEL: **01279 816659** ~ www.millwaystationery.co.uk

STOCKISTS OF HORNBY, LEGO, MECCANO, AIRFIX, DMC, ANITA'S CRAFTS, ENCAUSTIC ART, FIMO, SCRAPBOOKING, WINSOR & NEWTON, DALER-ROWNEY, RUBBER STAMPING, FABRIC PAINTS, FACE PAINTS, HELIUM BALLOONS, GREETING CARDS & WRAP.

**AT OUR SUPERSTORE WE HOLD IN STOCK
OVER 30,000 PRODUCTS**

ALL YOUR STATIONERY NEEDS FOR THE HOME AND OFFICE
INKJET CARTRIDGES, LASER TONERS, CDRs, PAPER, ENVELOPES, FURNITURE, FILING PRODUCTS, FILOFAX, PARKER.

OPEN:

MON-FRI 8.30am—5.00 pm SAT 9.00am—1.00pm
FREE PARKING

John Wilson
Manufacturing Jeweller
(established since 1978)

Gold - Platinum - Palladium - Silver

- Wedding / engagement Rings
- Remodelling clients jewellery
- Old Gold bought
- Bespoke jewellery created



**Home Appointments
By Arrangement**

Mobile: **07900 931 910**
Workshop: **01279 647 878**

Email: info@jewellerybyjohnwilson.co.uk



BAA seeks further delay on second runway inquiry

SSE condemns as outrageous and unacceptable

SSE has condemned as outrageous a request by BAA for the Public Inquiry into its plans for a second Stansted runway to be put on hold for what could turn out to be a period of three years. The proposal was made by BAA in a letter sent on 20th May to the Secretary of State for Communities and Local Government, Hazel Blears, copied to SSE. BAA has asked that the inquiry be deferred pending the outcome of its appeal against the Competition Commission's ruling that it must sell Stansted and until such time as any future owner's intentions are made clear. If BAA's wishes were to be granted, it could mean that a final decision on whether Stansted should be allowed a second runway may not be known until the end of 2014. This assumes an extended period of sale is allowed to BAA followed by an 18 month Inquiry, six months for the Inspector to produce his report and six months for a decision by Ministers.

BAA delay tactic a callous disregard for community

It is now almost seven years since the spectre of major expansion of Stansted was raised by the Government (July 2002). SSE believes that it would be wholly unacceptable for the prospect of another five years of blight and uncertainty to hang over local families, many of whom are threatened by compulsory purchase, inhibiting major life decisions such as whether to move home and which school to choose for their children. Natural justice dictates that BAA should not be allowed to keep its options open indefinitely at the expense of the local community. BAA should either proceed with its planning application now or withdraw it altogether. SSE's preference is for the application to be withdrawn but, since BAA is refusing this course of action, the Government should insist that the Inquiry proceeds forthwith. An early Public Inquiry would be a lesser evil than the prospect of five more years of uncertainty.

SSE has called on the Government to put pressure on BAA to withdraw its second runway application in the wake of the airport operator's appeal against the Competition Commission's ruling that it must sell Stansted.

Strong demand for noise guide

Complaining about aircraft noise has been made clearer and easier with publication by SSE of a practical guide. More than 20,000 copies of the guide 'Concerned about Aircraft Noise?'. "SSE follows up every complaint made to BAA via the SSE website and in one-fifth of cases these produce useful information to help us press the airport to improve its system of noise reduction and track keeping. We do however encourage people to complain responsibly not frivolously so as to maintain the integrity of the system," says Martin Peachey, SSE's noise spokesman.

Community efforts pay off

A cheque for £1,601 was presented to SSE for its fighting fund by Duton Hill Community Association following the

highly successful Fun Day Sunday and Quiz Night. Maggie Sutton received the cheque on behalf of SSE from the Three Horseshoes landlord, Derek Connell. "We take the threat of major expansion at Stansted very seriously because of the direct impact it would have on the people of this village – but we're also very conscious of what it would mean for those further afield if the plans went ahead" said Derek.

Forthcoming fundraisers include the Birchanger Summer BBQ on 5th July. The event is in a garden setting and offers a full menu of grilled meats with veggie options, salads and puddings. Tickets are £15 and kids go free with advance notice. Music, marquees and a pay bar are among the attractions. Then in a change from the usual format, this year's runway ramble on the afternoon of Sunday 20th September takes the form of a Heritage Hike - a four mile circular walk around Molehill Green taking in many of the 35 historic properties threatened by airport expansion.

'Our Community – Our Responsibility'

Carol Barbone
Campaign Director
Tel: 07775 523091
Email: cbarbone@mx.co.uk



Stansted Conservatives will be holding one of their regular Pub Evenings on Friday 3rd July at the Rose and Crown, Bentfield Green, from 8.00pm onwards. Do also join us for a Summer Drinks Party on Sunday 5th July at The Brambles, St John's Road, starting at noon. Tickets £6 each and more details from Bridget on 814440 or Joan on 814854.

Christine Stiles



Do you have a love of
Literature in English?
An established class would like to
welcome new members

Where Free Church Hall, Chapel Hill, Stansted
When Wednesdays 9.30 – 11.30 am
30 weeks (three terms) from 16th September
What 'Writers in Context'
The lives, works and worlds of:
• Anthony Trollope
• T S Eliot
• George Orwell
• Doris Lessing
Cost £30 per term

For further details including booklist and full dates
contact Judith Moss - Course tutor 01279 813998
or e-mail jmossatpo@waitrose.com

Skin Deep Beauty



- ◆ Manicures & Pedicures
- ◆ Waxing
- ◆ Facials
- ◆ Eyelash Tinting
- ◆ St Tropez Tanning
- ◆ Inchloss Wrap
- ◆ Gift Vouchers Available
- ◆ Daytime or Evening Appointments

01279 814849 pjmckinlay@aol.com 07989 070445

27 Oziers, Elsenham CM22 6LS



NEWMAN'S LICENSED APHC MEMBER

HOME SERVICES LIMITED

Plumbing • Heating • Electrical

Tel/Fax: 01279 814437 Mobile: 07831 233681

A.C. WRIGHT

BUILDING CONTRACTORS

Orchard House, 5 Brewery Lane
Stansted, Essex CM24 8LB

Tel. Bishop's Stortford (01279) 815759
Fax. (01279) 812484
Mobile 07974 989938



Taylor Computer Services (Stansted)

On-site Computer Maintenance/Repairs for Home or Business

DON'T BE RESTRICTED TO OFFICE HOURS, I CAN VISIT YOUR HOME OR OFFICE DURING THE DAY, EVENINGS OR WEEKENDS AT A TIME TO SUIT YOU.

Wireless Networking and Broadband Setup, Data Transfers, Hardware & Software Installation, Virus & Spyware Removal & Protection, New PC Setup & Training

Call Derrick on 01279 816418 ~ 07926 289749
Email: info@tcsstansted.co.uk

ALBURY ELECTRICAL SERVICES

LOCAL FAMILY BUSINESS Est 1984

All Electrical Installations
Electrical Inspection, Testing & Certification
of fixed wiring & portable appliances

NICEIC APPROVED. ALL WORK GUARANTEED
FREE ESTIMATES AND ADVICE



Tel: 01279 771510 or 01279 652588
info@alburelectricalservices.co.uk
www.alburelectricalservices.co.uk

Fabrications

is the local company for all soft furnishings,
made from our fabrics or your own.
Wallpapers, tracks and blinds also supplied.

For free advice and measuring service call

Sue 01279 777465 or Carol 01279 777480



MOBILE HAIRDRESSING



By
Emma Russell

Ten years experience ~ Flexible Hours

Tel: 07789 760 788 or 01279 817018

FAMILY NEWS

13 Chapel Hill, Stansted CM24 8AB

Newsagents ~ Tobacconist ~ Confectioners
Sweet Picks ~ Cards & Toys ~ Fax ~ Photocopying
Printing ~ Laminating & Scanning ~ Phone Top-Ups
Electricity and Gas Top-Ups (Cards & Keys)
Utility Bills & Council Tax Payments
We do Home Deliveries & Shop Saves

OPEN: Mon - Sat 5.30am - 6.15pm; Sun 5.30am - 4.30pm

Tel / fax: 01279 813485

RAY THE PLUMBER

Need a reliable Plumber or Tiler?

...call RAY 07957 323686

Efficient service
Reasonable rates

City and Guilds 6129 & Gold Trowel trained



Where customer
service and attention
to detail are never
compromised

Where bright ideas are realised!

Tel: 01279 657769 Fax: 01279 503151

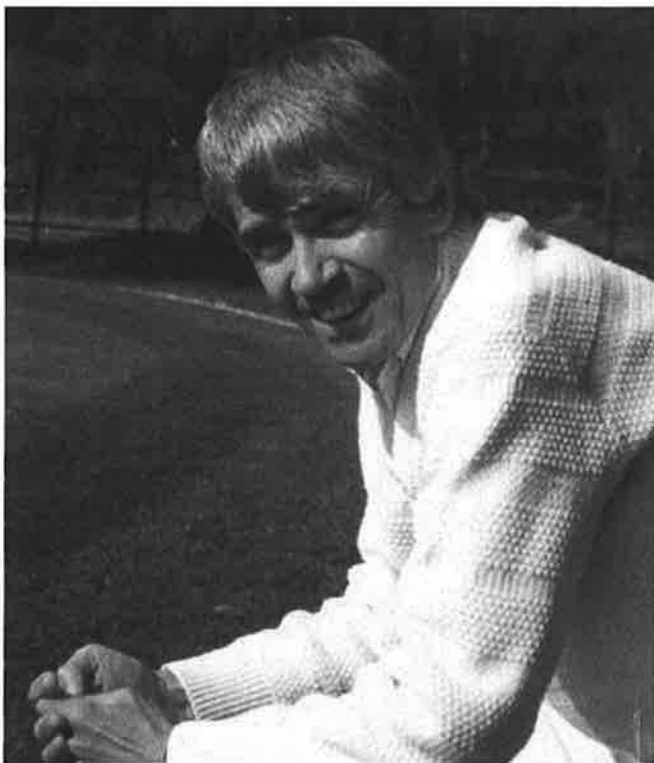
Email: Info@copyzone.co.uk Web: www.copyzone.co.uk
Unit 3 Southmill Trading Centre, Southmill Road, Bishop's Stortford CM23 3DY

IN MEMORIAM

RICHARD CROSBY (November 1938 – April 2009)

Richard Crosby, an only child, was born to Richard Henry Crosby and Elizabeth Maude (nee Gilbey) in November 1938 when the Second World War was brewing. The family lived at Start Hill in a tiny cottage which had in earlier times been a toll cottage. Richard went to primary school at Birchanger; he was a country boy at heart and could identify most British birds. As a non-swimmer Richard had many dangerous adventures with his friends on the deep Start Hill sandpit lake, using an old water tank as a boat. Other boys would shoot at them with catapults to prevent them from landing their craft, but they would somehow manoeuvre the tank to another part of the lake in an attempt to land there, only to find their attackers were now preventing this too.

Richard's father, a British Railways employee, was able to take the family to distant UK places for holidays, such as Scotland or Cornwall. Richard loved to see the steam trains, especially the Flying Scotsman, and the Mallard class trains, and one of his favourite outings as a boy was to go to Liverpool Street station train spotting for the morning, while his mother was able to go to the London shops in the afternoon. During his childhood Richard had been fascinated by some young men and women that he saw playing tennis at Cricketfield Lane in Bishop's Stortford, after that he longed to learn to play tennis, and eventually he did. Richard played at the Stansted Tennis Club, but as he never had a strong physique, he wasn't able to deliver a massive serve, or 100mph shots, but he was a crafty player relying on placing the ball and removing pace.



At eleven he joined the Secondary Modern School at Stansted where he learned to play chess; at 14 he moved on to Saffron Walden Technical and Modern School. He joined

the Chess Club at Bishop's Stortford as a young man, and played matches for them, and for Hertfordshire.

After his schooling, he joined Skyways wages department, but soon moved on to train as a draughtsman at Auto Cam and Tool works, where he stayed for many years. He married Carole in 1965 and had sons in 1970 and 1973.

In 1973 he joined the architects Stanford Eatwell & Associates, eventually becoming their Company Secretary. At 54 he became the proud father of a baby daughter. Richard was generally a modest man but he had a keen sense of humour, and very often wore a twinkle in his eye. In 2005 he learned that he had been suffering from coeliac disease; he never really responded to the gluten free diet, and he died in Barts hospital in April 2009.

Carole Crosby



STANSTED MOUNTFITCHET U3A

Stansted Mountfitchet U3A now has over 100 members and our committee is working hard to establish the group. We have two computer classes starting on 1st July: Beginners 1.00pm-3.00pm and Intermediate 3.00pm-5.00pm. These will be at the Peter Kirk Centre and run for five weeks. These are strictly for members of the U3A at a cost of only £31. The following outings have also been arranged:
September 15th - Jersey Boys in London
Sept/Oct (exact date TBA) - in audience for recording of ITV's Loose Women.

The next open meeting will be held at 2.30pm on 16th July in St John's Church Hall – please note change of venue as the Day Centre is not large enough for our expanding numbers. The speaker will be Peter Sanders from the Stansted Mountfitchet Local History Society. Please come along if you would like to find out more or contact one of the following committee members: Christine Loveday 817587; Cherry Venn 817140 or Jean Pyatt 657807.

Cherry Venn
Chairperson

GARAGE TO LET **(lock - up)**

*Small ~ secluded ~ well ventilated
close to Stansted station*

Rental only £25 per month

Please telephone 813458

THE
POCKNELL FOOD CO
FINE DINING AT HOME

The Pocknell Food Company provides
an exclusive catering service.

Whether it be a dinner party, a corporate
event or just an excuse not to do the cooking
we can help. We'll even do the washing up!!

Our range of fine foods is also available at
local farmers markets.

Please contact Oily on:

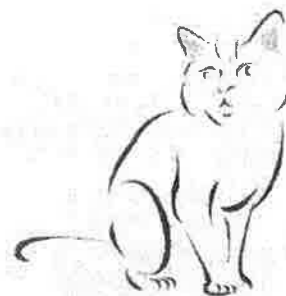
01279 816215 or 07876 742613
Email pocknellfood@btopenworld.com

COOL 4 CATS ORCHARD CATTERY

Established 12 years

Orchard Cottage
Bird's End
Rickling Green
Saffron Walden
CB11 3YW

01799 543450
(answerphone)



Small enough to Care



Stansted & Saffron Walden
Chauffeur Services **01279 816901**

Business and Airport Transfer Specialists

Audi A6 Fleet with Sat Nav
Business Accounts
Female Drivers
Executive Taxis & Chauffeurs
Stansted - Heathrow fr £80.00
Stansted - Gatwick fr £85.00



Highest standards in luxury private hire and executive
taxi services available locally

Book online @ www.stanstedchauffeurs.com
email: enquiries@stanstedchauffeurs.com

All major credit cards accepted

Mitchell School of Dance

Mrs Mitchell LISTD Dip AISTD AES Dip
Fully qualified and registered teacher

*Dancing Displays Examinations
Choreography National Competitions*

Classes at:

St. John's Church Hall, Stansted
St. Mary's Church Hall, Birchanger

Tel: 01992 812781



The
kings arms
Hotel

Open all day, every day
Non smoking Accommodation
Food served daily
Traditional Sunday Roast 12 - 4 pm
Beer Garden
Regular Entertainment - Quiz Nights etc
Sky Sports

STATION ROAD STANSTED
01279 812948 or 01279 815699
kingsarmsph@btconnect.com
www.kingsarmshotelstansted.co.uk



Stansted Evening Women's Institute

WI members have been very busy during the last two months. Seven members represented us at the County Quiz evening when the first round for this area was held at Ugley. Although they didn't win, they weren't last either (much to their relief)! Winners then had to go on to other rounds to be held later in the summer.

The Spring Group Meeting held at Manuden was a real success with wonderful flower demonstrations by Nick Berden, who creates displays suitable for weddings and church festivals as well as for the home. He also has the gift of telling stories at the same time; who says flower arranging is only for ladies? Nick travels to Europe creating stunning displays and also runs a horticultural business.

The WI again did the catering for the Parish Council Reception in May and has been asked to repeat it next year, which we are pleased to be able to do as part of village events.

Our picture, taken during the lunch break, shows some of the members who attended the AGM at the Albert Hall in



June. About 6,000 women gathered for this event and caused quite a lot of interest to passers-by, especially tourists! The singing of 'Jerusalem' in this setting is always something to remember of the day. This year our Chair, Fay Mansell, is retiring after three and a half years; she has been a wonderful ambassador for our Movement. We were glad to hear that we are in the black as regards finance and that our Denman College is also just in profit. The College is open to non-members these days and has a wide range of courses throughout the year. It is also possible to stay there on a B&B basis and explore the area independently if you like.

Our speakers this year included Maureen Lipman, now starring in a 'A Little Night Music' in London. She entertained us with a Joyce Grenfell sketch and was the only one of us wearing a hat! Eve Pollard, the journalist (more commonly known these days as Claudia Winkleman's mum), was another excellent speaker. Our delegate was Bridget Gott who was voting on behalf of our WI and three other Institutes on this year's resolution calling for an increase in fund-

ing for the research in to bee health, in view of the accelerating decline in the UK honey bee population. One of our members is a bee keeper and has told us that they have lost quite a lot bees this year. There was almost a hundred per cent vote in favour of this. The meeting closed with the wonderful Richard Stilgoe and a performance by three of the Orpheus Centre Apprentices. The Orpheus Centre, in Surrey, was founded in 1998 and is owned and run by Richard Stilgoe for people with learning disabilities and aims, through music, to increase their confidence. They appear at events throughout the year, but appearing before 6,000 people at the Albert Hall must have been the biggest thing yet. Most of the audience were brought to tears by the sight and sound of these youngsters in wheelchairs singing and playing with such simplicity and enjoyment, accompanied by Richard Stilgoe, who must be their inspiration. What a way to end an already amazing meeting.

Our next meeting on 9th July in St John's Hall at 7.45pm - not quite so amazing - will be a garden party, we will hope for fine weather and we will drink Pimm's and eat strawberries and scones and even have a little country dancing! You are asked to wear a decorated hat if you come - and we do invite you to do so.



Judy Colliver, Secretary
812470
Brenda Ryan, President
812725



This month both the younger and older groups have been learning the story of the Three Billy Goats Gruff. The troll bridge in the story led on to a general theme of bridges and activities have included constructing different bridges from various materials in the classroom. The older group went out on a tour of the village to look at the bridges we have here in Stansted and were encouraged to think about what they are made of. In anticipation of a hot summer the playleaders created an indoor beach in one corner of the classroom and the children have greatly enjoyed making sand castles, making tyre tracks and burying vehicles and dipping their feet into the sand. They have also been learning several sea-related songs such as 'Yellow Submarine' and a twist on 'Ten Green Bottles' involving fish and greedy sharks.

If you are interested in a place at Rainbow Tots (age 18 months to two and a half years) please contact Tina South on 814371. If you are interested in a place at the pre-school please contact Gill Pursglove on 814701 for further information.



Isabelle Page
Rainbow Committee



AMANDA WELLS DESIGN

Offers a bespoke service for
curtains, blinds and
soft furnishings.

My service includes advice on
design, tailored towards your
home, and fabric sourcing
where required

Please contact me for a no
obligation quote on:

Tel: 07919 180432

info@amandawellsdesign.co.uk

Agapanthus

To Go.....

Floristry Designs
for

Events
*
Corporate
*
Retail

T: 01279 815415

M: 07896 813570

E: nikki.downing1@dsl.pipex.com

A&I Electrical

All Electrical
Installations and
Repairs

New Fuse Boards
and Rewires



Free estimates

Tel 07711 202423

Nick Shutes

Painting and Decorating Ltd

For high quality
interior and exterior redecoration
& associated minor repairs
contact Nick Shutes
for a no obligation quotation

01799 542385

07885 778213

Based in Ugley

CHIROPODIST & PODIATRIST Stansted

and Bishop's Stortford

- ◆ Orthotics
- ◆ Diabetic Foot Care
- ◆ Evening & Saturday Clinics
- ◆ Routine Treatment

R Handford & Colleagues
H.P.C. Registered

36 Lower Street, Stansted

Also at 16 Hockerill Street, Bishop's Stortford

01279 652249 info@feet.org.uk

www.feet.org.uk

Selina Rankin Garden Design
in partnership with
The Landscape Concept

**A complete Garden Design and
Property Maintenance Service**

- Paving and Patios
- Land Clearance
- Hedge Trimming
- Plants and Planting
- Decking and Pergolas
- Lawn Care and Maintenance
- Tree and Shrub Pruning
- A full garden design service
- Professional Project Management
- Fencing
- Turfing
- Border Care

For further information please contact:

Selina Rankin Tel: 01279 813388
info@srgardendesign.co.uk

Kevin Glogner Tel: 0750 668 9302
tconcept@tiscali.co.uk



Registered Charity No. 1094702

**NFSH Accredited Clinic
for Spiritual Healing
(GMC Approved)
and other
Complementary Therapies**

**Quaker Meeting House
Chapel Hill, Stansted**

**Wednesday Evenings
7.30 - 9.30 pm**

**For appointments call
01799 550094**

www.saffronaccreditedclinic.co.uk

CHIMNEYS
Guest House



Exceptional standard of accommodation

ETB 4 Diamond Rating with Silver Award

All guest rooms have ensuite facilities

Free WiFi in all rooms

Open All Year

Iain & Selina Rankin
Chimneys

44 Lower Street, Stansted,
Essex CM24 8LR

Tel: 01279 813388

Email: info@chimneysguesthouse.co.uk
Web: www.chimneysguesthouse.co.uk

Stansted network

NEWS FROM YOUR LOCAL COUNCILS

WATCH OUT FOR THE PARISH PLAN QUESTIONNAIRE – ARRIVING SHORTLY!

At last the wait is nearly over. After considerable preparation including external advice, the questionnaires should be delivered to you by the end of the month (two per household). So take a cool drink in what, we hope, will be warm summer weather and spend a short time completing the questionnaire. If parts of it do not interest you or you have no particular views, don't worry - just complete as many sections or questions as you want. Rest assured, you will not be required to do so again at least not for a good many years, so please take some time to let us, and others, know what you think about where you live and what you would like to see happen in the near, or even distant, future.

It is not just desirable but essential to receive a high level of returns from all parts of the village. The strength and breadth of your views will help the Council to create a plan for the short, medium and long-term – a blueprint to follow in developing this as an inclusive community where people enjoy living and working. With the building of Foresthall Park over 1500 new residents will come to Stansted and Birchanger parishes – we want to make them feel part of our community. The views on any aspect affecting them will be helpful from those who have already moved into their new homes.

The greater the response, the stronger is the position of the Parish Council in lobbying and negotiating on your behalf with Essex County Council, Uttlesford District Council, the Primary Care Trust, the Police, the Rail and Bus Companies and other agencies who affect our lives or who may provide funding for projects. Please return the questionnaire by 20 July at the latest, either by using the pre-paid envelopes or by dropping the completed questionnaires in a collection box at the Library or by hand to the Parish Council Offices at Crafton Green. Once the responses have been analysed, the results will be made public and circulated to the following working parties: Health, Airport, Future of Stansted, Highways, Local Councils, Police, Rail, Bus, Communication, Open Spaces/Leisure/Sport, Education and Retailing. It is still not too late to join a working party. If you wish to do so please call the Clerk on 813214 or email parishcouncil@stansted.net. A draft plan will be published for consultation next year.

PLEASE HELP TO MAKE THIS PLANNING PROJECT A SUCCESS BY GIVING US YOUR VIEWS. EVERY QUESTIONNAIRE COMPLETED IN WHOLE OR IN PART WILL COUNT.

IMPROVING AREAS FOR PLAY AND RECREATION

The Council is critical of the standards in the play areas and in the whole area of recreational equipment. Parents are telling us that many other towns and villages have better and better-maintained recreational areas. The Council is determined to find ways to raise standards and create more imaginative surroundings which will appeal to a wider age group.

The immediate response of the Council will be to improve standards of maintenance in the play areas in terms of fences, surfacing and seats. However, it should be stressed that the safety of the equipment is inspected annually by RoSPA and any recommendations are implemented. If damage occurs at other times, once reported action is taken. Unfortunately it has to be said that there is an amount of vandalism, which sometimes may put children at risk (especially where broken glass is involved), as well as causing you expense to carry out repairs.

Three play areas fall within the remit of the Parish Council - Recreation Ground, Mountfitchet Green and Bentfield Green while Foresthall Park may add another facility. It is improbable that major changes could be carried out at all of these locations partly because of space constraints and partly because of funding issues, re lack of money. The likely candidate for a major rethink is the Recreation Ground given that Mountfitchet Green has the all-weather sports pitch and that Bentfield Green is too small. Cllr Tudor Owen is consulting interested parties with a view to producing recommendations. If you have ideas which you would like to be considered or have been lobbied by your children or teenagers, please contact Tudor by email on tudor@tudorowen.com or through the Parish Council (813214).

UPDATE, No. 7 BUS ROUTE

District Cllr John Salmon has given details (on page 19) of the new route for the No. 7 Bus, which omits servicing the Bentfield area of Stansted as from September 1st 2009.

In an endeavour to rectify this, we are holding a meeting with Rachael Price (Accessibility Planning Officer) and Nick Blackall (Local Bus Planning Manager) on Thursday 23rd July at 3 pm in the Stansted Day Centre, Crafton Green. At this meeting you can voice your concerns regarding this matter and bring to the attention of our visitors the great inconvenience this new route would cause, not only to passengers in the Bentfield area, but those also from

other parts of the village who wish to access the Surgery and the Shopping facilities on the Cambridge Road.

Please make every effort to attend this meeting as it is very important that we do not lose this facility in our village. If you have transport problems in getting to this meeting please contact Cllr Valerie Trundle on 813433.

THE WINDMILL – GOOD NEWS AT LAST

The Council has been informed by English Heritage that a grant of £112,000 has been awarded to Stansted Mill to enable the project to permit the cap to turn to be undertaken. This grant, together with other monies available should permit full maintenance works to be undertaken at the same time as the work on the cap. Updated specifications and estimates will now be sought. Once received and approved, a date can be set for the work to be undertaken. Hopefully these can be completed in time for a celebratory opening of the Mill for the new season in 2010.

PLANNING AGREEMENT – FOR INFORMATION ONLY

A list of cases is shown on page 20 where the planning enforcement team at UDC is currently investigating the merits of taking enforcement action. It should be stressed that action will not be taken in all cases.

Finally, the number of cases under consideration across the whole of Uttlesford District is very large. With only a small enforcement team to cover all UDC's responsibilities, it may take a long time until action is taken especially if the decision is contested or formally appealed.

SUMMER OPENING AT THE YOUTH CENTRE

With the costs of opening the Youth Centre being funded by Essex County Council for thirty-seven weeks a year, it has not been possible for the centre to open in the summer holidays.

The Parish Council hopes that this can be changed this year and is offering towards this summer on a trial basis to contribute 50% (approximately just over £1,000) towards the cost of opening. If the advantages of providing activities for young teenagers proves of benefit to the community, then Essex County Council will be pressed to fund the additional weeks from next year.

HIGHWAYS – LAST MONTH'S REPORT

It seems there was some confusion regarding our report on Grove Hill in last month's Link. No firm decisions have yet been taken, and any waiting restrictions that are proposed will be subject to public consultation through Essex County Council. We are awaiting details of a trial scheme for Grove Hill and Lower Street.

PARISH COUNCIL MEMBER CONTACT INFORMATION

Catherine Dean	813579
Gaye Ellington	813933
Jo Freeman	812524
Bridget Gott	814440
John Hudson	814489
Peter Jones	813252
Janice Loughlin	812346
Tudor Owen	812825
Ruth Rawlinson**	814222
Jonathan Rich	813112
John Salmon	814789
Dan Scott	815098
Geoffrey Sell *	815925
Bill Stiles	813172
Valerie Trundle	813433
* Chairman	
** Vice Chairman	

DATES OF COUNCIL MEETINGS

July 8	-	Full Council
July 22	-	Finance
July 29	-	Full Council

Members of the public are welcome to attend all Parish Council meetings, and may address the Council on any relevant issue at the start of Full Council meetings. These comments are noted but no discussion is entered into. Meetings are held in Crafton Green House at 7.45pm unless otherwise stated on the agenda. Agendas are posted on the Parish Council's website www.stansted.net under Publications.

NEWS FROM UTTLESFORD D.C.

From Cllr Geoffrey Sell

Challenging times for politicians

Politicians have traditionally not benefited from high public esteem. In a recent survey only traffic wardens and second hand car salesmen did worse. The scandals concerning MPs expenses mean that the public image of politicians has probably taken a battering from its already beleaguered position. My concern is that local politicians will be tarnished with the same brush as any other politician. Ever since I have been actively involved in politics which is now almost forty years I have been met with comments such as politicians are all the same and you are only in it for what you can get out of it. I didn't believe these comments then, and I don't now. Most local councillors that I know irrespective of party are involved in politics for the right reasons. Some may have strong political views- others are motivated to stand because of a particular issue for example, expansion of Stansted Airport. For the majority though it is interest in the community in which they live.

Many people may only have a vague idea on what a councillor does. Yes they realise councillors attend meetings some of which may be quite boring. This requires reading a lot of preparatory papers. Councillors are not only decision makers but their main role is to act as a representative of the people that live in their ward.

This requires acting upon their concerns and trying to resolve issues. It is very rare that I do not have case work to deal with. District Councillors need to work closely with Parish Councils. My fellow councillor for Stansted North John Salmon and myself regularly attend meetings of Ugley Parish Council. We also play an active role on Stansted Parish Council.

All councils are required to appoint an Independent Remuneration Panel which determines councillor's allowances. Uttlesford's panel is made of three individuals drawn from Anglia Ruskin University, the Ministry of Defence and Mid Essex Primary Care Trust. When deciding allowances the Panel takes into account a public service discount of 35%. It believes that the commitment per week to fulfil the ordinary duties of a councillor is 65 days per annum. I have never quantified the amount of time I spend on council business but it is quite considerable. I am a member of two of the three Policy Committees, Vice Chairman of the Scrutiny Committee and a member of the Stansted Airport Advisory Panel. I also represent the Council on the Board of North West Essex (Business Services Ltd) Where perception of politicians is not high it becomes more important for politicians to be transparent. I am pleased therefore, that Uttlesford on its website has details of the allowances claimed by councillors last year. All councillors receive a basic allowance of £5020. Those councillors who have positions of responsibility such as the Leader of the Council and committee chairs are also entitled to a special responsibility allowance. In addition councillors can claim for mileage expenses. My allowance plus mileage expenses for 2008-09 came to £5046.96. For the amount of work involved I believe this is fair and not excessive. Earlier this year, I supported the proposal that the Council should publish the Register of Interests that each councillor has to sign when elected. This allows the public to see for example what organisations a councillor belongs to and the source of their employment.

County Council Elections

I have always been a great believer in joined up government. This means all tiers of local government parish, district and county working closely together. I should like to congratulate Cllr Ray Gooding on his re-election after a hard fought contest. Commiserations to Cllr Alan Dean who I know worked very hard during the campaign. For the last four years I have a good working relationship with Cllr Gooding which I am sure will continue.

From Cllr John Salmon

Change in Bus Service

I thought that I should bring to your attention that the people living in the Bentfield End & Bentfield Green area will lose the No. 7 Bus. It has been proposed that from 1st September 2009 the No.7 bus will turn right from Silver Street down Chapel Hill to the Mountfitchet Estate, then follow its old route to the airport, cutting out Takeley on its return trip round the countryside to Stansted. It will then go to Bishops Stortford via Birchanger and Herts & Essex Hospital to the Interchange. Therefore anybody travelling from

Mountfitchet Estate to the Doctors' Surgery will have to walk from Chapel Hill. The timetable appears below for your information.

Mondays to Saturdays				
Bishops Stortford, Interchange	0639	0749	49	1849
Bishops Stortford, Herts & Essex Hospital	0646	0756	56	1856
Dunmow Road, Nags head	0648	0758	58	1858
Birchanger, Bradley Common	0654	0804	04	1904
Stansted Mountfitchet, Chapel Hill	0659	0809	Then 09	1909
Stansted Mountfitchet, Maltland Road	0701	0811	at 11	1911
Stansted Mountfitchet, Lower Street	0703	0813	these 13	1913
Elsenham, Memorial Hall	0708	0818	mins 18	Until 1918
Elsenham, Rail Station	0709	0819	past 19	1919
Honham, Church	0714	0824	each 24	1924
Henham, Woodend Green	0716	0826	hour 26	1926
Henham Green, Vernon Close	0718	0828	28	1928
Elsenham, Crown	0721	0831	31	1931
Elsenham Industrial Estate	0725	0835	35	1935
Molehill Green, Elsenham Road	0727	0837	37	1937
Stansted Airport, Coach Station	0732	0842	42	1942

Stansted Airport, Coach Station	0649	0739	0849	49	1849
Molehill Green, Elsenham Road	0654	0744	0854	54	1854
Elsenham Industrial Estate	0656	0746	0856	56	1856
Elsenham, Crown	0700	0750	0900	00	1900
Henham Green, Vernon Close	0703	0753	0903	Then 03	1903
Henham, Woodend Green	0705	0755	0905	at 05	1905
Henham, Church	0707	0757	0907	these 07	1907
Elsenham, Rail Station	0712	0802	0912	mins 12	Until 1912
Elsenham, Memorial Hall	0713	0803	0913	past 13	1913
Stansted Mountfitchet, Lower Street	0718	0808	0918	each 18	1918
Stansted Mountfitchet, Maltland Road	0720	0810	0920	hour 20	1920
Stansted Mountfitchet, Chapel Hill	0722	0812	0922	22	1922
Birchanger, Bradley Common	0728	0816	0928	26	1926
Dunmow Road, Nags head	0732	0822	0932	32	1932
Bishops Stortford, Herts & Essex Hospital	0734	0824	0934	34	1934
Bishops Stortford, Interchange	0741	0831	0941	41	1941

CONTACT US!

Clerk – Ruth Clifford
 Admin Assistant – Anne Court
 Phone/Fax: 01279 813214 – 10am – 1pm
 E-mail: parishcouncil@stansted.net

OTHER CONTACTS

Uttlesford District Council Members

Alan Dean Tel: 01279 813579
 Email: cllrdean@uttlesford.gov.uk
John Hudson Tel: 01279 814489
 Email: cllrhudson@uttlesford.gov.uk
John Salmon Tel: 01279 814789
 Email: cllrsalmon@uttlesford.gov.uk
Geoffrey Sell Tel: 01279 815925
 Email: cllrsell@uttlesford.gov.uk
Essex County Council Member
Ray Gooding Tel: 01279 813103
 Email: cllrgooding@essex.gov.uk

Member of Parliament

The Rt Hon Sir Alan Haselhurst MP
 House of Commons, London SW1A 0AA
 Tel: 020 7219 5214 Fax: 020 7219 5600
 Email: haselhursta@parliament.uk

Police

PC Tom Bastendorff, Stansted Police Station,
 Hargrave Close Tel: 812211
 Essex Police non-emergency number 0300 333 4444
 Mobile phone carried by PCSO 07801 461666

Enforcement Team Monthly Live Case

Planning Enforcement cases that have commenced investigation

ENF ID:	Planning Enf Ref	Date Rec'd:	Action by:	Parish:	Case Status:	Address of Allegation:	Suspected Allegation/ Breach or Offence:
1202	ENF26109/B	20/01/2009	23/03/2009	Stansfeld	New Case - Waiting Investigation	Land to rear of Rochester Close	Houses constructed larger than permission
1587		13/05/2009	13/05/2009	Stansfeld	Under Investigation	High House Farm (OLD HOUSE) Off Parsonage Road	Approx 50 CBRS defined on front verge, over footpath. (TO ACCESS SITE GO ALONG LANE KNOWN AS DEAD MAN'S WALK). A office on the complex is suspected of serving the control centre.
081	ENF1213/07/B	07/12/2007	28/11/2008	Stansfeld	BCN / ENF Notice issued Waiting Compliance		Erection of summer house without planning permission on lawn to front of hall.
1444		02/03/2009	16/03/2009	Stansfeld	Under Investigation	Arclet House, M11 Business Park Forest Hill Road	Airport related parking
1520	ENF35106/B	21/02/2008	08/04/2009	Stansfeld	Under Investigation	Station Road	Airport related car parking
1012	ENF7257/08/A	25/11/2008	08/12/2008	Stansfeld	Under Investigation UT110783/07/FUL	Park House Eleanham Road	Non-compliance with conditions, being used as a dwelling
1317	ENF1176/05/B	27/07/2005	13/02/2009	Stansfeld	Under Investigation	Brookyard Plantation Eleanham Road	Roadways constructed, hardcore laid
1240	ENF4730/B	27/01/2009	08/06/2009	Stansfeld	Under Investigation	Station House	No extraction outlet fitted.
609	ENF143/08/A	25/07/2008	28/11/2008	Stansfeld	Under Investigation	Land at identified Sams Pond Lane security fencing	Storage of portable site offices/cabets behind 2m high
1573	ENF101/09/A	01/05/2009	07/09/2009	Stansfeld	New Case - Waiting Investigation	Arclet House (Unit 5) M11 Business Park	Airport Related Parking
608	ENF142/08/A	25/07/2008	20/11/2008	Stansfeld	Under Investigation	Land at rear of Pond Lane	'A' frame barn and land in front being used for storage of building materials.
1096	ENF280/08/B	11/12/2008	23/02/2009	Stansfeld	Under Investigation	4 Chapel Hill	Delicatessen being used as both deli and cafe.
872	ENF1217/08/B	18/09/2008	15/07/2009	Stansfeld North	Under Investigation	Rear of Searsons Building Cambridge Road	Airport related car parking

STANSTED IN BLOOM

I am writing on behalf of Stansted Parish Council to thank Diane Newland who undertook the judging of the gardens at the beginning of May. She was also kind enough to present the certificates and prizes at a ceremony on 16th May at the Free Church Hall in Chapel Hill. Diane commented on the amount of effort that residents put into the tending and upkeep of their floral displays, not just for their own benefit but also to be enjoyed by all those who are passing by or visiting Stansted.



The winning gardens were : The White Residence, The Laurels, 15 and 23 Cawkell Close, 25 and 31 Chapel Hill, 1 Stoney Field Drive, 12 West Road, 19 and 38 St. John's Road, 14 and 16 Stoney Place, 1 Croasdaile Road, 7 and 9 Bentfield Causeway. The picture below is of 15 Cawkell Close.



The Parish Council would also like to thank all the local shops and businesses who kindly donated goods or services as prizes, we really appreciate your wonderful support: Nikki at 2dive4, Richard Hanford the Chiropodist, Wilma at Boots Chemist, Paul at Flutes, Teresa at the Co-op, Jan and Steve for the fruit basket, Camille at Yeoman's, Jo at CK Men's, Peter at King's the Butchers, Lori at What's a name's, Sue and Sarah at Farm-house Deli, R & K News, YZ Minimarket, Vivienne at Yummy's and B & R Carpets.



Gaye Ellington

Stansted Tennis Club



Adult/Child Tournament

Unfortunately, this tournament, due to have been played on Sunday 17th May, had to be postponed due to bad weather. Once rearranged, the new date will be advertised at the club.

Dates for your Diary

Sunday 12th July 12.45pm Bristow Junior Doubles Tournament

Sunday 26th July 12.30pm Wilby Adult Tournament

Club Tournament and Hospital Cup

The draws for both of these competitions are now up on the club noticeboard. All entrants are encouraged to arrange their matches as soon as possible.

Coaching

The popular lunch-time adult coaching session continues throughout the year on a Friday between 2.00pm and 2.45pm. If you would like to come along and join in, please call Chris Hollis on 319155. You don't have to be a member of the club. Junior coaching with Chris Hollis continues as usual for all junior age groups. If you would like to find out more and get your name on the waiting list, please call Chris on the above number. Martyn Taplin 816386 continues to coach adults on Saturday afternoons at the club.

Used Tennis Balls

Priced at a reasonable £1 per tin of four balls, please contact Jan Hollis on 812073 or call at 105 Cambridge Road.

Club Playing Sessions

Members are encouraged to attend these open sessions at the following times:

Wednesdays at 10.00am and 6.00pm

Friday at 9.30am. Sunday at 10.00am

Contacts

For further information, please contact Richard Mott (Secretary) on 466348, Janet Hollis (Chairman) on 812073 or Daphne Lunnon (Membership Secretary) on 817574.

Chris Hollis

BRITISH RED CROSS WEEK 3rd-9th MAY

A very big Thank You to everyone who gave so generously this year to the annual appeal and to all the collectors who gave up their time to make this possible. A marvellous total of £1422.00 was collected in Stansted Mountfitchet. Thank you all on behalf of the Red Cross.

Christine Stiles
Tel: 813172



ANNOUNCEMENT

Tom and Isabelle Page would like to announce the arrival of Alexander Benjamin Page, born 15th May 2009, 10lbs 1oz.

Garry King Family Cycles

Bikes for all ages
New & Second-hand

- ✓ Spare parts
- ✓ Accessories
- ✓ Servicing
- ✓ Repairs

Mobile repair service

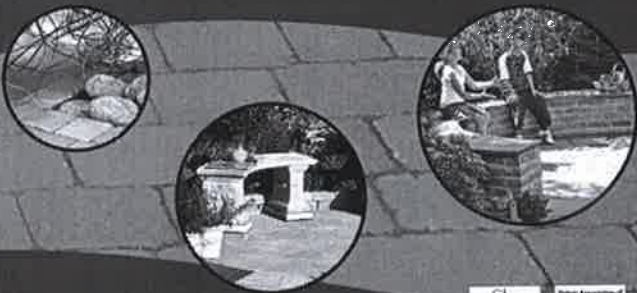
Free pick up & delivery on all cycles

"If you cannot come to me, I will come to you"

T: 01279 813114 M: 07789 536922

D. Honour & Son (Landscape) Ltd.

Your local Marshalls approved Installer
Brickwork Paving Fencing



Tel: 01279 813160

www.honourlandscapes.co.uk

The Old Brickyard, Epsom Road, Stansted, Essex CM24 8ST



Graham School of Dance



Outstanding tuition in Royal Academy of Dance Ballet & ISTD Modern Dance at the
QUAKER HALL, CHAPEL HILL, STANSTED
on Mondays, for children age 3+.

Classes in Tap, Drama and Musical Theatre for older children (+Adult Tap) held in Bishop's Stortford; classes also in Takeley & Sawbridgeworth.

Our talented pupils regularly win places with national dance schools and companies, gain excellent exam results and take part in dance festivals and professional pantomimes.

FOR FURTHER DETAILS & A FREE PROSPECTUS:

Telephone: 01279 654423

E Mail: info@grahamschoolofdance.co.uk

MAYFAIR PONDS LTD



- Specialising in all types of ponds & features
- Professionally designed, installed, restored or maintained
- Local company established since 1987 with excellent after care service

Tel: 01279 461052

(Answerphone)

Mobile: 07711 087 004

Want to get into shape?
Need to get fit?



Why not join the
**Mountfitchet Romeera
Leisure Centre**
from just **£28.80 a month?**

- Fully equipped gym
- A wide range of group training classes
- Personal training
- Crèche
- Free on-site car parking



01279 648580

Uttlesford Leisure Ltd



Leisure
Connection
plc

D C Poulton & Sons

Funeral Directors



High standards of service and attention to the public for over 100 years.

All branches have private chapels of rest.

Funeral can be arranged in all areas in the comfort of your own home if required.

Golden Leaves Pre-Paid Funeral Plans Available

Please note this company is not associated with any other with the similar name

2 Chapel Hill, Stansted 01279 813219
Clarks Lane, Epping 01992 572609
Chipping Ongar 01277 366009



494 (Stansted Airport) Squadron Air Training Corps

At the beginning of the year Cadet Corporal Adam Pinnock and I were chosen to represent 494 on the Normandy Camp 2009 as part of the 65th Anniversary of D-Day. On Wednesday 3rd June we made our way to the Essex Wing meeting point at Canvey Island. In total there were seven cadets from Essex, two girls and five boys, with one member of staff, Squadron Leader Penn. We loaded the minibus and started to journey to the ATC and ACF meeting point, Crowborough Training Camp. We arrived just after 9.00pm. After being signed in, we were given billets which would accommodate us for the night.

It was an early start on Thursday morning as the journey to Normandy began. All the cadets got onto our five coaches; Essex Wing were travelling with Northern Ireland and Scotland Region. At first it was nearly impossible to understand anyone! By 6.00pm local time we arrived at our campsite, a five minute walk from the coastal town of Arromanches. The campsite was a football field full of 12 and two man tents for over 600 cadets from all services. We were given tents and made our way to dinner. It was like an episode of Combat Chefs. The food was delicious, especially the dessert! I made my way back to the tent where I and the other girls that I was sharing a tent with spent some time getting to know each other.



At 6.00am we were woken to a bugle playing and a very long line for breakfast. It was then a quick change into Wedgwood blues, ready to leave by 8.30am. We paraded until 12.30pm when we made our way to Gold Beach, Arromanches. We were given the afternoon to visit the museum and beach, which was covered in vehicles and people dressed up in uniforms and as 1940s civilians. Five of us managed to get a ride around the beach in a half track which was amazing. We also spoke to many of the veterans, one of whom didn't get to see much of the beach on D-Day as he was inside a tank! We came back in the evening and experienced the lively street atmosphere of people dressed up outside cafes and bands playing.

The next day a few of us went to the Commonwealth War Graves Cemetery at Bayeux where we saw Prince Charles who said good morning to us! It was great to see the veterans, the applause they received, and their determination to stand for the ceremony. I am sure it brought a tear to everyone's eye. In the afternoon 80 cadets were selected to go to the televised Arromanches parade. The rain fell hard,

just like it did on 6th June 1944. Again we were all struck by the determination of the veterans, all in their 80's and 90's to



be there, to sing, and to share stories. That night we made our way back to England; we left at 7.00pm local time and we were at Crowborough by 5.00am. As we stepped off the coach we were greeted by Air Commodore Stewart, Commandant of the Air Cadet Organisation. We got a few hours sleep before breakfast and left Crowborough by 10.30am. I made some great friends from all over the country. It was an amazing experience; I am sure that it is one thing I will NEVER forget. If you are interested in joining in the fun call us on 01279 681559.

Cadet Corporal Sophie Stacey (age 15)
494 Sqn ATC



STANSTED MOUNTFITCHET WINDMILL

Summer is now upon us, so our thoughts are being focused on the Annual Fete which takes place on Bank Holiday Monday 31st August. It will again be a traditional village affair for which the Mill makes an appropriate backdrop. Last year we were pleased to have the help of 1st Stansted Scouts and some new helpers. This time our volunteer needs are no less, so if you can help on the day, please give a call on 647213 or 813124. Above all, book the date!

Another way in which residents can help is by becoming Stewards on open days. This is not an onerous task as we often have interesting visitors who are a pleasure to take round. We are able to give instruction on the technique of milling which in itself can be a revelation of the knowledge possessed by past generations. Stewards also assist by taking the entrance money and selling souvenirs.

STOP PRESS The great news is that English Heritage have at last given the Mill a sizeable grant. More of this later!

Derek Honour
Co-Chairman

Congratulations

Very best wishes to Mary Lane, a resident of Hargrave House, who celebrated her 100th birthday on 12th June.



The National Childbirth Trust
Supporting you to be the parent
you want to be



STANSTED BOWLING CLUB

Recently we have been focusing on increasing our support to soon-to-be-parents and new parents in our local area. Our Support Co-ordinator, Alice, has been hard at work making sure that everyone is offered our post-natal support, which is provided by some of our members, who are not health professionals but Mums and Dads who have been in the same boat and have experienced many similar situations. We want to reach as many parents as possible so we have been working to increase our visibility in the local area, and hopefully you will start to see posters up and newsletters in the clinics and surgery.

Our active committee is also updating our Experiences Register, which is a confidential list of experiences that people go through during and after childbirth. It is there for anyone who wants to talk through an issue they may have, with someone who has had direct experience. We want to be able to try and help everyone and that requires a very wide variety of issues. We hope to have this up and running by Autumn.

Our next Nearly New Sale is booked for 17th October so if you wish to sell, please contact Jane on 08442 436281, Option 2. We have booked in Yvonne Lorraine for more great family photos in October and have our fingers crossed for the weather for our Paddling Pool Party and our Teddy Bears Picnic, both in August. One of our members is raising money for the NCT by running the British 10km race in London on 12th July. Please help us support the NCT by making a donation at www.justgiving.com/donnabutler1. If you want any further information please contact us on 08442 436 281 or www.nct.org.uk.

Donna Butler
Chair/Co-ordinator

We are a few weeks into our season now and getting used to the changeable weather as usual. We have had reasonable success in getting some new members this year and welcome Rosemary Felstead, Peter Clements, Tony Hunt, Edward Taub, Alan Bore and David Clements – we wish them many happy years at the club. We also welcome back Stephen Hill who has spent some time in Japan but is now home again and also Iris Hobday who has rejoined following time away due to medical problems.

Both men and ladies are into the various competitions and weekly leagues as well as the usual weekend friendlies, winning some and losing others. We held our President's afternoon on Saturday 6th June and it was an enjoyable event with guests of our President Ro Turner playing against our club members. The weather was good and we managed to raise some funds for the club. Everyone helped to make it a success with catering and raffle prizes, a bottle of whisky for the Spider (won by Ann Monk from Clavering) and Stella Rodgers making some lovely flower arrangements for the tables. Stella also made a wonderful basket of flowers which was presented to Ro by the ladies as a thank you for being Club President for the last two years. Ro would like to thank everyone for her afternoon.

We play the first round of our cup game against St Chads Bowls Club this month, a fixture that has been going on for many years inspired by the late Mr Cowan whose wife still lives in the village and is always pleased that we continue to play them. Let us hope that we have a real summer this year and all clubs do well in their games of bowls - unless they play against us, of course. If anyone is considering joining our bowls club we would be very pleased to hear from you.

Rex Turner
Hon Secretary/Captain



H₂O Plants Environmental Services

12 Walson Way
Foresthall Park
Stansted
Essex
CM24 8EU

Office: 01279 216 538
Mobile: 07958 304 744

- Architectural & Aquatic plants supplies
- Decking
- Fencing including painting / spraying
- Garden design, construction & maintenance
- Grounds / Estate maintenance
- Hedge cutting / shaping
- High pressure jet washing
- Irrigation
- Pest control
- Planting Schemes
- Rotavating
- Turfing
- Tree surgeons specialising in trees over / in water ~ NPTC qualified
- Weed control operatives specialising in aquatic weed control ~ NPTC qualified
- Lake, Pond & Water Feature design, construction, maintenance & management

**All staff are fully trained and insured with over 30 yrs experience
Commercial & Domestic customers welcome**

City &
Guilds
NPTC

www.h2oplants.co.uk
email: h2oplants@hotmail.com

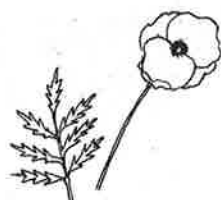




Nature Notes

During the summer months we are increasingly seeing the glorious sight of red poppies in the cornfields and along road verges. With the widespread use of herbicides during the '60s and '70s these flowers almost disappeared from the arable landscape, but started to reappear with the practice of set-aside in the late '80s. There is now also a more considered approach to the spraying of crops.

The field poppy, *Papaver rhoeas*, has been associated with agriculture since Neolithic times and springs up wherever the ground is disturbed, particularly for the growing of cereals. When Sir Flinders Petrie was excavating in Egypt he discovered poppy seeds mixed with barley in some of the relics. These were dated to at least 2500 BC. The Romans associated Ceres, the corn goddess, with poppies and the Assyrians called poppies 'daughters of the field'.



Poppies are prolific producers of seed. Each plant produces on average 17,000 tiny seeds. These can lie dormant in the ground for decades and given the right conditions will still germinate. The plants usually flower for a day before shedding their delicate thin petals but will continue producing

flowers for weeks. The opium poppy, *Papaver somniferum*, which is now found growing on waste ground in the wild, was once cultivated in Britain. It has large pale lilac flowers and broad leaves. Like the field poppy, the stem contains a milky fluid. The word 'opium' comes from the Greek 'opos' which means juice. It is from this that the drug is obtained, but in our climate very little opium can be produced. The seeds of the opium poppy are not narcotic and are used in cake and bread making.

Rosina Kirkwood

music@stansted

SUMMER SOIREE

As you will have read in last month's 'Link', Saturday 4th July at 6.00pm is the date and time set for our popular, biennial Summer Soiree featuring many outstandingly talented local young musicians in the Church and Gardens of St John's Church. Taking part will be:

Antony Camillo (piano) who is in his second year at the Scottish Academy and has played on Radio 3;
Sally Harding (oboe) – Harlow Young Musician of the Year (HYM) runner-up who hopes to study in Paris next year;
Amy Morrow (clarinet) who studies at the Guildhall and has also been HYM runner-up;
Leonid Plashinov-Johnson (violin) is a pupil at the Menuhin School and this year's HYM winner;
James Priest, who has studied voice and piano at the Birmingham Conservatoire;
Alice Prodger (piano) attends Chelmsford High and has passed all her piano grades with distinction;
Harriet Walker ('cello) attends the Junior Guildhall in London and was formerly in the National Children's Orchestra.

The first half of the concert is in the Church and in the interval there will be supper, licensed bar and jazz in the Church Gardens. Some tickets are still available, and must, for catering purposes, be bought in advance. Adults £12, accompanied children £5, including food, available from: Stansted Carpets, Nockolds Solicitors Bishop's Stortford, and Sonia Levy, 31 Chapel Hill tel 815282. For more information about music@stansted and future events please visit our website at www.musicatstansted.com.

Alan Corbishley

DT Bedroom Design Ltd

bedrooms • kitchens • studies • bathrooms



01279 657460 or 07765 257 200
Email: darryl.trigg@dtbedrooms.co.uk
www.dtbedrooms.co.uk



Competitive Prices
Free Site Visit
Free C.A.D. Design & Quote
New or Re-Vamps
Modern or Traditional
Over 200 Colour & Design Combinations

**Relax, De-stress
and Re-balance**
Indian Head Massage
Kinesiology
Reflexology
Reiki

**Call NOW for
appointment**

01279 321726
07770 766414

judy@wood-and-co.com

NEW! From November:
**Emotional Freedom
Technique (EFT)**
**"acupuncture without the
needles"**
Call for info

*Counselling / Psychotherapy
for Individuals*



Deirdre Ronald
 MBACP (Accredited)
 UKRCP (Reg. Ind.)

*Experienced in brief or longer term
counselling / psychotherapy*

Bishop's Stortford Based

Tel: 01279 730214

Mobile: 07870 304391

Email: deirdre@hertscounselling.net
www.hertscounselling.net

**Professional
Self - Employed Barbers**



5 Station Rd, Stansted
Tel 01279 817788

Opening Hours:
Mon, Tue & Fri 8 am - 6 pm
Wed & Thu 8 am - 8 pm
Sat 7 am - 4 pm

www.the-mensroom.co.uk

**Birchanger
Nursery Unit**

- Children aged 2½ to rising 5's for morning or afternoon sessions
- Well qualified, caring staff
- High quality pre-school education
- Own new building, and excellent facilities
- Located within lovely village school grounds

For further information please call Tina on **01279 814037** or visit birchangernursery.org

**Come and visit –
you will be made
very welcome!**



Very good Ofsted report (March 2008)



The Crafton Room

Over 55?

Then a warm welcome
awaits you at

The Crafton Room

Home cooked or frozen lunches

Snacks and social activities

Open Tuesday, Thursday
& Friday 10 am to 4 pm

Crafton Green, top of Chapel Hill

Bookings & enquiries on
01279 815091

MELODY BEAR....

**DANCE
CLASSES
FOR
PRE-SCHOOL
CHILDREN**



*Fun classes introduce
children age 2 - 4 years to
dance & movement
using the natural actions of
the body such as running,
jumping, skipping & galloping
– run by qualified teachers.*

**Classes in Stansted &
Bishop's Stortford**
Please contact us for details
and a free prospectus:

01279 654423

info@grahamschoolofdance.co.uk
www.melodybear.com

**Alzheimer's
Society**

Leading the
fight against
dementia

Uttlesford Branch

Our Outreach Workers
are happy to offer free
help and support to
people with dementia
and their carers.

Home visits possible.

Please contact us on
01371 872519

or email:
alzheimers@uttlesford.freemove.co.uk

Registered Charity No 296645

Lower Street Clinic
 36 LOWER STREET, STANSTED, ESSEX
 ESTABLISHED 1989

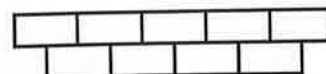
*Osteopathy,
Cranial Osteopathy
Aromatherapy,
Homeopathy
Flower Remedies
Chiropody/Podiatry
Infant Massage
Instruction
Pilates Instruction*

We have a specialist clinic for pregnant
mothers, infants and children

FOR FURTHER INFORMATION
OR TO MAKE AN APPOINTMENT,
PLEASE TELEPHONE

01279 815907

**CHRIS OSBORN
BRICKWORK &
GROUNDWORKS**



**Extensions & Conservatories
Property Improvements &
Structural Changes
Garden Walls & Patios
Flint Work & Traditional Lime
Mortars**

**T: 01279 850664
M: 07515 284238**

EMAIL :
chris_m_osborn@yahoo.co.uk

Wellbeing

Exploring the connections between mind, body and spirit with Isobel Bradshaw



MOUNTFITCHET GARDEN CLUB

www.mountfitchetgardenclub.co.uk

What do you do for fun? Would you think me odd if I told you that in discovering a new psychology model that I'm as 'Happy as Larry?' Wellbeing may hinge on a freedom to be open with others. Do we hide ourselves because we fear what others will think about us? Are we living unaware of truths (good and bad) that others can see in us? How much of our lives is unknown or waiting to be revealed?

My new toy is the Johari Window - a psychological model that can be used for personal and group development. I thought you might enjoy playing with it. It feels a bit like a Sudoku puzzle except that we are the puzzle; easy, medium or fiendish, we get to fill in the gaps. The window has four panes of information. The open pane is where we freely express our attitudes/behaviour to others. The hidden pane shields our private secrets, guilt and/or our true desires. The blind area is the knowledge people have of us of which we are unaware and the final area - maybe the most intriguing - the unknown. We can open, and deepen our lives through sharing and listening to feedback.

My weekly Johari TV fix is watching 'The Apprentice'. As the candidates compete, we hear and see what they choose to disclose or unconsciously reveal. Sir Alan's personality attracts a lot of reaction, but viewed objectively he is an expert in positioning people to products; those who can sell and those who will buy. Publicly he discloses his passion for making money but is he really disguising the pride he feels in creating a successful organisation that employs thousands of people?

Self-awareness rewards groups and individuals with a sense of power. Human beings extend some control in their lives, although unwelcome yet inevitable crises may leave people feeling lost and confused. At other times the unknown can delight us with an unexpected experience or relationship. This can be exhilarating with a sense that life has changed forever.

Rebuilding or embracing a new life is grounded on an acceptance that life isn't always fun. Wellbeing ultimately isn't a psychological puzzle; it is a continuing conversation and relationship within ourselves and others. Do we deepen our lives by having the courage not to hide but to share and to listen? Do we need another to fall into the unknown with; another - be that a God or a trusted other?

Mmm, now can you see the fun to be had?

The Johari Window

Known to all	Blind area
Hidden area	Unknown to all

Isobel

Dorothy and David Harrison's lovely garden at Turners Spring in Burton End was the venue for our June meeting. Members and visitors enjoyed the evening wandering around the garden questioning our hosts about the plants and shrubs growing there. The garden has evolved over 20 years and is full of superb specimen trees, shrubs, climbers and plants and a well-tended vegetable patch. Also on show were two photograph albums, showing how the garden has changed over the years and how it looks in the other seasons of the year. Thank you Dorothy and David for making everyone so welcome to your home and garden.

Next month, our meeting will be at the Day Centre (1st July 7.30pm for 8.00pm start). Our speaker is Bill Bossom and his talk will be on 'The Gardens of Capel Manor'. Our first in-house Rose Bowl Competition will also take place - one stem of a rose (any variety) and members are limited to three entries. Bikini vases will be provided.

Spring Coach Trip

Our annual trip to one of the RHS Gardens took place on 12th May with an afternoon trip to Hyde Hall, near Rettendon. However, when the Club heard that Wol and Sue Staines of Glen Chantry were retiring in August and closing the garden to the public, it was decided to visit their garden again en route, this time in spring ... and we were not disappointed ... even though it was early in the season and only their second day open the garden was a blaze of colour and full of fragrance from the flowering shrubs. The Nursery was very busy and the 'belly' of the coach was full before we had even arrived at Hyde Hall! The gardens at Hyde Hall have undergone some changes since our last visit and will soon have a new visitors centre too. An enjoyable afternoon was spent walking around; however, towards the end of the day we were pleased to find some sheltered spots as the easterly wind decided to blow and Hyde Hall, being on top of a hill, felt the full force of it!

Diary Notes

Our next coach trip is on Saturday 18th July when we will be visiting the gardens of Harcourt House in Bromley and then travelling on to The World Garden at Lullingstone Castle in Eynsford, Kent. If anyone is interested in coming along, we still have a few spare seats on the coach. The cost is £16 per person (this includes coach, entry fees etc). Please telephone Maralyn Harris on 07919 478144 to reserve your seat. Cheques should be made payable to The Mountfitchet Garden Club.

We are holding a Quiz Evening on Saturday 7th October at the Free Church Hall in Chapel Hill. More details later but please put this date on your calendar and in your diaries!! Remember you are always welcome at our monthly meetings - membership is available - or come as a visitor for £2.

Maralyn Harris
Chairman

HIBBS WALSH

associates ARCHITECTURE & DESIGN

'Restoring the past and building for the future'

Architect: M.A.HIBBS BSoc Sci, BSc, Dip Arch, ARB

Partner: S.M.WALSH LSIAD, BSc (Hons) Arch

Associate: J.A.Hayes BA, Dip Arch, ARB

82 High Street Saffron Walden Essex CB10 1EE

Tel 01799 523660 Fax 01799 509940

Email: office@hibbsandwalsh.co.uk

Website: www.hibbsandwalsh.co.uk

Baby Massage Courses

Mondays and Fridays in Stansted

Small friendly classes offering the opportunity to meet other parents and learn special relaxing massage techniques to enjoy with your baby.

Easing ailments such as baby's colic and constipation are among the many benefits.

For further information please contact:

Monday Class
JAN RICKWOOD
01279 850727



Friday Class
SUE MOLONEY
01279 771405

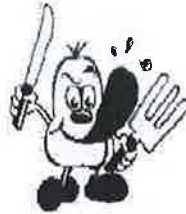
ALL GROUND WORKS • ALL WORK TO DPC
SITE CLEARANCE • GENERAL GARDEN CLEARANCE
DRIVEWAYS • PONDS • DEMOLITION • HORSE ARENAS

MICHAEL WRIGHT
Plant hire

T: 01279 815759 M: 07763886199

Orchard House, 5 Brewery Lane
Stansted, Essex CM24 8LB

LAN ONE COMPUTERS



Unit 2 Rear Of
16 Cambridge Road
Stansted
Essex CM24 8BZ

Phone 01279 816116
Email: info@lanone.co.uk

Your Local Computer Accessory & Repair Shop

BATHROOMS • TILES • ACCESSORIES

BUBBLES

Bathrooms designed, supplied and installed
27-29 High Street, Saffron Walden, Essex CB10 1AT
Tel: 01799 522488 www.bubbles-bathrooms.co.uk

Tile showroom in Elsenham open Mon - Fri 9am - 4pm
Please call 01279 815456 for details

A BETTER AERIAL



DIGITAL AERIALS
FM/DAB AERIALS
SKY TV REPAIRS
FREE ESTIMATES

WWW.ABETTERAERIAL.CO.UK



Working Towards Business Integrity

TEL: 0800 0437251
MOBILE: 0798 0817251

Sole
Trader
EST. 20 Years

STANSTED CARPETS CHAPEL HILL

EST. 1969

CARPETS ~ VINYL FLOORING ~ CURTAINS
CURTAIN FABRICS

ROLLER ~ VERTICAL ~ VENETIAN BLINDS
FREE ESTIMATES ~ PROMPT SERVICE

Call Peter on 01279-812019

E-mail: stanstedcarpets@hotmail.com

www.stanstedcarpets.com

CARPET CLEANER HIRE

C. C. VALETING LTD THE ULTIMATE IN CAR & COMMERCIAL VALETING



From Washes to Full Valets

Office 01279 815192 Mobile 07974 005642

www.ccvaleting.com

STEVE KING

STANSTED GAS SERVICES

07956 855328 01279 817581

Servicing, Breakdown and Repair to
Gas Central Heating and appliances.
Installation of Bathrooms and Showers
Gas Safe Registered. Ex - British Gas

Bareham Overy Partnership

RIBA Chartered Architects

Turn ideas into reality

- Residential
- Industrial
- Interior Design
- Project Management
- Planning & Building Regulation Applications
- Leisure
- Commercial
- Space Planning



Tel: 01279 816040 Fax: 01279 814414
1 Station Road, Stansted CM24 8BE

The elements were kind to us again and despite getting wet during the set up on Friday night and it being very overcast on Saturday morning, our June fair opened with some sunshine and stayed dry all afternoon. The Fair was opened by the children's Rainbow Parade showing us some of the work



they had produced during art week. This was followed by the choir and then it was all the fun of the fair. Our new burst a balloon stall was popular as were the more traditional sponge throwing, pick a pop and tombolas. Food was provided via barbeques, cream teas, candy floss and popcorn as well as the homemade cake stall. We also had a bar with refreshing Pimms to keep the adults going.



We would like to thank all the local businesses who donated prizes to the raffle, all the parents who helped set up, run a stall or put away and to everyone who came to support us. Also, many thanks to the Fire Brigade and the Community Support Officers for bringing their vehicles along for the children to take a look at. We raised around £2000 on the day and hope to increase this with some corporate sponsorship.

Our next big event is Music in the Park on 11th July. This will be a celebration of community and musical talent with an excellent line-up of local bands to entertain you, including Enquire Within and our headline band Hybrid 7. In its eighth year, we look forward to welcoming newcomers to our established village event in a lovely parkland setting. Bring a picnic or head for the barbecue and bar area. Soak up the

atmosphere whilst the children are entertained with our games area and inflatable fun run. Live music begins at 2.00pm. We hope to have booked good weather again so hope to see you all there.

Susan Scott
PTA Co-Chair

VOLUNTARY and RECREATION PROFILES

NO 2 PILOTS at STANSTED FREE CHURCH

There has been a Pilot Group at Stansted Free Church (formerly Stansted United Reformed Church, formerly Stansted Congregational Church) providing some 35 years of Pilot witness in Stansted! Pilots is a non-uniformed Christian organisation for children and young people from five to 18 years. It is ecumenical and although it is a youth organisation within the United Reformed Church, it is supported by several denominations, the Methodist Church being one of them. Pilots is a nationwide organisation and there are many companies throughout the UK. Every so often Pilots all over the country have a day out when they all meet together: on one such day we had a great time at Legoland.

Our Pilots in Stansted have a varied programme where they can gain badges and seals through projects, music, drama, art and craft and games. We invite friends to come along and share our evenings and join in the fun. We meet on alternate Mondays during term time in the Free Church Hall from 6.00pm to 7.30pm. During the summer months we occasionally have an outdoor activity, such as a games evening or a picnic. All children are welcome – you do not have to have any church connections! For more information please contact me.

Valerie Trundle
Tel: 813433

Email: pilots@stanstedfreechurch.org.uk

HARGRAVE HOUSE

Hello. I would like to introduce myself. My name is Stella Papworth and I am the Activities Co-ordinator at Hargrave House in Stansted. We are holding a fête on Saturday 15th August from 2.00pm-4.00pm to raise funds for a motorised scooter to benefit our residents and we hope you will support us. In addition, we would welcome more volunteers as we are currently organising a monthly coffee morning and would be grateful for any support - everybody is welcome! Please contact myself any time; your support will be greatly appreciated.

Stella Papworth
Tel: 817272

ada

Decorating
Reliable Painting and Decorating Services

Andrew Richardson

Tel: 01279 817282

Mob: 07980 439924

- 20 years experience
- References available
- Fully qualified
- Competitive rates

*Customer satisfaction
guaranteed*



Simplylawns

Lawn Treatment Service

Fed up with moss and weed?

We offer:-

- Regular lawn feeds
- Weed and moss treatment
- Aeration
- Scarification

CALL NOW FOR A FREE
LAWN SURVEY

01279 466100

www.simplylawns.co.uk

**HEARING HELP
UTTLESFORD**

FREE HELP

for problems with
NHS Hearing Aids
at

Stansted Day Centre
2 - 4 pm
on the last Tuesday
of every month

For more information ring
01799 599790
(9 am - 4 pm)

Registered Charity No. 289280

GET THE MOST OUT OF LIFE

**Hypnotherapy
& other brief therapies**

**One session
smoking therapy &
weight loss**

also

Confidence ~ Eating
Stress & Anxiety
Phobias

IBS & Depression
Study & Exams
and much more...

Please ring **GLYNIS CHEERS**

MA, BA, BSCN,

Dip. Clinical Hypnotherapy

01279 812165

threecheers@btinternet.com

**Stansted
Psychotherapy**

**Counselling
Psychotherapy
Life Coaching**

Resolve your issues
Create a better future
Start whenever you're ready

Sian Lloyd MBA Dip.NLPt
NLPtCA Accredited
UKCP Reg. Psychotherapist

Contact: 01279 817976
sian@stanstedpsychotherapy.com

AUTOMOBILE ENGINEERS

*David
Nunn's
Garage*



Bentfield Road Stansted
TEL: **01279 812686**



RAINBOW

PRESCHOOL

Approved Daycare for Children
St John's Road,
Stansted,
CM24 8JP

www.rainbowpreschool.net

**Welcome Children
Aged 2½ to rising 5's**

Mornings 9.15am to 12noon
Afternoons 1.00pm to 3.30pm

Experienced Friendly Staff

'a calm and well organised learning
environment' (OFSTED Jan 08)

For further information, please
call 07966 506997 or contact
Gill Pursglove on 01279 814701

**LINO
THOMAS
HAIRDRESSERS**

THE GREENS BUILDING
CAMBRIDGE ROAD, STANSTED
ESSEX CM24 8BZ
TELEPHONE 01279 812910

*BARNET FAYRE
VANITY FAYRE*

**Your local
friendly unisex
hair & beauty
salons**

**... we look
forward to
seeing you**

32a Lower Street
Stansted
Tel 813087

NECESSARY THINGS TO DO

We've discovered a strange new phenomenon at the Stansted surgery. Occasionally Angela or Wendy come into work in the morning to find a small bag containing dog poo looped over the front door handle! Is it some kind of message? Do people think "They're vets, they'll know what to do with it", or are they conscientious enough to clear up after their dog but too embarrassed to take it home? I was chatting to some friends about it and they mentioned that when walking their dogs they occasionally see used doggy poo bags left draped on gateposts or in bushes. How strange! Having made that effort to clear up after your dog, you would think that people would complete the job and take it home and dispose of it. So thank you very much whoever it is, but we have quite enough dog poo now, we don't need any more!

I think generally people are getting the 'scoop that poop' message. There are eight million dogs in the UK and they produce an estimated 1000 tonnes of dog poo a day - that's a lot of poo! The concern is that dog faeces can contain worm eggs and if a person accidentally gets contaminated and ingests the worm eggs, the larvae can hatch out and migrate around the body, causing among other things, blindness, if the larvae reach the eye. This is extremely rare but it has happened. It occurs mainly in young children because they aren't so good at washing their hands before they suck their thumbs, and often toddlers' faces are at dog height for a lovely kiss. As well as clearing up after your dog, it is also important to worm them regularly, and that goes for cats too.

It is recommended that puppies and kittens are wormed monthly until they are six months old and then every three months after that. One of the commonest things I hear is "I haven't seen any worms, so I don't have to worm them." The answer to that is, some worms you see and some you don't. The delightful worms that wriggle out of a cat's bottom (sorry, you weren't having breakfast were you?) are likely to be tapeworms, while roundworms hide out in the stomach and small intestine and you're only likely to see those if your cat or dog vomits. The good news is that all you have to do is pop into the surgery and Jo our nurse or any of the receptionists will give you advice on the best product to use. Remember, the products you get from a vet are more likely to be safer and more effective than pet shop or supermarket products, and you get the free advice. At the moment there is a loyalty card scheme for Drontal wormers. Every time you buy a dose, you get a stamp on a little card, and once you've got three stamps, you send it off and they send you a free dose in the post. Simple. For those people with cats that turn into whirling dervishes when you approach them with a worming tablet, there is a new product out called Profender. This is a spot on wormer that you put on the skin on the back of the neck like the flea treatments. I can't imagine the number of bitten fingers and scratched arms it's saved already. So there you go, no excuses for not worming now, so come down to the surgery and say hello, but please take your dog poo home with you!

Just to give you advance notice, we will be having a stall at the Hatfield Forest dog fun day on Friday 21st August. There will be lots of displays, quizzes and games to play, with a lucky dip and face painting for the children and a chance to

talk to some of the vets, receptionists and nurses. Come along for a chat; we'd love to see you.

Ilse Pedler
Partner
Mercer and Hughes
Veterinary Surgeons

BIRCHANGER KARATE CLUB

Birchanger Karate Kids success

I would like to introduce you to the UKA Birchanger Karate Club of which I am the Head Sensei (Instructor). My name is Dean Tilley and I am a member of and fight for the England Shikon Karate Squad, of which our Birchanger club is a member. The group Shikon itself has clubs all over the country with over 1000 members. If you and/or your children would like to participate in karate, then please come along for a free introductory lesson. We run a club on Fridays from 6.00pm to 7.00pm at Birchanger Village Hall for children aged 5+ , and for mixed adults from 7.00pm to 8.00pm. There is also a class at Henham Village Hall on Tuesdays at the same times. Please note that two new clubs will be opening shortly in Bishops Stortford and Stansted, and to book a place call Dean on 07951 479125. Our lessons emphasise fun, fitness and the chance to learn a brilliant martial art that will benefit both children and adults. Our karate style is Wado-Ryu, which originates from Japan and we combine both traditional and sport aspects of the martial art.

Our senior squad have just returned from County Donegal, where we took part in the Irish WUKF Karate Championship competition. We won nine gold, six silver and five bronze medals. I myself competed and took a Silver Medal. The photo features a few of our leading senseis. From left to right: Daniel Cuthbert - National Champion, Ian Cuthbert - Chief Instructor of the Shikon National Squad and myself.



In May, our Birchanger students took part in a Grading day in North Weald, along with other UKA members. Ten Black Belt Instructors oversaw the occasion in which 18 students from Birchanger Karate Club all passed with merits and distinction grades. We hope to see you soon at one of our energetic, action packed classes.

Dean Tilley



The Laurels Bed and Breakfast



Visit Britain 4 star accommodation

Allan & Margaret Cairns 01279 813 023
84 St John's Road info@thelaurelsstansted.co.uk
Stansted Essex CM24 8JS www.thelaurelsstansted.co.uk



MERCER & HUGHES

Veterinary Surgeons

80 Cambridge Rd, Stansted. Tel 01279 813780

Surgery Hours

Mon - Fri 8.30 am - 10.30 am
4.30 pm - 7 pm
Sat 8.30 am - 10 am

Also surgeries at Saffron Walden & Dunmow

HIRE THE NEWLY REFURBISHED

Ugley Village Hall

With two halls, ample parking, facilities for the disabled and competitive rates, the refurbished Ugley Village Hall on Cambridge Road is ideal for clubs, classes, functions, children's parties and social meetings.

Bookings or further information please call Susan Bone 01279 814052

Kate Harrison

CURTAINS, PELMETS, BLINDS,
CUSHIONS of all SORTS, BED COVERS,
VALANCES - ALL MADE TO MEASURE

I can supply fabrics, trimmings, tracks & other accessories.
Please call for my free advice and measuring service.

Tel / Fax 01279 777452

email: kateharrison_1@yahoo.co.uk

Battery Distributors



Any Battery Any Purpose Any Where
Service & Repair of Power Tools

Tel 01279 815582

email: sales@zelta.co.uk
www.batterycharged.co.uk



Enter the world of Beauty Secrets...

A small but unique beauty haven on your doorstep, providing all your beauty needs from a simple reshape and varnish to enjoying one of our many luxury treatments. Working with the latest products from Nimue Skincare, OPI and Hive Spa Systems

Please telephone Kellie for a price list and any latest promotions 01279 816625

Beauty Secrets are in Manuden near Bishops Stortford

CHOCOLATES FOR HOCOHOLICS

Christmas	Fundraising	Gluten Free
Halloween	Birthdays	Diabetic
Weddings	Corporate / Gifts	Nut Free
Valentines	Mother's Day	Easter

Nikki Westwood 01279 771867

Email thechocolatelady@tiscali.co.uk
www.chocolate-parties.com



STEVE HALL GARDEN SERVICES



CALL FOR HELP IN YOUR GARDEN

Tel 01279 817739

Mobile 07778 049063



Fancy Fingers

Nail and Beauty Studio

10% off

your first treatment with this advert

Visit us on
www.fancyfingers.co.uk



52a Silver Street, Stansted CM24 8HD
Tel 01279 647646

N W Brown Landscapes

All aspects of landscaping
undertaken including fencing,
decking, paving, lawns & planting

Nigel Brown
07917 611945
01279 507255

RHS Qualified
Registered waste carrier

SKYWATCH

A monthly look at an aspect
of the night sky



July sees the 40th anniversary of the first Moon landing and Skywatch, for this month only, has an especially extended edition. The quest for the Moon was firmly founded on the political rivalries between the only two countries that could afford such an escapade, the USA and the USSR. But whatever the impetus, the fundamental science was going to be the same. Sending someone to the Moon is really quite straightforward; we know how far away the Moon is - 230,000 miles or so - and as we knew it would take about three days to get there, we just had to remember to point the spacecraft to where the Moon would be in three days time, not where it is at lift-off. There was, however, the need for the creation of brand new vehicles. Yes, there were five separate types of rockets that had to be designed, built and very thoroughly tested to get the spidery Lunar Module to the surface (and a sixth to get it off the Moon to come home) along with numerous manoeuvring thrusters. Incidentally, the Lunar Module was the first true *spacecraft* in that it can neither take off or land on the Earth as it is built to fly only in zero gravity and in the Moon's gravity which is just one sixth of the Earth's. It weighs about 20 tons which becomes something just over three tons on the Moon. The most efficient way, or rather the least inefficient way, is to use gravity whenever you can.

It surprises some people when they discover that most of the ride to and from the Moon is done without any rocket power being used. We simply accelerate the rocket to a speed that is called the escape velocity, which for the Earth is 25,000 miles an hour, then shut the thrusters down. The craft has effectively been thrown to a speed of 25,000 mph and, as with anything thrown upwards, it starts to slow down. Here's the clever bit: when the spacecraft has slowed down to about 2,000 mph, guess what, the Moon's gravity becomes strong enough to pull the spacecraft. This acceleration increases the velocity to about 5,000 mph which nicely takes the craft into Moon orbit.

What was used to throw the Apollo assembly was a rocket called the Saturn Five. A machine designed only for the unique requirements of sending people to the Moon and back again yet one of the most beautiful and elegantly proportioned machines ever to move. Eight seconds before lift off the five main engines light up. Only when the countdown gets to zero do the engines obtain full power and the explosive bolts that have held the whole Saturn Five down duly explode and the beast is released. With almost unbelievable reluctance the 365 foot high structure starts to leave the ground as its five engines, generating seven and a half million pounds of thrust, slowly win their argument with the Earth. Above everything about the Apollo missions, was the human endeavour, the determination, the new levels of engineering precision, the new materials, the bravery and the success of this short but fabulous first venture to another place in the Universe. Many, including myself, regret that the Moon missions were stopped because of money but even I know that 24 billion dollars in the '60s was an awful lot of money. So perhaps it should stay the unique and triumphant event that it was.

Martin West,
Mooncraft Productions

St Mary's CE Foundation Primary School

Caring, sharing, preparing for life



Since the last bulletin from St Mary's we have been active as ever in all the various aspects of school life. The school is growing, with new pupils joining in all year groups and a bumper intake due in September. The transition programme for the new Foundation Stage pupils has taken place and we look forward to seeing them again in the autumn. The start of the summer term has seen the change from football, rugby and netball to cricket, rounders and athletics. We have been working hard on the art work for Stansted in Bloom and Year 6 are rehearsing their end of year production 'Lights, Camera, Action!' The time just flies! The pupils in Years 5 and 6 have had their annual 'get together' with children from the Ben Jonson School in Tower Hamlets. For the last three years we have hosted them here in school, so this year we went instead to visit them at Gorsefield Hall where they were on a residential visit. The weather was beautiful and it was a very successful visit (except that Ben Jonson beat us at football on both days!). During the next school year we and the teachers from Ben Jonson aim to set up email links between pupils using the efolio internet learning platform.



Staff, Governors and pupils of the school have all worked with Essex planners on the new school building project. There has been a lot to think about and a lot more work still to do but the architect should be producing drawings over the summer. We were proud that the school choir joined the Worship4All service at St. John's in May, when they performed 'Jonah-Man Jazz'. Our choir sang really well and we had some rave reviews! I hope we will be able to contribute again in the future. Essex Wildlife Trust came to the school and worked with all the classes on the design for a wildlife area at the front of the school. The children started the day with a wish list of what they could include and finished with some lovely drawings that we will use to improve the school grounds. And finally ... our PTFA Summer Fair is to be held on Sunday 28th June. The more the merrier so please come along and join the fun.

If you are new to the area and would like to have a look at our school, please give us a ring on 812212 to arrange a visit. We are always happy to show you around the school and answer any questions. We also have a website full of information: www.st-marys-stansted.essex.sch.uk.

Christine Tonkins
Headteacher

ADULT COMMUNITY LEARNING

New Prospectus out in July
Book early and get 10% discount



We are again offering our 'Early Bird' discount - enrol and pay in full by 28th August and get 10% discount. Or spread the cost with our 'Easy Payment' plan. All courses over £100 can be paid in 2 instalments - 60% now and 40% by 29th January (cannot be used in conjunction with 'Early Bird' discount).

Concessionary fees to those in receipt of Income Related Benefits or Disability Living Allowance.

Ring us on **813319** quoting 'Stansted Link'
email: lifelong.learningwest@essexcc.gov.uk
or visit www.essexcc.gov.uk/adultlearning

Potheary Witham Weld | **PWW**
solicitors

For Professional Advice You Can Trust

Call us: 01279 506421

Email: info@pwwsolicitors.co.uk
or visit www.pwwsolicitors.co.uk

White Horse Court, North Street
Bishop's Stortford, Hertfordshire CM23 2LD

Clients' parking and Disabled Access

Also in the City of Westminster

Wills, Probate & Trusts - Commercial & Residential Conveyancing
Charities and Ecclesiastical Law - Corporate & Commercial Matters
Litigation & Matrimonial - Landlord & Tenant - Notarial Services

Members of the Lawyers Christian Fellowship

Royal Tandoori

Exclusive Indian Cuisine

FREE Home Delivery
Take-away available
10% discount
on orders over £10
on collection

Sunday Buffet
12 - 2.30 pm and 6 - 11.30 pm
8 Chapel Hill, Stansted CM24 8AG

01279 815688
01279 812774

Look after the skin you're in
with our alternatives to surgery...

karen dovaston-harris

Specialising in **all** forms of Beauty
also air brush make-up and tanning

Indulge yourself and relax in a tranquil setting with complete privacy

For information on treatments
Telephone 01799 541888

10% discount from your first treatment on production of this advert

Gift Vouchers Available

HTM

SCAFFOLDING SERVICES

6 Mill Road Henham
CM22 6AB

T : 01279 850001
M : 07980 465628

- ✓ Professional Reliable Service
- ✓ Very Competitive Pricing
- ✓ Full Liability Insurance
- ✓ Expert Advice
- ✓ FREE Site Surveys & Estimates

STANSTED LUNCH CLUB

May Lunch

The May lunch, with 55 members present, broke our normal pattern of sponsorship and served as a local launch of The Savvy Business Community, operated by Savvy Business Limited, which had had its national launch in London on 11th May. Savvy is a fresh concept in the provision of business information, help, advice and networking opportunities across the UK, combining traditional approaches with new media. Sherie Griffiths, Savvy's enthusiastic Director and founder, told us of its background and development and invited members to sample its wares by taking a seven day trial membership which I would thoroughly recommend: More details at www.savvybc.com. Lunch itself was the usual consummate expression of culinary skills and professional service which we have come to expect of Danny Doyle and his welcoming and friendly team.

Future Lunches

15th July – St Clare Hospice sponsored by Weston Business Centres and Daniel Robinson & Sons
23rd September – Sponsor needed

Appeals for St Clare Hospice

The next lunch on 15th July will be focusing on St Clare Hospice and so perhaps it is not inappropriate to mention a couple of events taking place between now and then which I would urge members to support generously. But first I must declare my interest, which is that of a Trustee and Treasurer of St Clare. Firstly, I recently received an email from a Lunch Club member, Suzanne Williams of Lloyds TSB, from which the following is an extract: "I would very much like to attend the 15th July as I am actually undertaking a 50 mile cycle ride (the Norwich 50) on 7th June which I am doing to raise funds for St Clare as it was where my sister spent her final weeks in the year 2000. I do have a Just Giving website and at the moment have raised just under £500. If anyone would like to donate that attends the lunch club they can donate via www.justgiving.com and searching Suzanne Williams (my site is [suzanne williams7](http://suzannewilliams7))."

Secondly, Clive Gillam a Corporate fundraiser for St Clare Hospice, who will be familiar to many of you, has asked me to announce a new corporate fundraising event in St Clare's 2009 calendar. With the kind permission of the management team at Chesterford Research Park, St Clare has arranged an 'It's A Knockout' competition for the evening of Thursday 9th July. The evening commences at 5.00pm with a briefing; the games will start at approximately 5.30pm and should be completed by 8.00pm after which participants and spectators will be able to enjoy bar facilities and a barbeque organised by Chesterford Research Park. St Clare invites Team Entries, at a price of £100 per team (ideally between 6 and 10 persons). It is also suggested that each team member seeks individual sponsorship so increasing the fundraising potential of this new venture. For further information, please do contact Clive at St Clare Hospice: clive.gillam@stclarehospice.org.uk or on 07771 886174.

Other Activities

Barry Root's Racing Day on Friday 24th July from 12 noon: lunch, visit to the National Stud, evening racing at Newmarket plus a concert with Status Quo. Barry's days out

are always good fun. The Mayor of Bishop's Stortford's Golf Day with Ian Hudson is helping the new Mayor, Colin Woodward, to organise a Charity Golf Day later in the year. He is looking for local firms to sponsor each of the 18 holes for £250 each. This is a great opportunity to help raise some funds for a local charity and to get some cheap publicity. Down Hall Hotel has kindly offered to sponsor the 9th hole so we just need 17 more! And of course, Bob Lee's Bishop's Stortford Means Business Exhibition on Wednesday 21st October. Further information on all these from me.



Alastair Richardson
Tel: 078502 95109

Email: amg.richardson@gmail.com

THE KING'S ARMS

We held a successful in-house darts competition at the King's Arms hotel, with over 40 entrants, playing for three trophies after 23 years absence. All monies raised will go to our charities, which this year are The St Clare Hospice and local charities. The winners were: Men's singles - Dan Naughton, Women's singles - Jo Turner, Mixed doubles - Dan Naughton and Sarah Field.



We would like to thank all competitors and say congratulations to the winners!

Stefanie Moore

UGLEY FARMERS' MARKET

(every 3rd Saturday of the month)

Saturday 18th July

Ugley Village Hall

10.00am-12 noon

Marvellous meat

Blissful baking

Fabulous fruit and veg

Honey, eggs, cards, crafts ...

Refreshments

Easy Parking

Index to Advertisers

		Page			Page
Animal Care	Cool 4 Cats	14	Household Services	A Better Aerial	28
	Mercer & Hughes	32		ada Decorating	30
Art and Craft Community & Care	Millway Stationery	10	Bubbles Bathrooms	28	
	Alzheimer's Society	26	A&M Collins Roofing	BC	
	Hearing Help Helpline	30	Do-It-4U	10	
	Ross Nursing Services	8	D T Bedroom Design	25	
	Day Centre (Crafton Room)	BC	Fairweather Windows	BC	
	Uttlesford Carers	26	Harpers Plumbing & Heating	BC	
	Ugley Village Hall (for hire)	8	JDW Gas Heating Specialist	8	
	Alan Horsley (Computer Repairs)	32	Newman's Home Services	12	
	Lan One (Accessories & Repairs)	8	Ray the Plumber	12	
	TCS (Set Up & Repairs)	28	Shutes Painting & Decorating	16	
Computing & Office	Adult Community Learning	12	Stansted Gas Services	28	
	Birchanger Nursery Unit	34	Back to Basics (Pilates)	10	
	Montessori Day Nursery	26	Crusty Jazzers	8	
	Rainbow Pre-School	10	Graham School of Dance	22	
Education	Spangles Children's Centre	30	Mitchell School of Dance	14	
	Sunnyside Nursery	6	Melody Bear (for children)	26	
	Albury Electrical Services	BC	Mft Romeera Leisure Centre	22	
	A&I Electrical	12	D Bonney & Sons	6	
Electrical	Zelta Batteries	16	C C Valeting	28	
	Greenways Financial Planning	32	David Nunn's Garage	30	
	Mansell & Co	6	Garry King Family Cycles	22	
Financial & Legal	Pothecary Witham Weld	FC	Stansted Chauffeur Services	14	
	Bada Bing!	FC	Baby Massage	28	
Food & Lodging	Chimneys Guest House	16	Barnet Fayre (Hair & Beauty)	30	
	Chocolates for Chocoholics	32	Beauty Secrets	32	
	Eddie Ho Fish & Chips	8	CK Men's Room (Hairdressing)	26	
	Flutes Tapas Bar	FC	Dovaston-Harris (Beauty)	34	
	Pocknell Food Co	14	DR Counselling & Psychotherapy	26	
	Royal Tandoori	34	Fancy Fingers (Beauty)	32	
	The Cock	BC	Glynis Cheers (Hypnotherapist)	30	
	The Dog & Duck	BC	R Handford (Chiropodist)	16	
	The Laurels Bed and Breakfast	32	Lighter Life	BC	
	The Kings Arms	14	Lino Thomas (Hairdressing)	30	
	Daniel Robinson & Sons	6	Lower Street Clinic	26	
	J Day & Son	8	Mobile Hairdressing	12	
	D C Poulton & Sons	22	NFSH	16	
	Amanda Wells Design	16	Relax, De-stress & Re-balance	26	
	Fabrications	12	Skin Deep Beauty	12	
	Kate Harrison	32	Smith (Reflexology & Massage)	8	
	New Look (Upholsterers)	8	Stansted Chiropractic	6	
Stansted Carpets	28	Stansted Psychotherapy	30		
Agapanthus (Floristry Designs)	16	Williams (Osteopath)	10		
N W Brown (Landscapes)	32	What's a name's (Hairdressing)	BC		
Crystal Clear Ponds	8	Printing Property Services	Copyzone	12	
Green Thumb (Lawn Treatment)	BC	Aldwych Construction	8		
D Honour & Son (Landscapes)	22	Bareham Overy Partnership	28		
H ₂ O Plants	24	Chris Osborn (Brickwork)	26		
Selina Rankin Garden Design	16	Hibbs & Walsh (Architects)	28		
Steve Hall Garden Services	32	HTM Scaffolding	34		
J R Johnston (Trees)	8	A C Wright Building Contractors	12		
Mayfair Ponds	22	M Wright Plant Hire	28		
Simplylawns	30	Retailers	Family News	12	
			John Wilson Jeweller	10	

BIRTHDAYS, ANNIVERSARIES or SPECIAL OCCASIONS

If you would like to mark any occasion that is special to you or someone you know, by announcing it in the Link, please email a short message together with your name address and telephone number to: announcements@stanstedlink.org.uk or send the form below to 7 Blythwood Gardens, Stansted CM24 8HG. Details must be submitted by the 11th of the month for publication the following month.

Message _____

Sender's Name _____ Tel _____

Looking for Quality Windows?

...then look no further!

- Bi-Folding Door Specialist
- A wide range of styles and colours available to suit your needs
- All products are tailor-made to your requirements
- Full independently backed 10 year guarantee



Here's what some of our customers say about us;

'The practical knowledge and craftsmanship they demonstrated exceeded our high expectations' Mr S, Elsenham

'I was particularly impressed with how your team worked, causing minimum disruption to our busy family life, cleaning up as they went' Mr G, Stansted

Call us NOW on:



01279 813888

Suppliers and installers of Quality Windows, Doors and Conservatories

WHAT'S A NAME'S UNISEX HAIR SALON

- Haircutting and Restyling
- Colouring
- Perming
- Children Welcome
- 20% Discount for Senior Citizens *(weekdays only)*

OPENING TIMES

Monday - 9.00am to 5.00pm

Tuesday to Friday - 9.00am to 6.00pm

Saturday - 8.30am to 4.30pm

Out of hours appointments by request

01279 817899

1 Lower Street Stansted CM24 8LN

ROSS NURSING SERVICES LTD

RNS are now able to provide in your area:



- Nursing and domiciliary care in the comfort and safety of your own home.
- Highly trained experienced Nurses / Carers
- Security checked staff
- Short or long term care for you or your family.

Please contact Mrs Harriet Holder on
01799 551046 for more information

SUNNYSIDE CHILDCARE

REGISTERED
CHILDMINDER

☎ 01279 816215

Rachel Pocknell, 43 Sunnyside, Stansted Mountfitchet



THE COCK

30 Silver Street, Stansted CM24 8HD
Tel: 01279 812964

Home Cooked Food served 7 days a Week

Families Welcomed ~ Children's Play Area

Children's Menu ~ Heated Decking

Mon - Sun Lunches 12.00 - 2.30 pm

Mon - Sat Evening 6.00 - 9.00 pm

Bar Snacks ~ Sunday Roasts ~ Fish Night Thursday

OAP Lunches Mon & Wed 12.00 - 2.30 pm

Take-away Fish and Chips

A & M COLLINS ROOFING

Guaranteed Workmanship



- SLATING • TILING • LEADWORK •
- ZINCWORK • GUTTERING • FLAT ROOFS •
- REPAIRS • UPVC FACIAS & GUTTERS •

Tel/Fax: 01279 816491 Mobile: 07956 873230

35 Gilbey Crescent Stansted CM24 8DT

Email: danny@dcollins6.wanadoo.co.uk

www.roofer-essex.com

Tel: 01279 771981
Mobile: 07885 597063
Fax: 01440 713498
Email: nharper114@aol.com
www.harpersplumbing.co.uk

Harpers
Heating & Plumbing



All Plumbing, Heating & Gas Repairs
Servicing & Installation
Bathroom & Water Softener Installations
Power Flushing ~ Gas & Oil Specialists
OFTEC Approved Oil Engineers

I said goodbye to the old me with LighterLife

I was fed up of being overweight. I couldn't run upstairs without getting out of breath, let alone dance. I'd tried every diet going without success, then I decided to join LighterLife and seven months later said hello to a whole new me.

- Lose weight fast and keep it off
- No calorie counting
- Friendly, encouraging Counsellors who are qualified to help you
- Small single sex groups with people just like you

3 stone or more overweight?
Call LighterLife today

As seen on TV

'I've kept the weight off for 3 years!'

Sharon Webb
Saffron Walden
01799 523044
www.lighterlife.com/sharonwebb

LighterLife
Life in balance



The Dog and Duck

Lunchtime food now available
Wednesdays Pie Night
Thursdays Monthly Quiz Night

Sally & Mark look forward to seeing you soon
58 Lower Street, Stansted
01279 812047

For over a third of a million home owners who treat their lawn throughout the country, GreenThumb Lawn Treatment Service is the secret of their beautiful lawn.

Since 1986, GreenThumb has been leading the way in lawn care and is widely recognised as 'Britain's Lawn Expert'!

The GreenThumb Service includes:

- Professional Feeds not available at DIY stores or Garden Centres
- A professional service that costs less than DIY
- No minimum contract, Pay-As-You-Go service
- Fully trained and uniformed operatives
- Hollow-Tine Aeration and Scarification to tackle the main causes of moss

What is the GreenThumb Service?

The GreenThumb service is a series of pre-scheduled lawn treatments. Included in these treatments are dry granular fertilisers and weed control for both broad-leaved weeds and the more resilient weed varieties. The GreenThumb service also targets moss, which after the warm damp summer we have experienced, is a major problem on many lawns.

Call today for your free, no obligation, lawn analysis and quotation on:

01440 71 38 38

Text lawn + your postcode to 60006 and we will call you back

The Secret of a Beautiful Lawn

REVEALED

from as little as
£14 per 1000sqm



www.greenthumb.co.uk

GreenThumb
LAWN TREATMENT SERVICE