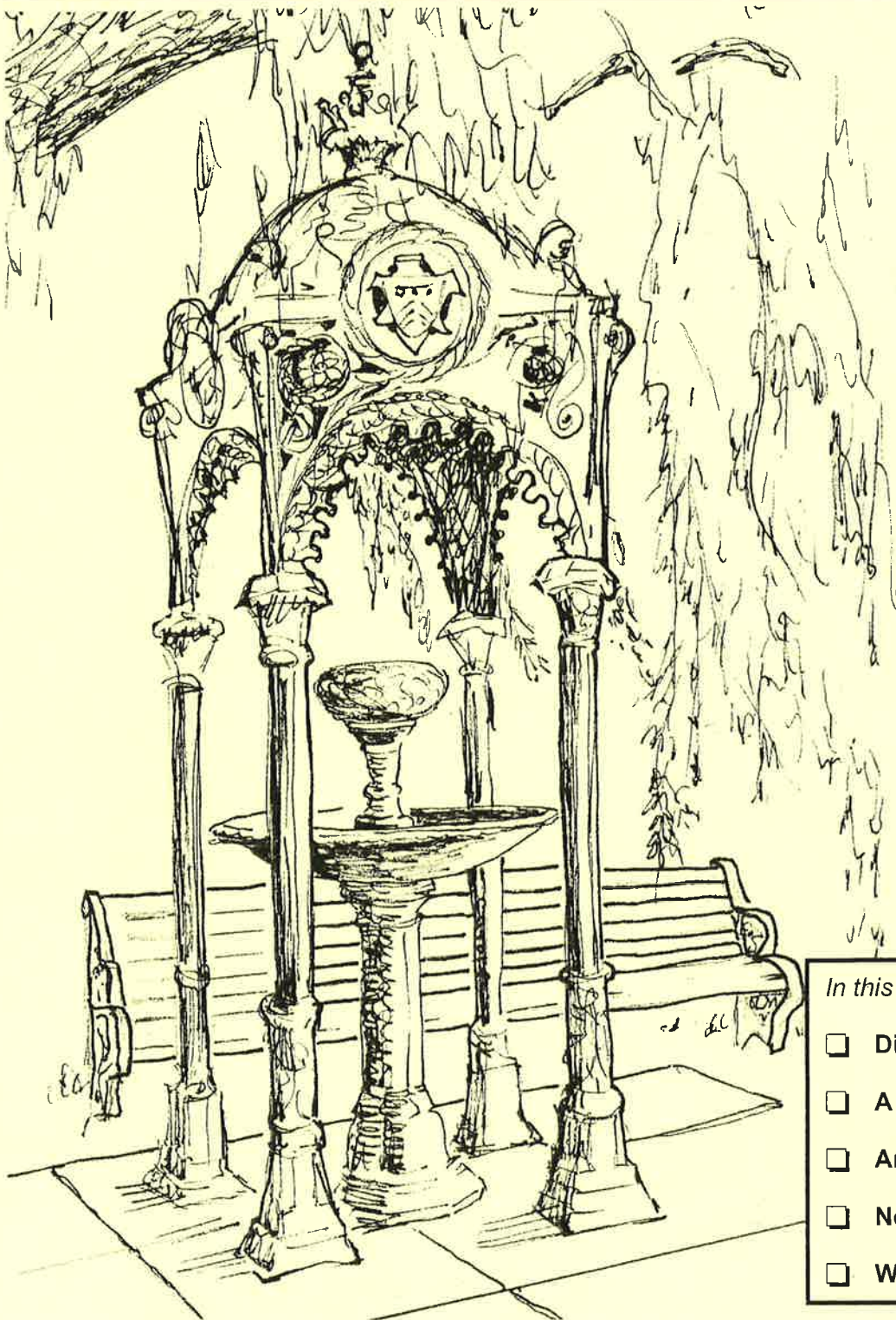


Stansted Mountfitchet

# The Link



*In this issue...*

- Dick looks back *Pt 1* p6
- A Dog's Dinner p13
- Arches various p13
- New Racecourse p14
- Waste bin changes p23

**ada**  
Decorating

Reliable Painting and Decorating Services

**Andrew Richardson**

**Tel: 01279 817282**

**Mob: 07980 439924**

- 20 years experience
- References available
- Fully qualified
- Competitive rates

*Customer satisfaction  
guaranteed*

**CHIMNEYS**  
Guest House



Exceptional standard of accommodation

ETB 4 Diamond Rating with Silver Award

All guest rooms have ensuite facilities

Open All Year including Christmas

Iain & Selina Rankin

Chimneys

44 Lower Street, Stansted,  
Essex CM24 8LR

Tel/fax: 01279 813388

Email: [info@chimneysguesthouse.co.uk](mailto:info@chimneysguesthouse.co.uk)

Web: [www.chimneysguesthouse.co.uk](http://www.chimneysguesthouse.co.uk)

1893

**Modern European Cuisine**

**Special Occasion?**

Excellent food, wine & service

2 Courses £22.95

3 Courses £26.95

Mon to Sat 6.30 onwards

Sunday Lunch 12 - 2pm

Lunchtime by reservation only

Outside catering quoted upon request

40 Lower Street, Stansted CM24 8LR

01279 817474

**A.BETTER.AERIAL**



[www.abetteraerial.co.uk](http://www.abetteraerial.co.uk)

DIGITAL AERIALS

SKY TV

FM & DAB RADIO AERIALS

ANTI-GHOSTING AERIALS

EXTRA TV POINTS

AMPLIFIERS

COMMUNAL SYSTEMS

FREE ESTIMATES & ADVICE

**YOUR LOCAL AERIAL MAN**

Bishop's Stortford

01279 815948

07980 817251

Carters Hill Manuden

**R D Ellis**

**FURNITURE RESTORATION**

Repair and traditional  
polishing of antique and  
not-so-antique furniture  
by a local restorer

Tel 01371 879859

Mobile 07950 051577

Unit 4, Kerwyns

Gallows Green

Dunmow

CM6 3QS

*BARNET FAYRE*

**Invites you to  
our friendly  
unisex salon for  
that extra  
special style ....**

**... because YOU  
are worth it!**

**32a Lower Street  
Stansted  
Tel 813087**

**Greenways Financial Planning**

*Independent Financial Advisers*

- Free Consultations
- Confidential Home Visits
- No Fees Charged

**Professional friendly advice on**

Life Assurance • Pensions including Stakeholder

Mortgages • Investments including ISAs / PEPs

Critical Illness • Income Protection

Annuities • Long Term Care • Estate Planning

Greenways

Park Road, Elsenham CM22 6DF

Tel / Fax 01279 816622

A member of DBS Financial Management plc which is regulated by the Financial Services Authority. DBS is part of the MYSIS group of companies. The FSA does not regulate mortgages nor all forms of critical illness income protection & long term care



**MCM Computer  
Services**

**A Reliable and Friendly Service for  
Homes and Businesses**

**Computer Systems • Upgrades & Repairs • Parts & Peripherals**

- **FREE Telephone Advice**
- **No Call-Out Charge**
- **No Fix, No Fee on all home user systems**
- **Fixed Price + FREE collection and return for workshop repairs**
- **On-Site Repairs, £30 1st hr, £20 per hour thereafter**

**Tel: 01279 813227 / 07815 011925**

**9 am - 9 pm Mon - Sat**

**[www.mcmcomputerservices.co.uk](http://www.mcmcomputerservices.co.uk)**



Opinions expressed in this magazine are given freely and do not necessarily represent those of CTS, its member churches, village organisations or advertisers.

<i>Editor</i>	Derek Honour	☎ 647213
<i>Distribution</i>	Janet Townsend	☎ 812593
<i>Advertising</i>	Wendy Moss	☎ 812797

**Copy to reach 58 Chapel Hill or email to stanstedlink@aol.com**

By 12th January for publication on 28th January

By 9th February for publication on 25th February

## Index to Advertisers

	<i>Page</i>		<i>Page</i>
<b>Animal Care</b>	Mercer & Hughes (vets)	8	
<b>Community &amp; Care</b>	Alzheimer's Society	24	
	Hearing Help	18	
	Helpline	18	
	MIND	8	
	Stansted Day Centre	18	
	Uttlesford Carers	10, 28	
<b>Computing and Office Services</b>	Alan Horsley	24	
	Gina's Business Services	28	
	MCM Computer Services	FC	
	Shadowfax	24	
<b>Education</b>	Adult Community Learning	27	
	Birchanger Nursery Unit	18	
	Montessori Day Nurseries	16	
	Rainbow Pre-School	24	
	Sideways Pre-School	20	
<b>Electrical</b>	Corbett Electrical	BC	
	Zelta Batteries	20	
<b>Financial &amp; Legal</b>	Davidson Oakley & Co	12	
	Greenways Financial Planning	FC	
	Pothecary & Barratt	BC	
	Vickers	20	
<b>Food &amp; Lodging</b>	Chimneys Guest House	FC	
	Eddie Ho Fish & Chips	18	
	Restaurant 1893	FC	
	Royal Tandoori	BC	
	Star of India	28	
<b>Funeral Services</b>	D C Poulton & Sons	BC	
	Daniel Robinson & Sons	BC	
	J Day & Son	10	
<b>Furniture &amp; Furnishings</b>	Fabrications	10	
	Kate Harrison	8	
	New Look (upholsterers)	10	
	Stansted's Painting Ladies	24	
	Stansted Carpets	20	
	Valley Carpets	26	
	You're Furnished	8	
<b>Garden Supplies, Services &amp; Floral</b>	Flowers for every Occasion	BC	
	D Honour & Son	8	
	Garden Design	12	
	Green Thumb	10	
	J R Johnston	18	
	Perry's Garden Centre	28	
	Selina Rankin	24	
	Steve Hall Garden Services	10	
	The Mower Shop	28	
<b>Holidays</b>	Let's Go To France	BC	
	Holiday in Spain?	8	
<b>Household Services</b>	A Better Aerial	FC	
	ADA Decorating	FC	
<b>Household</b>	A&M Collins Roofing	BC	
<b>Services</b>	Bubbles Bathrooms	BC	
	Do-It-4U	26	
	Foster Plumbing & Heating	20	
	JDW Gas Heating Specialist	20	
	Knights Windows	12	
	Mark Robinson (handyman)	20	
	Mountfixit DIY	8	
	R D Ellis (furniture restorer)	FC	
	Ray Morton (painter/decorator)	28	
	Tim's Tiles	20	
<b>Leisure</b>	2DiVE4	BC	
	Elsenham Golf Centre	24	
	Graham School of Dance	26	
	Mitchell School of Dance	12	
<b>Motoring</b>	Broadcastle Motor Contracts	BC	
	D Bonney & Sons	26	
	David Nunn's Garage	20	
	Onward Driver Training	16	
	Rowland Ridgwell (van hire)	8	
	Sterling Chauffeur Services	11	
<b>Personal Services</b>	Alexander Technique	24	
	Barnet Fayre (hairdressers)	FC	
	CK Men's Room	18	
	Fancy Fingers	BC	
	Glynis Cheers (hypnotherapist)	18	
	Grave Concern	12	
	Lower Street Clinic	16, 26	
	Newwin-E Ltd	22	
	NLP Solutions	24	
	Samantha Jane's Beauty Studio	26	
	Slimming World	10	
	Sue Leech (chiropodist)	8	
	The Park Clinic (weight loss)	12	
	Touch	24	
	H C Williams (osteopath)	16	
<b>Printing &amp; Publishing</b>	Copyzone	8	
	Millway Stationery	16	
<b>Property Services &amp; Auctioneers</b>	Aldwych Construction	16	
	Bareham Overy Partnership	15	
	Inter County	BC	
	Mullucks Wells	BC	
	PHD Associates (architects)	24	
	Sworders	BC	
	The Kenneth Mark Practice Ltd	6	
<b>Retailers</b>	Family News	12	
	King's Family Butchers	18	
	R & K News	10	
<b>Other</b>	Stansted All-Steel(gates,railings)	28	
	Ugley Village Hall (for hire)	10	

# UNITED REFORMED

Chapel Hill

**Minister** Rev'd David Simpson  
11 Church Manor  
Bishop's Stortford  
CM23 5AF  
Tel: 01279 504900

**Contact** Mrs Janet Townsend  
58 Chapel Hill  
Tel: 01279 812593

## Preachers for January 2006

1st 2.30pm Rev'd David Simpson  
8th 10.30am Rev'd Martin Cressey  
15th 10.30am Annual Covenant Service  
Rev'ds David Simpson and Keith Page  
22nd 10.30am Leo Cheng - Joint with Methodists  
29th 10.30am Mrs Maureen Kendall

There will be no Afternoon Teas on 1st January 2006.

By the time you read this we will be into another year, I take this opportunity of wishing everyone: Best wishes for a peaceful New Year.

In the run up to Christmas I visited a prison and spent some time talking with the Prison Chaplain, some of the inmates and Prison Officers. All the memories of my prison chaplaincy in Hertfordshire soon came flooding back. The same familiar scenes, high fences, razor wire, security gates, segregation wings and the jingle of heavy keys being turned in stout locks.

There haven't always been prisons in England; at one time we didn't need them because we had found an easier way to deal with wrongdoers. In 1593 we began to transport our convicts to North America and send them away, out of sight and out of mind. However, when America won its independence in 1776 we were left with a problem. So began the era of the Thames Hulks where convicts were held in floating ships in intolerable conditions of squalor and disease and this, so close to home, proved to be a bit embarrassing, especially when the wind was blowing in the wrong direction. However, another opportunity had arisen to shift our responsibility, for by the late 1780s we were once more transporting our convicts, this time to Botany Bay. By 1857 some 102,000 convicts had been shipped to Australia; and at that time Australia was certainly well out of sight and out of mind.

Today the prison population in England continues to rise at an alarming rate and overcrowding is once again a serious problem. Overcrowding significantly raises the stress levels in prisons. In recent decades other factors have placed additional stress on an already creaking system. There is a most concerning increase in the number of women and young people held in prison. There are large numbers of mentally ill people who have fallen through the cracks of Care in the Community and as a result these people, ill-equipped for life in prison put stress on inmates and staff alike. Recently introduced initiatives such as Electronic Tagging, Relational Jus-

tice and Community Service are helping to ease the pressure, but they are treating the effects rather than the cause. Winston Churchill as Home Secretary in 1910 said that "The degree of civilisation of a country can be tested by the way it treats its prisoners".

The Prison Service sits at the extreme end of the Justice System and by its nature is reactionary to the social and political pressures that are placed upon it. Society, hyped up by irresponsible journalism, it would appear, has opted for the philosophy applied at the times of the transportations where offenders are locked up out of sight and out of mind.

The prison system, creaking at the seams, does not make social nor economic sense. A campaign of prison reform is urgently required but it is unlikely this will happen because society is not calling for prison reform, which leaves us with the only other option of continuing to build more prisons at the tax payers expense rather than focussing on the root causes of crime and recidivism.

Prisons disturb our comfort, and a middle-class respectability helps us to look the other way, but we can't really do that because according to the writer of Matthew's Gospel Jesus takes quite a different view (Matt 25: 36-40) "I was in prison and you visited me ... In as much as you have done to one of the least of these my brethren you have done to me." The Gospels indicate that Jesus identified himself with the poor, the under-privileged, the marginalised and the disadvantaged for Jesus, community was all about relationships and responsibility. We are his Church in the world - we cannot look the other way, we must be concerned.

David Simpson

## Music Quiz by Charity for Operation Christmas Child

Over 50 people attended the excellent music quiz, given by 'Charity' on 3rd December at the URC Hall, where a marvellous profit of £324 was raised for the transportation costs of 'Operation Christmas Child' shoe boxes around the world.



Some intense concentration at the quiz?

On behalf of the children who receive the boxes (and we know the pleasure the children get from receiving a box from the videos we have seen) can I say a big thank you to all who supported the cause this year.

Janet Townsend

## Pilots

Our regular membership exceeds 30 children, and our Autumn programme has been a very full one. A Pilot service in September was followed by participation in the Remembrance Sunday Parade and Service. Our Pilots walked with the main processions from Crafton Green to the memorial Gardens, from where they processed into St John's Church with the Pilot Flag, which they presented at the altar during the service.

On 5th December, the Pilots entertained the residents of Mead Court; not a quiet occasion, but we hope a very happy one! Thanks are expressed to Gladys Miller who had prepared a wonderful buffet for both the children and residents alike. Two of our Pilots took part in the 'Celebration of Christmas' on 17th December; Lindsey Barnes and James King read two short poems: 'The Shepherd's Dog' and 'What the Donkey saw'.

The Christmas party was on 19th December, when 'Mr Biscuit', a magician and entertainer, kept the children amused and happy. Many thanks to our helpers, especially Cherry and Rosemary who prepared the delicious food.

Our new term starts on Monday 23rd January.

Valerie Trundle 813433

## METHODIST

Meets in Quaker Meeting House, Chapel Hill

**Minister** Rev'd Keith Page  
2 South Road  
Bishop's Stortford  
Tel: 01279 654475

**Secretary** Mrs Catherine Dean  
49 Recreation Ground  
Stansted  
Tel: 01279 813579

**Email** methodists@stansted.net

**All services start at 9.30am unless otherwise stated**

### Methodist

#### Services and Preachers for January

1st **There will be no service at the Meeting House**  
10am at B. Stortford Methodist - Rev'd Keith Page  
OR  
2.30pm at Stansted URC - Rev'd David Simpson

8th 9.30am at the Meeting House - Michael Render  
15th 10.30am at URC - Annual Covenant Service  
Rev'ds David Simpson and Keith Page  
22nd 10.30am at URC - Leo Cheng  
29th 9.30am at Meeting House- Rev'd John Buxton

On Thursday 12th January there will be a church fellowship meeting.

## ROMAN CATHOLIC

St Therese of Lisieux  
High Lane

**Priest** Father Joe White  
The Presbytery  
St Therese of Lisieux  
High Lane  
Stansted  
Tel: 01279 814349

**Masses** Saturday 6.00pm  
Sunday 9.00am and 10.30am  
Holy Days of Obligation 8.00am and 8.00pm  
Tuesday-Saturday 9.30am

**Confession**  
Saturday 10.00am  
and by appointment

**Baptisms** By appointment

### NEW YEAR

A New Year - a time of reflection, perhaps a time for change. All our lives a process of change is going on. Our life's experiences change us in the way we think, in the way we behave, in what we believe - very little is 'set in concrete'. New technology throws us deeper into commercialism as well as into advancement - evolving is going on relentlessly, and how are we going to cope with these advances? Change does not always mean getting better. Who is to say who is happier? The person surrounded by labour-saving gadgets and physical comfort, or the person who is a peasant farmer in Ghana with few financial or material worries.

Three members of St Theresa's travelled to Ghana this year to renew our friendship with Fr Mike Okyerefo, a Roman Catholic priest. At first, I was concerned with the evident poverty, that is, in my vision. I saw mud huts and reed roofs, people living in community with hardly any material comforts. But what lovely people the Ghanaians are! At first, on passing through the villages in our new 4x4, I felt it presumptuous to wave (a bit like royalty!) but nevertheless did so, and was touched by the excited return of waves and huge smiles on their charming faces. It then became apparent how 'comfortable' they were. Women were preparing the daily meal in community, washing their children in community, chatting while going about their business, but so obvious was the perceived sense of commitment to each other. It was something to be envied!

It is well to reflect at the beginning of a new year how our lifestyle is affecting us. How it changes us, new advances change our way of thinking and we have to rethink how we should cope with all the changes in this wonderful world of ours. How would Jesus do it? He was so inclusive of all - the marginalised: tax collectors, Samaritans, women, prostitutes, the diseased, the bloodied, all were welcomed to his care and attention. It is when we can follow his beliefs that we can cope with change and not be deterred by a changing world where every place is getting more cosmopolitan, where we rub shoulders with different cultures and different ways of believing. Jesus was inclusive of all and these changes are meant to be enriching. He showed us by the people he associated with that we were also meant to be inclusive - of everyone, such as I saw to a minute extent in Ghana.

Our world grows smaller so, as the New Year begins, let our hearts grow bigger to encompass all the changes that will challenge us in the forthcoming year.

Rita Morson



# Rector's diary

## December 1—Needs must

I keep waiting for people to get tired of the wearisome way the pressure goes on at this time of year. We all groan under the brute force of commerce. Watching children's cartoons yesterday, I came away with a headache trying to tune out the commercials of this year's must-haves for children. You wonder what children make if it, suddenly being put upon by things they are told they need which, a few days before, they'd never heard of.

How can they deal with that kind of pressure except to pass it on? What else are they expected to do with it? Maybe that's the underlying dynamic of Christmas: parents are made to go mad so the kids stay sane.

## December 5th—Sentamu

The freedom to be what you are is a great gift, because you can pass it onto others, and they feel they have permission to be themselves too. The enthronement of the new Archbishop of York was John Sentamu being himself. It's not a bad thing to be, though being John Sentamu is hard won. He was a lawyer and judge under Idi Amin and had to flee for his life with his family to this country. Here, he got a PhD at Cambridge in theology before being Vicar of Brixton, South London, Bishop of Stepney and then Birmingham. Sentamu was adviser in the Stephen Lawrence enquiry, and was not backward when it came to raising questions of institutional racism in the Metropolitan Police Force. He must certainly hold the record for being the bishop most often stopped by police, in the days when he was driving around London at strange times.

What struck me was that there was no question that his enthronement would be festive, colourful and noisy in the best African tradition. The freedom to be what God made you is rarer in the church than it should be.

## December 9—Narnia-itis

I can't improve on Giles Fraser's take on children's movies this season. Giles divides his time between being Vicar of Putney and teaching philosophy in an Oxford college. For him Harry Potter wins over Narnia

every time. He doesn't like C.S. Lewis' ready division of the world between good and evil, as if the line can be so confidently drawn.

Giles prefers Dumbledore's counsel to Harry: "Dark times lie ahead. Soon we are going to have to choose between what is good and what is easy." This looks much more like parish life to me.

## December 12—Second runway

The first business of the year will be the public meeting at the Rhodes Centre on January 12th where Stop Stansted Expansion is drawing together MP's Mark Prisk and Sir Alan Haselhurst and others for a public consultation.

If Stansted were Narnia, then BAA would wear the black hats and live in perpetual winter, but the world ain't that simple. The last time I railed against airport expansion on this page, I had indignant letters from airport employees of modest means, deriding me for siding with the well-heeled and those simply protecting their property values.

Our relationship with the airport is an ambivalent one. Some of the longer-established Stansted families settled here as agricultural workers after the war, and the airport took up the slack during the decades when farm automation meant that the costs of human labour could be cut.

A few years ago, there was a golden moment when representatives from Cliffe, Heathrow and, eventually, Gatwick were raising the question of the desirability of more air travel as a general principle. For a while, we were looking beyond local interest to the environmental one. Alan Dean says the environmental cost of air travel remains the fundamental question. It's certainly the way that more people can be persuaded, particularly those who do not live in thatched properties or quaint Essex villages.

AS

### contact us

*all enquiries*

#### The Church Office

St John's Hall  
St John's Road  
Stansted CM24 8JP

(01279) 815243

church.office@stansted.net

#### Office hours

9:00am-12:00noon

Monday, Wednesday, Friday

#### Adminstrator

Mrs Elizabeth Jennings

#### Church Hall Bookings

Mrs Joy Lambe

(01279) 817937

joy@stansted.net

#### Rector

Revd Andrew Spurr

(01279) 812203

rector@stansted.net

#### Assistant Curate

Revd Dr Caroline Currer

(01279) 815243

curate@stansted.net

#### Director of Music

*Currently vacant*

*website*

www.stansted.net/stjohns

## From the Registers

### Baptism:

20th November:

Finley Jack Sweet,

Ellie Alisa Henderson

*There were no weddings or funerals at St John's in November.*



# SHALOM

## Considering Advent with Keith Page – 5th December

Advent is 'coming' with Keith's talk giving us advent (with a small 'a') as both arrival and travelling. Jesus arrived in Bethlehem over 2000 years ago. Was taken to safety in Egypt. Reached his 'coming of age' when we find him in the synagogue in Jerusalem. "Wist ye not that I must be about my Father's business?" (stirrings of ministry?). Came to John for baptism at the Jordan. Began his ministry. Died at Calvary. Rose three days later. Returned to Heaven.

A number of arrivals in a life of constant journeying – a journey that for the Christian Community is yet to be completed. Advent is two Comings – his birth and return. Beyond this, part of Keith's message was all that Christians must journey, go forward, seeking growth in faith.

Harry Goreing

On Monday 16th January we start the New Year with a Prayer and Praise at 7 Blythwood Gardens.

On Monday 30th January there will be a video about the Muslim Haj followed by a discussion. This will also be at 7 Blythwood Gardens

All meetings start at 8.00pm, and you can be assured of a warm welcome. Do join us.

Catherine Dean 813579

## THE WHITECHAPEL MISSION

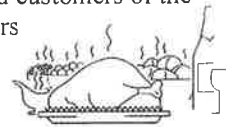
Many thanks to all who have supported the Mission in 2005 by donating clothes, linen, pots and pans, household goods etc. which has enabled us to make regular monthly visits with our cars fully loaded.

Please continue to help - items may be left at the back of St. John's Church (behind the screen at the back as indicated) or telephone 814979 or 834053.

Peter and Rosemary Thomson

## NEWS FROM THE DAY CENTRE

As I write this we are looking forward to a Christmas Lunch which has been made extra special this year by a most generous donation from the Moore Family and customers of the Kings Arms. We are able to have caterers and so our marvellous volunteers can have a rest from serving this year. We are also giving each person attending a small present. Thank you very much Gary and all who helped to raise the money.



Veronica (our cook) and her husband put up the decorations and Veronica and Iris made the lovely table decorations. We are so lucky to have all these kind people to help us.



Brenda Scarr

## WEEK OF PRAYER FOR CHRISTIAN UNITY

Prayers will be led by the Rector, Rev'd Andrew Spurr, at 7.30pm on Wednesday 25th January in St John's Church.. All are welcome.

## SOCIETY OF FRIENDS

Quaker Meeting House, Chapel Hill

**Clerk** Mrs Anthea Lee  
24 Lea Close  
Bishop's Stortford  
Tel : 01279 656707

**Meeting** Sunday, 11.00am

## FROM THE SURGERY



For my second journey into the field of journalism I have decided to promote an aspect of Practice Nursing that is dear to my heart, ie travel advice. Please let me assure you all that booking a holiday abroad can involve visiting places and going into situations that can be fraught with risks. We all want to enjoy our holiday – after all we work all year to save for those precious few weeks. Whether your choice of holiday involves enjoying the sunshine and relaxing or something more active and adventurous, you certainly do not want to waste time in Accident & Emergency Departments or, worse still, in a hospital ward.

It is a good idea to plan a visit to your Practice Nurse when you book your holiday to find out what, if any, vaccinations are advised – ideally six weeks before your holiday gives us plenty of time. We use a regularly updated travel website which gives all sorts of advice, ranging from risks of sun and heat to dietary advice and insect repellents. By giving you a Vaccine Record Book we can enable you see, at a glance, when any booster vaccinations are due.

We look forward to seeing you and hearing about your many varied ways of spending your holidays – it can even make my trip to Bognor Regis seem exotic!

Nurse Carole

## LOOKING BACK

Having been born and brought up in Stansted and now being of quite advanced years one is continually guilty of reminiscences of what life was like in those days. It was mentioned that I should commit some of my memories to print so here are some 'disconnected' jottings.

Stansted was a good place to be brought up in. There was a great community spirit, everyone seemed to know everyone and life seemed simpler in those days. I lived in Chapel Hill, opposite my house was Ecclestones, the chemists and I remember the big bottles of coloured water in the window. There were lots of wonderful characters. I only touch on some of them as they merit an article in its own right.

There was Joe Childs who was a bit of a wizard with electrics. He did the 'sound system' at the various outside events with his Austin Ruby sporting two very large trumpet shaped loudspeakers fixed to the roof. I believe the original speakers are still in existence.

A well known figure who umpired Stansted's cricket matches was Giant Turner, so named because of his small stature. On the subject of cricket, here were some wonderful characters, none more so than Bill 'Coogan' Morton, who loved his cricket and, like me, played in the 2<sup>nd</sup> Eleven. He used to stop the cricket ball with his shins and I never ever saw him wince. He used to bowl with a round arm action which could be considered a bit suspect but nobody ever complained. We would often drive to away matches in the back of his pick-up and he would drive like the wind causing us to hang on like grim death in the back as we hurtled round the narrow country roads.

Stansted football club played in the Spartan League and as a boy I was an avid supporter. I can still remember the smell of liniment wafting from the changing rooms. I well remember Ernie Pavitt who, although getting on a bit, used to be a mainstay in the side, often coming up from defence to score vital goals.

There were some great shops, most of which no longer exist. Down the hill was Eric Poole's, newsagent and tobacconists. Eric used to call me Dicky Tarpot and he would regale us with some wonderful stories, such as telling us that a cat had been run over on the hill and Len Boothby, the butcher, was out like a shot and it was in the sausage machine before you could say Jack Robinson.

Next door was Mumford's selling a varied selection of foods and goods. Across the road was Matthews Cycle Shop. At the back of the shop Dennis repaired cycles and we lads often used to visit Dennis as he worked. Then there was Ernie Wenn, the hairdresser, who I remember was very good at short back and sides. Men used to come in and mutter a packet of .... I used to wonder what was so secretive; such is the innocence of youth. On the corner Miss Stacey had a shop. She had a wonderful machine with a large rotating disc which played a tune when you inserted a penny. She also sold penny packets of broken crisps which were very popular. Over the road was Buntings the greengrocers and florists. Mr Bunting was my uncle and I can remember going out in the pony and trap with my cousin Doug on deliveries.

There was Turners shop, run by Ken and Ron Turner. They sold superb cheese and homemade sausages. Opposite the Dog and Duck was Arthur's Café, run by Arthur and Charlie. I recall that there were some wonderful pin up pictures in the serving area, some topless!!

In Silver Street was Miss Rose's sweet shop where you could get a selection which you don't see today. We used to ask for 2oz of jelly babies – all boys. Next door, opposite the Windmill pub, was Eric 'Nipper' Player, the cobbler. It was said that there was a groove in the road between his shop and the Windmill pub. At the top of the hill Irene Mant had a sweet shop, nearly opposite the fountain where the elders of the village used to pass the time away sitting on the seat there, often being entertained by the local constabulary directing the traffic at the crossroads. Further down the hill there was Pearson's bakery and shop. I remember buying beautiful bread freshly baked during the night by Mr McCartney.

Along Cambridge Road was Frank Bulls Garage. There was also Mayhew's Garage who also had a garage in Station Road. They had a 'fleet' of buses. The 14 seater Chevrolet was a well known little bus. I can remember the great excitement when a modern Commer coach was added to the fleet. We loved travelling in the Commer on school trips, driven by Arthur Bishop. Also in Cambridge Road, Miss Kitson had a toy shop, very popular with us kids. Next to the toy shop was Walter Bedlow, the Cartwright. We often used to watch Walter at work. I am told he used to go into Bishop's Stortford once a week to place bets for the local men at Kent's betting shop.

*To be continued ....*

Dick Pollard

### THE KENNETH MARK PRACTICE LTD CHARTERED ARCHITECTS, SURVEYORS, PLANNING SUPERVISORS

A SMALL FRIENDLY COMPANY OFFERING A FULL RANGE OF SERVICES

#### INITIAL CONSULTATION FREE



Winstanley House  
4 Market Hill  
Saffron Walden  
CB10 1HQ

Tel: 01799 521734 / 506011  
Email: Kenneth.Mark@btconnect.com

#### PLAN PRINTING SERVICE AVAILABLE TO THE PUBLIC / BUSINESSES

Good quality black and white photocopies from your  
originals A4 to A0 size

CAD plotted drawings also available up to A1 size





**Uttlesford District Council 2006 Skip Dates**  
**Green Waste, Metal & Wood**

9 am - 3 pm Saturdays only until further notice

7th January

4th February

21st January

18th February

**Skips also available daily at Bishop's Stortford, Harlow  
 & Saffron Walden for all household waste**

**VILLAGE EVENTS**

**January**

4	Wed	Mountfitchet Seniors	Day Centre 2 - 4 pm
5	Thu	Bookstart	Library 2.15 - 3 pm
		Local History Society	Day Centre 8 pm
7	Sat	Green waste, metal & wood	Lower Street car park 9 am - 3 pm
12	Thu	WI	St John's Hall 7.45 pm
14	Sat	Lib Dem Ploughman's	Day Centre noon - 2 pm
16	Mon	WEA course begins	Day Centre 7.30 pm
		Shalom Prayer & Praise	7 Blythwood Gardens 8 pm
18	Wed	Mountfitchet Seniors	Day Centre 2 - 4 pm
21	Sat	CTS Quiz for Chevetogne	St John's Hall 7 for 7.30 pm
		Green waste, metal & wood	Lower Street car park 9 am - 3 pm
27	Fri	Lib Dem Cheese & Wine	Churchmead, Widdington 8 pm
28	Sat	Bernard Roberts Masterclass	St John's Church 4 pm
29	Sun	Burns Lunch	Day Centre 12.30 for 1 pm
		Village Music Club	St John's Church 3 pm
30	Mon	Shalom Group	7 Blythwood Gardens 8 pm
31	Tue	Uttlesford Airport Survey	Mountfitchet School 8 pm

**February**

1	Wed	Mountfitchet Seniors	Day Centre 2 - 4 pm
		Mountfitchet Garden Club	Day Centre 8 pm
2	Thu	Bookstart	Library 2.15 - 3 pm
		Local History Society	Day Centre 8 pm
4	Sat	Green waste, metal & wood	Lower Street car park 9 am - 3 pm
5	Sun	Afternoon Tea (after service)	UR Church 3.30 - 5 pm
9	Thu	WI	St John's Hall 7.45 pm
11	Sat	Lib Dem Ploughman's	Day Centre noon - 2 pm
13	Mon	Shalom Group	United Reformed Hall 8 pm



**Stansted Branch**  
**SPRING COURSE**

7 lectures & 2 field trips

*The Future for two*  
*Historical Essex Estates*  
 by Susan Brice

*Enrolment:*

Monday 16 Jan 7.30 pm  
 Lectures thereafter at 8 pm  
 Fee £33 Concessions £23.50

**Stansted Day Centre**

*All are welcome*

Secretary: Harold Thistle 813250



**QUIZ**  
**NIGHT**

in aid of  
 Chevetogne  
 Exchange Visit

**7 for 7.30 pm**  
**Sat 21st January**

**St John's Church Hall**

Refreshments Provided  
 Bring your own drink & glass  
 Raffle

Tickets £5 Concessions £4  
 Tel Eileen Quinn 812109  
 or Dave Morson 850209

Helen Rollason  
 Head Cancer Charity



**QUIZ**  
**NIGHT**

**Saturday 25th February**  
 7.30 for 8 pm  
 Stansted Day Centre  
 Tables of 6  
 Bring your own drinks  
 £6 incl ploughman's  
 Tel 813871

**St John's, Stansted**

**Burns Day Lunch**

12.30 for 1pm Sun 29th Jan  
 Day Centre, Crafton Green

Real Scottish menu including  
 delicious Scottish puds etc!  
 Raffle

Prize for best dressed Scotsperson  
 Adult £8 Child £4 Family £20  
 from Church Office 815243  
 (Mon, Wed, Fri 9am - noon),  
 or Rosemary 834053  
 or at church after Sunday Services

**Bring your own drink and glass**  
**Everyone Welcome**

Proceeds to Children's Corner Refurbishment

 **BERNARD**  
**ROBERTS**

**Piano Masterclass**  
 4 pm Sat 28th January  
 St John's Church

Tickets £5 payable at the door

**Concert**  
 3 pm Sun 29th January  
 St John's Church

Programme includes Mozart,  
 Beethoven & Rachmaninoff

Tickets £10 adults £3 children from  
 Stansted Carpets, Nockolds B.S.  
 Options Hairdressers Elsenham,  
 Sonia Levy tel 815282 or at the door



23-25 Lower Street, Stansted

We offer a range of paints, adhesives, hand tools and associated accessories.

Timber can be ordered and cut to size

Open: Tue - Fri 8.00 - 18.00 Sat 9.00 - 14.00

Specialist items can be ordered in store

Tel: 01279 816611 www.mountfixit.co.uk

## D HONOUR & SON (LANDSCAPE)

GARDEN DESIGN AND CONSTRUCTION

- Ground Preparation · Paving · Planting
- Brickwork · Lawns · Fencing

British Association of  
Landscape Gardeners



PHONE OR FAX

01279 813160



59 Blythwood Gardens, Stansted

## Kate Harrison

Made-to-measure curtains, pelmets, blinds, loose covers, cushions, bed covers and valances,

I can supply fabrics, trimmings, tracks and other accessories.

Please call for free advice and measuring service.

Tel / Fax 01279 777452

email: kateharrison\_1@yahoo.co.uk



## MERCER & HUGHES

Veterinary Surgeons

80 Cambridge Rd, Stansted. Tel 01279 813780

Surgery Hours

Mon - Fri 8.30 am - 10.30 am

4.30 pm - 7 pm

Sat 8.30 am - 10 am

Also surgeries at Saffron Walden & Dunmow



Sue Leech MSSCh MBChA

HPC Registration No: CH 17977

Chiropodist

9, Mill Road, Henham

Appointments 07881 942836

Surgery and Home Visits



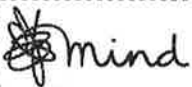
## A Holiday in Spain?

FOR RENT ☎ 01279 647591

3 bedroom house, in complex with own pool on the Costa Blanca (Sleeps 6)

6 minute walk through park to Blue Flag Beach Shops and Restaurants nearby

Stansted - Alicante / Murcia Airports (only 30 mins from house)



For better mental health

## Uttlesford Mind

Information & support for people with mental health problems  
Advocacy ~ Befriending ~ Drop-in centres ~ Counselling

Weekly Drop-ins: Saffron Walden, Thaxted, Stansted & Dunmow

Volunteers are always welcome

Tel: 01371 876641

Charity No: 1023708

## VAN HIRE

Rowland Ridgwell Ltd

Woodview Garage, Stansted Rd, Birchanger

Tel 01279 654408

- ◆ £44 + vat per day
- ◆ £80 + vat per weekend (Fri night to Mon am)
- ◆ £240 + vat per week

Fully Insured ~ Unlimited Mileage

YOU'RE..... FURNISHED  
Famous Branded Furniture at

**HALF PRICE**

NEW STOCK IN EVERY WEEK

Rear of 14 Cambridge Road, Stansted 01279 815028

Mon - Sat 10 am - 5 pm Sunday 11 am - 4 pm

Also new warehouse at Takeley



## Copyzone LIMITED

...for bright ideas!

Specialist in Digital Printing & Copying

T: 01279 657769 F: 01279 503151

E: info@copyzone.co.uk

W: www.copyzone.co.uk

Unit 3, Southmill Trading Centre, Southmill Road, Bishop's Stortford, Herts. CM23 3DY

## TWO QUESTIONS NEEDING ANSWERS

It is at best cold comfort to see from Councillor Alan Dean's item under Uttlesford District Council that we may have a post office in the spring of 07 - another 15 months if things go well. What about the "possibility of a temporary counter" which was mooted last year - or the mirage of a mobile PO becoming reality? That would be encouraging New Year news - but it's not what we hear. Do the Post Office realise the difficulties that this long absence creates, or the fuel consumed in going elsewhere?

From this year on we will be receiving further tidings on the progress of the Rochford development. Until it materialises we shall not know whether the 2000 or more new residents will look to Stansted or Birchanger as being the place to which they belong or whether they will, like the Stoney Common community of yesteryear, see themselves as a distinct people and make their own nucleus. The least desirable scenario would be for the area to have no sense of belonging and drift towards Bishops Stortford, or even Harlow, for its cultural and social needs. In any eventuality it would be helpful if we could hear from the District or either of the Parish Councils as to what building(s) and facilities are envisaged to provide a locus and how they may be serviced. The Stansted Churches expressed their interest over two years ago but since then little has been heard. Without a welcoming place to meet there would be a void which we should later regret. Can one of our Councillors enlighten us?

Derek Honour



BAA has now published its preferred option for a second runway (see Uttlesford District Council article). The likelihood of planning permission being granted for a second runway is extremely slim given that three Government Inspectors in the last 30 years have ruled against extra runways at Stansted, most recently in the 1980s when it was judged that any second runway at Stansted, in any position or location, would be an environmental catastrophe.

There is still no evidence that an expanded Stansted would benefit the economy. Official Government statistics show that air travel was responsible for a £15 billion balance of payments deficit for Britain last year. In 2004, British residents made more than 50 million overseas trips by air compared to only 20 million overseas residents flying in to visit Britain. The Government needs to explain how it benefits our economy to subsidise an Irish airline buying American aeroplanes to transport millions of British people to spend their money abroad.

Proposals for a second runway at Stansted Airport are opposed by over 100 local parish and town councils, district councils, the East of England Regional Assembly and every MP and MEP in the region, irrespective of political party.

There are major questions over the robustness of Stansted's financial and market position given that it is highly dependent on two customers, Ryanair and Easyjet, which together account for 90% of its business. They were attracted to Stansted because it was the cheapest show in town but Ryanair in particular may well move elsewhere if a better deal is available. Stansted currently earns only a 4% return on investment and most of that comes from car parking - which is already one of the biggest planning issues facing BAA at Stansted. Cheap flights depend on cheap oil and upon the continuation of the airline industry's blanket exemption from fuel duty and VAT - and the absence of any environmental tax. There are doubts over how much longer this tax-free bonanza can last when in the UK aviation is the fastest growing cause of global warming.

### Aviation Minister Briefed On 'Stansted Carport'

Reducing the amount of road traffic in and out of Stansted Airport was top of the agenda at a meeting at the end of November between Stop Stansted Expansion (SSE) and Government Aviation Minister Karen Buck MP, arranged by local MP Sir Alan Haselhurst.

More than 70 percent of Stansted users travel to the airport by road and the airport already has more car parking provision than Heathrow and more even than Atlanta, the world's largest airport. BAA's car parks at Stansted earned over £32 million last year out of Stansted's total profit of £45 million. SSE sought the Minister's support for a 'Lo-car' strategy for Stansted aimed at reducing the amount of car traffic generated by the airport and pressed for proper investment in the rail network so that it could handle a bigger share of airport users without cutting back on services to local commuters. She was also pressed to support restrictions on airport car parking, for measures to combat local fly parking and to support Essex County Council's proposal for an airport access levy.

The Minister confirmed that SSE's proposals were fully consistent with the Government's policy of getting people out of their cars and onto public transport and that responsibility for paying for any improvements to the rail infrastructure to serve the needs of Stansted Airport rested with BAA. Sir Alan Haselhurst referred to "years of chronic underfunding" on the main rail line to Liverpool Street and to BAA's failure to support the level of rail investment necessary to accommodate the growing number of airport passengers. The result was that services to many local rail users were now being cut back and this was wholly unacceptable. SSE Campaign Director Carol Barbone described the meeting with the Aviation Minister as non-confrontational and constructive. "Whilst reaffirming SSE's outright opposition to the unsustainable expansion of Stansted Airport there was a meeting of minds on the unacceptability of 'Stansted Carport'," she said.

Carol Barbone,  
Campaign Director 0777 552 3091  
See also [www.stopstanstedexpansion.com](http://www.stopstanstedexpansion.com)

*Slimming*  
WORLD

Join a warm and friendly group near you

**STANSTED MOUNTFITCHET**  
WEDNESDAYS 7.00 pm  
PAM ☎ 01279 842774

**BISHOP'S STORTFORD**  
WEDNESDAYS 9.30 am, 5.30 & 7.30 pm  
KIM ☎ 01992 584286

**SAFFRON WALDEN**  
THURSDAYS 6.30 pm  
JANE ☎ 01440 709822

**NEW!**  
**mix2**  
**max**

**NEW!**  
**success**  
**express**

**HURRY!**  
**great**  
**offers**  
end soon

*The UK's No.1 Lawn Treatment Service*

4 annual treatments to create a  
**healthy, lush, green**  
lawn.



**Costs less than DIY**

For your **FREE** no obligation  
lawn analysis report and quotation  
call your local GreenThumb on

**01440 713838**

**GreenThumb**  
LAWN TREATMENT SERVICE



[www.greenthumb.co.uk](http://www.greenthumb.co.uk)

**STEVE HALL**  
**GARDEN SERVICES**  
**CALL FOR HELP IN YOUR GARDEN**  
**Tel 01279 817739**  
**Mobile 0777 8049063**

**HIRE THE NEWLY REFURBISHED**  
**Ugley Village Hall**  
With two halls, ample parking, facilities for the disabled and competitive rates, the refurbished Ugley Village Hall on Cambridge Road is ideal for clubs, classes, functions, children's parties and social meetings.  
Bookings or further information please call Susan Bone 01279 814052

**CARERS UK**  
*Uttlesford District Branch*  
"Caring about the Carer"  
Support group for carers held in  
Stansted Quaker Meeting House, Chapel Hill  
on 2<sup>nd</sup> Thursday in each month from 2 pm to 4 pm  
**For further information call us on**  
**01371 875810**  
Registered Charity No. 246329

**Fabrications**  
*is the local company for all soft furnishings,  
made from our fabrics or your own.  
Wallpapers, tracks and blinds also supplied.*  
*For free advice and measuring service call*  
**Sue 01279 777465 or Carol 01279 777480**

**J DAY & SON**  
**MONUMENTAL MASONS**  
Stone Works, Station Road,  
Bishop's Stortford  
Tel 01279 654555 or 653450

**R & K NEWS**  
Newsagent & Tobacconist  
Home Delivery Service  
Newspapers & Magazines  
5 Lower St, Stansted  
Tel: 01279 647280

**NEW LOOK**  
**UPHOLSTERERS**  
Antique & Modern Furniture  
Upholstery Specialists  
Domestic / Commercial  
Hotel & Contract Work  
Full Repair Service.  
Wide range of fabrics & accessories  
French Polishing  
*Free quotes - Collection & Delivery  
Professional Workmanship  
Excellent Prices*  
**01279 816222**  
34 Stoneyfield Drive, Stansted CM24 8PA





## BENTFIELD COUNTY PRIMARY SCHOOL

As always the weeks leading up to Christmas are packed with so many varied activities that it's difficult to know where to start. There have been visits out: Reception went to the Fire Station, Class Two have been to Saffron Walden Museum, Class Five have been to Duxford and Class Four went to the cinema to see the film version of 'The Lion, the Witch and the Wardrobe', a book they have been studying this term. Within school we held a non-uniform day for Children in Need and raised the wonderful sum of £247.07. Well done to everyone. Classes One and Two have received a visit from Uttlesford Road Safety Officer Vivienne Harris. We went crafty at the beginning of the month with Foundation Stage having a Glitter morning, and the whole school having a Christmas Craft morning. All great fun but just a bit messy!

Our brass teacher, Steve Drury, entertained classes 3, 4 and 5 with a superb demonstration of a variety of brass instruments. The children were encouraged to have a go and see what sounds they could achieve. Maybe a few musical talents will be awakened! Steve was ably assisted by one of our mums - Mrs Kadir.

We again had a treat when Puppets Galore visited and got the whole school thinking about the Christmas story. Both Foundation Stage and KS One have put on productions, which were well received by everyone. The children had a delicious Christmas dinner cooked by Manda and Jo (good luck with the baby). Of course we also had parties, and the amazing Staff Pantomime - yet again it was unbelievable! We welcomed Rev'd Andrew Spurr to our Carol Service to complete the festivities.

Finally, we sadly said 'Good-bye' to our Deputy Head-teacher, Sue Giles, who left us to take up the post of Headteacher at Cressing School. Farewell Sue, you take with you all our best wishes.

If you are interested in either a Nursery or Reception place in September 2006, and would like to visit the school, please give us a ring and we would be very pleased to arrange one for you.

### News from the PTA

The PTA was very busy too in the run up to Christmas! Our Christmas Fair raised over £1200 to add to the PTA coffers. We were helped by a small army of people before, during and after the event and we are extremely grateful to everyone who contributed time and effort to help make it such a successful afternoon. The school was looking fantastic, with the stunning collaborative works of art created on the Craft morning greeting visitors in the school entrance, and literally dozens of festive foliage wreaths hanging everywhere! In the school hall the focal point was the lovely Christmas tree - children at Kids' Club had had a lovely time helping to decorate it the previous evening! Next to the tree was an impressive array of raffle prizes, most of them donated by local businesses.

All the old favourites proved as popular as ever: tombolas, second hand toys, our perennial visitors Darley Plants, cards, crafts, face painting, wonderful homemade cakes and mince pies. There were also plenty of games and activities for the young and young at heart. The longest queue was often for the chance to beat the Headteacher at Connect 4! For many younger children, of course, the highlight of the afternoon was visiting Santa in his magical grotto. This year most of them had their photographs taken with Father Christmas as a lovely souvenir of their visit.

We also had superb live entertainment from the school choir and recorder groups who performed carols and seasonal music for the very appreciative audience gathered in the hall. Several children also performed solos or duets on a wide variety of instruments. All the children and teachers involved should be proud of their contribution to the lovely atmosphere, as should our wonderful MC, who is worth his weight in gold. We were very pleased to have a number of people taking part in the fair for the first time and hope that they enjoyed the experience enough to come back again next Christmas. We are extremely grateful to them, and to everyone else who gave up their time to make it such a great day.

So here we are at the beginning of another New Year, full of energy and looking forward to organising some new events this term. We are planning to put on a disco for the grown ups before Easter - so dig out your dancing gear and get ready to strut your stuff! Watch out for details in 'The Link' and around the village.

Alison Thompson  
PTA

## STERLING CHAUFFEUR SERVICES



Our luxury, air-conditioned Mercedes people mover comfortably seats eight passengers and has the advantage of a cavernous luggage compartment. Executive Saloons also available.

Please contact Ray Barry for further details:  
**Telephone: 07779259489**  
**e-mail: millview.sterling@btinternet.com**

We are fully licensed by Uttlesford District Council

### STOP PRESS

The annual Celebration of Christmas at St. Mary's Church on 17th December included contributions from the two Primary Schools. It was well supported with the collection being divided between the Church's Conservation Trust and the Motor Neurone Fund.

## Mitchell School of Dance

Mrs Mitchell LISTD Dip AISTD AES Dip  
Fully qualified and registered teacher.

*Dancing Displays Examinations  
Choreography National Competitions*

Classes at:

St. John's Church Hall, Stansted  
St. Mary's Church Hall, Birchanger

Tel: 01992 81 2781



Relax... Re-energise... Rebalance...

with one of our health-enhancing,  
stress-reducing treatments

### **Indian Head Massage Reflexology Kinesiology**

(integrated, non-invasive healthcare.  
detects and rectifies physical and emotional  
imbalances, detects food sensitivities  
and accurately determines best nutrition)

...or ask about our weight loss/detox  
programmes

Call Judy on **01279 321726** to book

[www.parkclinic.org.uk](http://www.parkclinic.org.uk)  
[info@parkclinic.org.uk](mailto:info@parkclinic.org.uk)

ARE YOU UNABLE TO  
ATTEND TO A LOVED ONE'S  
GRAVE OR MEMORIAL?

### GRAVE CONCERN

*family business*

OFFER CARE,  
MAINTENANCE  
AND UPKEEP OF  
FAMILY MEMORIALS  
AND GRAVES

BROCHURE WITHOUT OBLIGATION  
01371 870 685



## GARDEN DESIGN

Liz Elfick-Wood (Dip GD)



Professional design service  
from single consultations  
to landscape design and  
planting plans

Tel: 01279 815425

## M COLLINS Family News

NEWSAGENT TOBACCONIST

CONFECTIONERS

AGENTS FOR DRY CLEANERS

Chapel Hill, Stansted

Tel 01279 812049

## Chartered Accountants Davidson Oakley & Co

We provide a friendly and efficient professional  
accountancy and taxation service for local  
businesses and individuals including:

*Self Assessment Tax Returns*

*Accountancy and Audit*

*Management Accounts*

*Business Tax*

### **Free Initial Consultation**

Please tel 01279 813294

Forge House, 39-41 Cambridge Rd, Stansted CM24 8BX

Protect and  
preserve with  
Knights Windows **No more repairing  
or painting...**

PVC-U  
replacement  
fascias, soffits, guttering, bargeboards  
and cladding

#### Knights Windows:

- ✓ Completely maintenance free
- ✓ Will not warp, crack, discolour or blister
- ✓ Resistant to weather and other pollutants
- ✓ Enduring quality
- ✓ Choice of finishes
- ✓ All work guaranteed

*We'll be pleased to provide you  
with a professional, free quotation,  
no matter how large  
or small the job.*

*John Newman*  
Managing Director

**Call us now,  
FREE, on  
0800 294 0652  
and make  
painting a thing  
of the past!**

The Courtyard  
Forest Hall Road  
Stansted Essex  
CM24 8TS  
01279 647999

## JOYS OF THE FESTIVE SEASON ?

It seems strange to be writing this before Christmas, knowing that it won't be read until January when such a huge amount will have gone on in between. We are traditionally a little quieter with regard to routine work in December and January but an emergency is an emergency whatever the time of year. Of course, at Christmas time we often have a few traditional emergencies as well; there's the traditional Christmas Eve emergency, "help, my dog's just eaten the turkey, I left it out to defrost". There's the traditional Christmas Day emergency, "help, my dog's just eaten the turkey, I took it out of the oven and my back was turned for 10 seconds" and, of course, the traditional Boxing Day emergency, "help, my dog's just eaten the turkey, I left it out while I was making sandwiches". Needless to say your dog will probably be fine. In my experience it will do one of three things:

- a) Slink off looking very guilty but also rather pleased with himself
- b) Slink off looking decidedly uncomfortable and spend the rest of the day passing wind under the dining room table
- c) Slink off and vomit violently over mother-in-law's feet during the Queen's Christmas message in which case a call to the emergency vet may be in order!

The other sort of overindulgence that goes on at Christmas is eating too much chocolate. This can affect animals as well as humans. The other guaranteed phone call we get at this time of year is "help, my Labrador (and let's face it, it's nearly always a Labrador) has just eaten a box of chocolates". This can be more serious as chocolate contains a substance called theobromine which is toxic to dogs when eaten in large enough quantities. The darker the chocolate the more theobromine it contains, so dark chocolate can be more toxic than white chocolate. Cocoa powder also contains theobromine and so do cocoa shell mulches that are occasionally used on the garden. The symptoms of chocolate poisoning are vomiting, thirst, restlessness, hyperexcitability, salivation and becoming unsteady when walking. This can progress in severe cases to blood in the urine, heart arrhythmias and convulsions; several deaths due to chocolate poisoning have been reported. The symptoms usually occur within three to four hours of the dog eating the chocolate and may last up to three days. If you suspect your dog has eaten a large amount of chocolate and is showing any of the above symptoms it is very important to call your vet immediately. Sometimes just making the dog vomit is enough to get rid of the chocolate before it is broken down and absorbed, but if several hours have elapsed, the dog will need specialist treatment and hospitalisation. This will usually mean being put on a drip and receiving particular drugs to stop the possible heart problems and convulsions.

To put this in perspective (before the sales of Cadburys plummet!) - a dog does have to eat rather a lot of chocolate for it to be poisonous. We're talking about a whole box full not just the odd one, but I guess it is a warning not to offer dogs any chocolate at all. They don't need it as an essential part of their diet (like we do!).

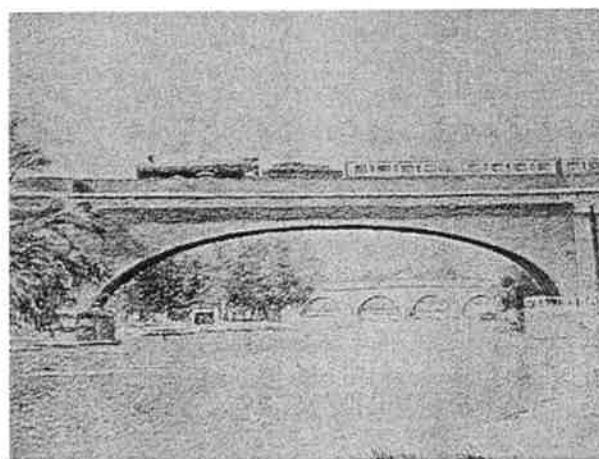
On a happy note we did have a dog with chocolate poisoning in at our hospital in Saffron Walden in November. It sur-

vived and is now fit and well thanks to the intensive treatment and nursing care it received, and yes, it was a Labrador!

Ilse Pedler,  
Partner, Mercer & Hughes,  
Veterinary Surgeons

## OLD STYLE v NEW STYLE

The picture shows Brunel's railway bridge across the River Thames near Maidenhead, built during the mid 19th century. It caused much speculation at the time because it was a wide, shallow arch constructed entirely of bricks and many people, engineers included, thought the design was stretching things too far and it was sure to collapse. Brunel got it right, of course, and it carries the railway to the West country to this day.



Closer to home in Chapel Hill one can see similar arches over the windows of the Old Post Office. These are just two examples of the superb late Victorian brickwork to be found all over Stansted, particularly over doorways and windows. If you are walking near the Fountain, or Chapel, crossroads, take a good look at the brickwork over the old carriage entrance on the side of Linden House Antiques, No 3 Silver Street. Next look on the other side of the road at the modern brick arch over the entrance to the courtyard in Hermitage House. Discuss, as they used to say in the exam papers.

Felix



**STANSTED & DISTRICT  
LIBERAL DEMOCRATS**

Our next ploughman's lunches will be on Saturday 14th January, and Saturday 11th February, 12 noon to 2.00pm, at the Stansted Day Centre. All are welcome.

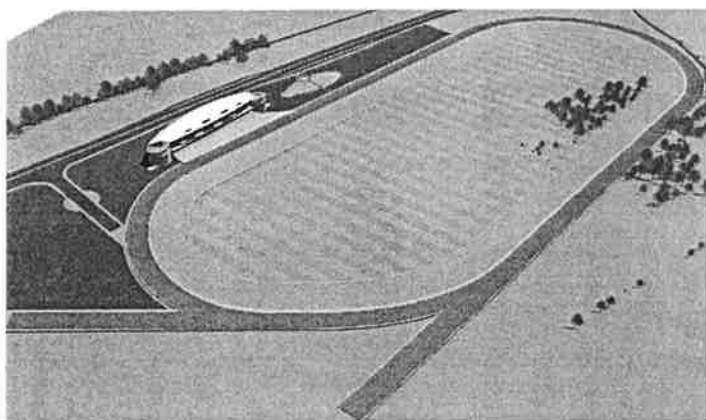
Our first event in the New Year will be a cheese and wine party on Friday 27th January, 8.00pm onwards, at Churchmead, Widdington. For further information, please ring 814222 or 813432.

Ruth Rawlinson

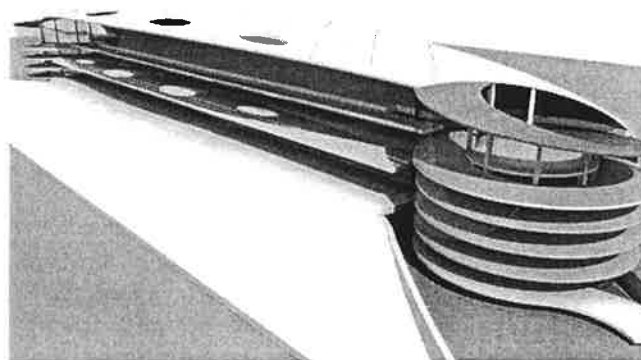
## GREAT LEIGHS RACECOURSE

From having no racecourse, Essex is making a quantum leap this year, by having a state-of-the-art course and allied facilities that will influence the equestrian scene on this side of the county and beyond. We are indebted to the Great Leighs Racecourse promoters and to our contemporary, the Great Notley Times, for permission to reproduce this article (Ed).

No-one has created a new racecourse in the UK since 1927. But all that is set to change in 2006 with the opening of Great Leighs, a purpose-built floodlit track just 15 minutes from Stansted. Great Leighs occupies the site of the former Essex County Showground, north of Chelmsford, and will be more than a racecourse. Its wider remit as a destination will provide this growing area of mid-Essex with much-sought conferencing, business to business and fine dining opportunities 365-days a year. The recent acquisition of adjacent Moulsham Hall Farm doubles the land holding to 450 acres and creates the unique opportunity for a bolt-on equestrian park of global importance as well as the revival of Essex County Show. Already there is a lobby – championed by the international course-designer Capt Mark Phillips – for Great Leighs to host the equestrian events of London 2012, should initial plans for Greenwich Park fall through.



An aerial view of the track



The new grandstand

Promoter of Great Leighs racecourse is Essex-born entrepreneur John Holmes, who aims to improve upon the horseracing industry's blueprint for new racecourses, as well as providing the local community with a destination of which they can be justly proud. Floodlit and daytime racing is scheduled to commence twice a week on October 6, 2006, with the public areas up and running. During the winter the fit-out of the upper levels of the state of the art, five storey grandstand will be completed to offer 40 hospitality boxes, pitched at corporate lets, a 750-seater dine and view restaurant and banqueting facilities for up to 1200, ready for a gala 'official' opening of the completed facility in spring 2007. A feature of Great Leighs will be the first UK racecourse-based sports betting hall that is open on non-racing days, offering visitors the chance to watch and wager on major events like cricket, football, rugby and motorsport on a big screen. All this will be backed up by the hospitality expertise of Sodexo Prestige Ltd, who have signed an unprecedented 20-year contract with Great Leighs.

A racecourse at Great Leighs was mooted by John Holmes over five years ago, and necessary consents were acquired with the assistance of the visionary planning department at Chelmsford Borough Council. Originally John had Turf racing ambitions, but radical changes in the racing and gaming industry saw Great Leighs evolve into an all-weather, floodlit track which will be among the first to pioneer night-time racing in the winter of 2006-2007. The floodlighting will be provided by Musco Lighting (Europe) Ltd provides lighting on columns only half the height of some sports stadia elsewhere. They will create a seamless 'halo' of light to minimise night-time pollution, while meeting Jockey Club specifications for both horse racing and Great Leighs' on-site horse training facility. The training yard will comprise the second phase of the development and is already attracting interest from Newmarket-based trainers who would variously like a 'satellite' base at Great Leighs, or to move to the area full-time. The racetrack surface will be Polytrack, a sand, gel and synthetic granule mixture now in use at Lingfield Park and Wolverhampton racecourses and at most of the main training gallops in Newmarket and Lambourn. Great Leighs will have the latest generation of this globally acclaimed surface, and representatives of Great Leighs went to Keeneland racecourse in Kentucky, USA, during the spring of 2005 to see it undergoing new trials. John Holmes commented: "The British Horseracing Board flagged up its 'world class' expectations for Great Leighs in its annual report. I am determined that they should be fulfilled." Keep up to date with developments on [www.greatleighs.com](http://www.greatleighs.com).





## STANSTED MOUNTFITCHET LOCAL HISTORY SOCIETY

This month, as Christmas approaches, we were pleased to welcome members of Manuden Local History Society to share the occasion with us once again. By tradition, the visitors provided the food while the hosts supplied the liquid refreshment. The theme for the food was the Second World War and a great deal of trouble had been taken to find old wartime recipes and to use only ingredients which would have been available at the time – and it tasted very good!

The reason for concentrating on this period of recent history was the subject of our speaker's talk. Ian Valentine became the Site Ranger at Audley End House three years ago and discovered that the history of the building from the seventeenth century was well documented. He learned, however, that Audley End had been important in more recent years and that this was not so well known. The results of his researches he shared with us.

At the outbreak of war the Braybrooke family offered Audley End to the War Department as a hospital but it was turned down as unsuitable. In 1941, however, it was requisitioned for use by the Special Operations Executive (an organisation set up by Winston Churchill to promote disruption in the areas occupied by the enemy) as a training school. First used briefly by the Dutch and then the Danish forces, Training School 43 was set up for the Poles to give advanced training before agents were returned to Poland to lead their fellow countrymen in sabotaging the German occupiers. The Polish underground movement was 24,000 strong, the largest in Occupied Europe, and 500 were trained at Audley End before returning to their homeland – a journey which too often finished in a German Concentration Camp.

Initial training was given at various locations in Scotland and agents came to Audley End for advanced tuition. This was in the form of two courses, one in underground warfare and the other for briefing on the conditions under which they would be working, including how to resist Gestapo questioning. Failure in any one element of a course resulted in the student's return to his army unit. Ian had spoken to many of the Poles who had successfully finished the courses and been parachuted back as agents both here and in Poland and all were enthusiastic about their time at Audley End, even though there had been several casualties in the course of their training. He told us of their recollections and of the conditions of the time. There was a cadre of 50 British soldiers, no longer fit for active duty, who ran the House, although most of the instructors were Polish. Sports were played between the Poles and the British and they were described as 'robust'! Agents eventually were transferred to RAF Tempsford, from where they were flown to be parachuted into Poland. Pictures of the time showed that the gardens and grounds were impeccably kept, although one showed that by 1947, two years after the House was de-requisitioned, it had deteriorated.

Ian has published a book on this period of Audley End's history so that more people should know of these remarkably brave men and one woman – perhaps the motto of Training School 43 explains why it is not better known. Translated from the Polish, it is 'Silent and Unseen'. We were very grateful to Ian for coming to tell us such a fascinating story.

Our first meeting in the New Year will be on 5th January and will be our annual Members' Meeting when the speakers will be recruited from among our own number. I haven't heard yet what the subjects will be but they have never failed to interest so far. We hope that you will be joining us and meanwhile wish you all the compliments of the season.

Ian Seavers



## UGLEY WOMEN'S INSTITUTE

We met earlier last month - on the first Wednesday instead of the third - and were given a wonderful demonstration of gift wrapping by Mrs N Collier. She wrapped parcels of many awkward shapes most attractively and finished them with pretty and varied bows. I wonder how many of us were able to do our presents up as well as this - I am sure some did very well and others tried hard to follow Mrs Collier's example!

The demonstration was followed by the Christmas tea provided by the committee, and then our President, Mrs McKean, read out seven resolutions and we individually put them in the order of importance as we wished them to go ahead in this is to pick out the three we want to be considered further.

On 18th January our New Year's Lunch will again be at The Chequers and will be followed by a presentation 'Les Misérables to the Lion King' by Mr Martyn Harrison.

Frances Spalding

## Bareham Overy Partnership

### RIBA Chartered Architects

*Turn ideas into reality .....*

- Residential
- Commercial
- Leisure
- Industrial
- Planning & Building Regulation Applications
- Project Management
- Space Planning
- Interior Design



**Tel: 01279 816040 Fax: 01279 814414**  
**1 Station Road, Stansted CM24 8BE**

## HIGH HOUSE

### Montessori Day Nursery

(opposite Stansted Airport Terminal)

*Accepts children from 3 months to 5 years*

Excellent Ofsted Report

Nursery & Baby sections, small class ratio with qualified staff

Approved for Government funding for children 3+

Flexible hours and days according to needs of child and parent

Full day care available 8 am to 6 pm

Open 51 weeks a year

For further information please ring 01279 870898

## MEADOW

### Montessori Day Nursery

Saffron Walden

*Accepts children from 2 to 5 years*

Traditional values of Montessori teaching with structured reading, language and number. Children accepted full or part time, flexible hours, excellent ratio. Excellent Ofsted Report.

Open 51 weeks a year

For further information please ring 01799 513858

## BABY MASSAGE HOMEOPATHY AROMATHERAPY FLOWER REMEDIES

The natural path to healing

For more information contact

**Jan Rickwood  
Lower Street Clinic**

36 Lower Street, Stansted CM24 8LP

07889 375200 or 01279 815907

**ART  
&  
CRAFTS** **NOW  
OPEN!**

**OUR FANTASTIC NEW CRAFT  
DEPARTMENT IS NOW OPEN!**

ACRYLIC PAINT, GOUACHE, SILK PAINTING,  
STENCILLING, OIL PAINT, GLASS PAINTING,  
SCRAPERFOIL, GOLD LEAF, BRUSHES, POSTER PAINTS,  
MOUNTING BOARD, MARQUETRY, ETC.

**NEW STOCK ARRIVING DAILY!**

WE NOW HAVE PARKING FOR OVER 30  
CARS PLUS AN ALL NEW OFFICE  
FURNITURE BUILDING, CALL IN AND SEE!

**Millway Stationery**

Chapel Hill, Stansted. Tel: 01279 812009



## ALDWYCH CONSTRUCTION

23/25 Lower Street, Stansted CM24 8LN

Building and Decorating Contractors

All needs provided throughout  
North West Essex,  
East Herts & South Cambs

FOR ESTIMATES

Tel 01279 816701

Mobile 07976 050802

Fax 01279 812656



**'PROPER WORK AT PROPER PRICES'  
BOTH PERIOD AND MODERN**

## ONWARD DRIVER TRAINING

*'Safe driving for life'*

Driving Standards Agency Approved Instructor and Assessor

- Learner Tuition: Manual & Automatic dual-controlled Fiat Puntos - friendly non-smoking environment with in-car laptop & video for Theory & Hazard Perception Training
- 'Pass Plus' Registered Instructor
- Advanced & Defensive Driver Training
- Company & Fleet Driver Training and Assessment (for compliance with HSE requirements)
- Motorway Tuition and incident management
- Refresher and Confidence-Building Courses (Parking, Manoeuvring, Economy & Winter driving)
- 4x4 and 6x6 Off-Road Tuition (including winching, self-recovery, commercial and leisure)
- Driver Instructor Training

**Philip Hastings Dip.DI, ADI**

19 Cawkell Close, Stansted CM24 8JF

Tel: 01279 815571 email: DrivingOnward@aol.com

## osteopathy

**Cranial, spinal, joint and muscle  
treatment including sports injuries.**

Effective results for back pain, neck pain,  
trapped nerve, headaches, migraine,  
sleeplessness and digestive problems.

Suitable for **adults, children and babies.**

Registered Osteopath

BSc.(Ost) D.O.

**Hazel Williams**

61 Blythwood Gardens, Stansted

01279 813371 or 07973 409675

osteopathy@hazel-williams.co.uk

## MORE OF STONEY COMMON

The focus on Stoney Common in the December issue has stimulated some responses. Barbara Jones tells us that she was able to rescue the cross from the Mission Room during its demolition and that it is now in her garden in Stoney Place where it serves as a memorial to her granddaughter.

Peter Brown, always a fund of local history, reminds me that the hut which since 1963 has served as the 1st Stansted Scout Headquarters in Water Lane was formerly situated on the Grippers land opposite West Road. It was erected by Major Cawkell as a community building for what was then a largely Rochfords Nursery population. It has become increasingly apparent that it was well-built from the best available materials for after a thorough survey the Scout Group only recently decided to refurbish it rather than construct a new building on the site. Near where the telephone box now stands was a less prestigious hut used by a cobbler. Peter recalls the diesel engine that powered the cable for the trucks which took the coal from the sidings (now built on) to the greenhouses and how the village lads spent Saturday mornings cleaning it. There was almost constant activity on the road as the descending trucks were disconnected and completed their return journey to the sidings by gravity. No gates - just a notice and a wary engineman.

Ruth Wickens, whose husband was a Rochfords employee, was the last shopkeeper and kept it going largely out of consideration to the locals long after she would normally have retired. The receipt (right), a fine example of regional pride, bears the name of Mr Reeve who preceded her and became a long-term shopkeeper on 'The Common'. There was at least one other shopkeeper between Mr Reeves and Ruth; can someone give a name or some anecdotes, please? Any other personal recollections would be welcomed to add to the history of this unusual community.

Derek Honour



**SUPPORT YOUR  
OWN COUNTRY!**  
Buy British whenever you can  
**A. J. HOLLAND'S  
National Mark  
Flour**

Made from Wheat grown and Manufactured  
in the Wheatfields of England.

*Mr R Harrington*  
*The Common*

BOUGHT OF **J. C. R. REEVE,**  
**CASH STORES,**

Tobacco, Cigarettes, Patent Medicines, General Provisions.

**STONEY COMMON, STANDED, ESSEX.**

Sept 14 <sup>th</sup>	To Goods	f			30
	Paid				
	With hauls				
	J. Reeve				
	14/9/37.				

**NATIONAL MARK** means that the flour is milled in England from wheat grown wholly in England, and also that it carries a guarantee of purity, is not only British, but 100% ENGLISH.



## RURAL YOUTH PROJECT

Ryppers is a club for young people aged 11-16 who live in rural areas in (roughly) the Saffron Walden, Newport and Stansted deaneries. It is run by the Assistant Warden Sarah Carroll at St Marks College, Audley End and aims to meet for a variety of fun activities and fellowship about once a month.

The programme for the New Year is:

- 7th January** Bowling and ice-skating
- 22nd January** Ryppers Worship (this will start at 4.00pm and will be a relaxed service followed by drinks and cake)
- 13th February 1** Ryppers Residential (more details to follow)
- 16th March** Club night 7.30pm-9.00pm (Pool, indoor bowls, table tennis, pool, play station and other activities)
- 10th-12th April** Trip away to Derbyshire youth hostelling (more details to follow)

In the Ryppers worship sessions we aim to have some lively modern worship and some relevant thoughts from the Bible, with special input from our youth volunteer staff.

Ryppers is all about giving young people from isolated areas the chance to meet up outside school, giving them fun and sometimes adventurous activities, all within the Christian ethos of St Marks College. If you would like information about Ryppers please feel free to contact Sarah Carroll, Assistant Warden at St Mark's College, on 01799 513021 or ryppersstmark@hotmail.com.

Sarah Carroll

Professional  
Self-Employed Barbers



5 Station Rd, Stansted  
Tel 01279 817788

**Opening Hours:**  
Mon, Tue & Fri 8 am - 6 pm  
Wed & Thu 8 am - 8 pm  
Sat 7 am - 4 pm

[www.the-mensroom.co.uk](http://www.the-mensroom.co.uk)



### Over 55 or Retired?

Then a warm welcome awaits  
at  
**Stansted Day Centre**

Home cooked or frozen lunches  
Snacks and social activities

Open Tuesday, Thursday  
& Friday 10 am to 4 pm

Crafton Green, top of Chapel Hill  
Tel. 01279 815091

## HEARING HELP UTTLESFORD

(Formerly CamTAD)

Free hearing help  
sessions at  
Stansted Day Centre  
10 am and noon on  
the last Tuesday  
of each month

For information ring  
HELPLINE 07704 553727  
(9 am - 4 pm)

or  
01799 522915  
or 01371 873310

Registered Charity No. 289280

## EDDIE HO



Fish & Chips  
BBQ Chicken  
Southern Fried Chicken  
Pukka Pies  
Beef Burgers

Station Road, Stansted  
**01279 817307**

## HELPLINE

**07704 553727**

If you have a **PROBLEM**  
or are in need of  
**ASSISTANCE**

Monday - Friday  
9.00 am - 4.00 pm

Stansted's voluntary community care service

## J R JOHNSTON C&G RFS

Qualified Tree Surgeon

Fully Insured



Pruning  
Dismantling  
Hedge Trimming

Trees/Shrubs supplied & planted  
Contract Maintenance

Tel 01920 821595



Ages 2½ - 5 years  
morning & afternoon

Own building in beautiful  
village school grounds

Excellent facilities  
& outdoor play areas

Well qualified staff

Outstanding OFSTED  
Report (January 2004)

Come & visit - you will be  
made very welcome

For further  
information tel

814037 or 0777 3730754



## KINGS FAMILY BUTCHERS



*NOW TAKING ORDERS FOR  
FREE RANGE:*

SUFFOLK PORK  
BLACK / BRONZE TURKEYS  
GEESE & DUCKS  
SUFFOLK PORK SAUSAGES  
(Homemade)

DRY ENGLISH CHICKENS

PRIME SCOTCH BEEF

*QUALITY:*  
ENGLISH & WELSH LAMB

16 LOWER STREET, STANSTED  
TEL 01279 812219

## GET THE MOST OUT OF LIFE

### Hypnotherapy

& other brief therapies

**One session  
smoking therapy &  
weight loss**

*also*

Confidence ~ Eating  
Stress & Anxiety  
Phobias  
IBS & Depression  
Study & Exams  
and much more ...

Please ring **GLYNIS CHEERS**  
**MA. BA. BSCB,**  
**Dip. Clinical Hypnotherapy**

01279 812165



# St Mary's CE Foundation Primary School



What an exciting end of term we have had at St Mary's. We had so many things to do during December that our feet barely touched the ground.

At the end of November the whole school took part in a two day art project on the theme of 'Our Village'. Each class took responsibility for a different aspect of the project and worked collaboratively to produce a painting or sculpture for display. The finished piece of art includes a six foot Stansted windmill and various flora and fauna that can be found in our village environment.

Continuing the environmental theme, four year 5 and 6 students took part in an ICT workshop at Stansted Mountfitchet High School on the topic of endangered species. They worked in partnership with pupils from other local schools to produce Power Point presentations on the theme.

At St Mary's children are encouraged to care for and help others so we were absolutely delighted to be involved in fund-raising for a children's cancer charity CLIC-Sargent. On Friday 9th December the whole school took part in the 'Big Sing' and broke the world record for the largest simultaneous sing. At 2.45pm exactly we joined Joss Stone, Lemar, Miss Dynamite and the African Children's choir via an Internet Link from the Albert Hall in a rendition of 'Lean on Me'. We sang along with a million other people from all over the UK in order to smash the previous record of 83,637 voices.

Less than a week later children in Key Stage One starred in an all-singing, all-dancing production of 'Countdown to Christmas'. This was performed on two consecutive afternoons in December for grandparents and for parents. The production was superb, from the costumes and scenery to the confident performance of the children. There were many proud parents and grandparents in the hall on the two afternoons! A big thank you to all the staff involved in this excellent production.

Our Christmas Fayre took place on Friday 16th December and was another extremely enjoyable event. Children had clearly been very busy in the run-up to the event, making wrapping paper, Christmas stars and a range of Christmas gifts for their parents to buy. Father Christmas made his annual visit to the school and judging by the queue for his grotto, was an extremely popular guest!!

On the last day of term parents again joined us as we celebrated the birth of Jesus at our annual Christmas Service at St John's Church. We finished the term with a delicious Christmas dinner from our school kitchen, served by the governors.

Vicki Brice, Parent Governor

## Tenth Anniversary Concert! [www.villagemusicclub.co.uk](http://www.villagemusicclub.co.uk)

January 2006 will see the 10th Anniversary of the Club's inauguration and we shall be making the occasion of international pianist **Bernard Roberts'** visit on the weekend of 28th and 29th January somewhat special, with a Masterclass on the Saturday and a Concert on the Sunday.

Some may recall that Bernard has been to the Club before and he has long been acknowledged as one of Britain's leading pianists. A particularly profound interpreter of Beethoven, his recording of 32 Piano Sonatas on CD over 15 years ago, for Nimbus Records, received the highest praise in Europe and America as well as in this country. Bernard has performed at many of the major British festivals over the years and his international travels have taken him to the Far East, Southern Africa, America and Europe. He has often appeared as a concert soloist at the 'Proms' with the leading British orchestras and conductors, and he has been well known to Radio 3 listeners for many years as a recitalist and chamber musician.

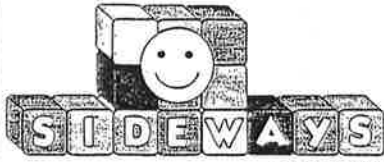
His programme for the Concert at 3.00pm on Sunday 29th January will include Mozart's Sonata in C major (K 330), Beethoven's Rondo in G major (Op 51 no 2) and Sonata in E flat (Les Adieux) and also music by Rachmaninoff and Schubert. Mulled wine will be served during the interval. Tickets for the concert, which takes place in St John's Church are £10, children £3, and children of members £1, available from Stansted Carpets, Chapel Hill, Nockolds Solicitors, Bishop's Stortford, Sonia Levy, 31 Chapel Hill, tel 815282 or at the door.

Bernard is also highly regarded as a teacher as well as a performer and has given many recitals with Masterclasses in Germany, France and Denmark, and in London he taught at the Royal College of Music for over 40 years. **On Saturday 28th January at 4.00pm in St John's, Bernard will be holding a Piano Masterclass, supported by Stansted Stort Valley Rotary**, for invited young piano students. To see the master at work putting pupils through their paces will be an unrivalled experience for them, as well as being an education for the audience. Admission to the Masterclass is £5, payable at the door.

Our fourth and final concert for this season will be at 7.30pm on Saturday 25th March 2006 and will feature The Coull String Quartet.

Alan Corbishley





## Pre-school nursery

- ☺ Excellent Ofsted Report
- ☺ qualified Friendly Staff
- ☺ Spacious hall with a quiet room for Rhymes & Stories
- ☺ Emphasis on learning through play

telephone 01279 813828



## Tim's Tiles & INTERIORS

Quality interior decoration, including tiles, wood flooring, Amtico & carpet.

Now in spacious Period Barn

Stockists of Farrow & Ball Paints

Pilgrim's Barn, Gypsy Lane  
BISHOP'S STORTFORD  
CM23 1HA  
Tel / fax 01279 813333

[www.tile-store.co.uk](http://www.tile-store.co.uk)

## J.D.W. GAS HEATING SPECIALIST

Boiler Servicing  
Fast response to breakdowns of Central Heating & all gas appliances

Carbon Monoxide Testing  
Boiler Replacements  
General Plumbing  
Cooker Installations

24 Hour Call Out  
CORGI Registered  
Ex. British Gas

Contact Julian  
25 Bentfield Causeway  
Tel 01279 816083  
or 07967 366585

## VICKERS SOLICITORS

Friendly & personal service  
Fixed fee Conveyancing  
Litigation

Free initial consultation

Advice & assistance at  
reasonable cost  
Prompt attention

Please contact Julian Vickers  
16 Lower Street,  
Stansted CM24 8LP  
Tel: 01279 817871  
Fax: 01279 817877

Email:  
[julian@vickerslaw.demon.co.uk](mailto:julian@vickerslaw.demon.co.uk)

## AUTOMOBILE ENGINEERS

# David Nunn's Garage



Bentfield Road Stansted  
TEL: 01279 812686

## Battery Distributors

SERVICE & REPAIRS POWER TOOLS  
ALSO BATTERY PACKS TO FIT  
MOST MODELS LEISURE MARINE  
GOLFING MOBILITY  
TEL. 01279 657040



Unit 13, The Links Business Centre,  
Raynham Rd  
Bishops Stortford, Herts CM23 5NX  
[www.zelta.co.uk](http://www.zelta.co.uk) email: [@zelta.co.uk](mailto:@zelta.co.uk)

## STANSTED CARPETS

42 CHAPEL HILL, STANSTED

### CARPETS & VINYL

CARPET TILES - SAFETY FLOORING  
DOMESTIC AND COMMERCIAL

### CURTAINS

AND FABRICS · RAILS AND POLES  
HAND MADE CURTAINS

FREE LOAN OF SAMPLES  
HUGE SELECTION  
FREE QUOTATIONS

### WALLPAPER

BORROW THE BOOK - CHOOSE AT HOME

01279  
**812019**

## Mark Robinson Handyman

All jobs considered  
'No Job too Small'



For information  
and a competitive quote  
please call Mark on

Home  
01279 813730  
Mobile  
07766 761084

Joinery, Gardening, Plumbing,  
Painting, Patios, Fencing, Guttering,  
Brickwork and Tiling

## FOSTER PLUMBING & HEATING



Reg no 110708

CORGI registered gas installer  
Replacement gas/oil boilers  
and heating upgrades  
Gas fire & surrounds

Boiler servicing

Landlord's gas safety  
inspections

Tel 01787 279146  
Mobile 07774 654378

## DAYS OF THE WEEK

### 8. SATURDAY

The Roman dies Saturni - the day of Saturn the God of Time

French - Samedi

German - Sonnabend (Sunday eve) or Samstag

Saturn, from whom we get our Saturday, was connected with seed corn and sowing and was identified with the Greek god Kronos. At his feast, Saturnalia, slaves were granted temporary liberty and presents were exchanged. The boisterous celebrations went on for several days, the details of which it is not appropriate to go into here!

The planet Saturn, sixth from the sun, named after this god, is known for its bright and beautiful rings. These can be seen with a small telescope other than when the planet tilts to such an angle from us that the thin rings are edge-on and do not show up. There is an old



Irish saying that it is unlucky to get married on a Saturday which is unfortunate as so many weddings take place then.

On Holy Saturday at Bacup near Rochdale, Lancs, a form of Morris dancing, the 'Nutter' clog dance, takes place. The men blacken their faces and wear wooden discs or 'nuts' on their knees, palms and waists with which they tap out rhythms. This probably reflects the local mining connections when protection was worn when crawling through the mines. Holy Saturday is often incorrectly referred to as Easter Saturday which is the following Saturday after Easter.

It is also known as Easter Even and commemorates the resting of Christ's body in the tomb. In early times there were no special services on this day.



The Jewish Sabbath, or Shabbat, day of rest, is on Saturday, beginning just before sunset on Friday.

A special Rushbearing ceremony takes place on the first Saturday in July at Brough, Cumbria. This commemorates the day when old rushes were cleared from the floor and new put down. No doubt other places continue with similar traditions. Saturdays in September are busy in Lichfield. The Sherriff's Ride is on the Saturday nearest the 8th. This dates from Queen Mary's Charter of 1553 when Lichfield was separated from Staffordshire and allowed to have its own Sheriff. The Ride is around the boundary of 16 miles. On the Saturday following the 18th, Dr Johnson's birthday celebration takes place with a procession to Johnson's statue and the laying of a laurel wreath.

We obviously take the name of this day directly from the Latin but in Swedish the word for Saturday is Lordag, from an ancient Swedish word meaning 'bath'. It is said that the Vikings only took one bath a week (if that) and it was on Saturday so they called it 'bath day'.



Peggy Honour



Our first term at Rainbow was very busy indeed. We welcomed many new pupils who have settled in well. We are pleased to report that because we are now so oversubscribed, from January we will be offering an extra two morning sessions per week for the two and half year olds. These extra sessions will take place in the Quaker Hall.

After reading the story of 'The Little Red Hen' the older children enjoyed both a visit to the windmill and to the bakery at Sainsbury's to find out how bread is made. The trip on the bus to Sainsbury's proved just as exciting for many of them as the bakery itself! Many thanks to Anthony and Rosemary Minshull who showed us around the windmill.

Nearer to Christmas the children were busy making calendars, cards and delicious Christmas cakes as well as preparing for their Christmas performances. Parents were treated to a wonderful Nativity by the older pupils and a rendition of songs sung beautifully by the younger ones. Father Christmas also made a guest appearance to reward the children for all their hard work this term. After all that there was just about time to squeeze in food and fun filled Christmas parties before the end of term! Happy New Year from us all at Rainbow.

If you are interested in a place at the pre-school please contact Gill Pursglove on 814701 for further information.

Kate Maginn (Rainbow Committee)



## Huw Johnson Club

On 9th December our Christmas Concert went with a swing and I hope our audience enjoyed the show as much as our members did. Thank you to everyone who supported us and for clapping, cheering and boo-ing in all the right places. It means so much to our members when they have a good audience.

A big thank you to all our members who did everything so well. I'm sure our dancers would do just as well as the Strictly Come Dancing celebrities given the chance to appear on TV. Thank you also to Sarah for once again doing so well on the piano. We hope to see you all again next year.

Now that you've witnessed our show and seen the pleasure our members get from the Club activities, please, please volunteer to drive for us.

Marion Johnson

## SENSORY INTEGRATION

An Evidence Based Therapy Approach that Truly Helps Children with Difficulties

Sensory Integration Therapy is a treatment approach that was developed by Dr Jean Ayres. She was a remarkable educational psychologist and occupational therapist. There are years of research to prove how this treatment could better the lives of so many children. Children who have dyspraxia or co-ordination difficulties, autistic spectrum disorders, tactile defensiveness (inability to cope with touch stimulation), blindness or partially sighted, deafness or hard of hearing, just to name a few conditions, benefit from sensory integration intervention. (This list is not exhaustive.)

By assessing a child with a standardised assessment tool, the Sensory Integration Therapist gains an insight into the child's current functional level, the severity of difficulty as well as how good or how poor he/she fared in relation to other children of the same age. The assessment allows the therapist to build a profile on the various sensory systems (ie eyes, ears, nose, skin/touch, movement sensors, ability to know where you are in space) that have difficulties. The results of the test will report on visual perception, design copying, right-left discrimination, balance, dominance, motor control, motor planning ability or praxis, crossing the mid-line of the body and much more. The therapist can then clearly explain to the parents why and how these underlying difficulties in the various sensory systems impact on the child's behaviour, emotional stability, physical abilities and availability for learning.

For more information on this wonderful and useful way of helping a child in need please see the Wynita Davies advertisement.

**NEWWIN-E LTD**  
**Private Occupational Therapy Services**  
**newwin-e@ntlworld.com**  
**LOOKING FOR A PRIVATE OCCUPATIONAL THERAPIST?**

We can assess your child for the following:

	Current Functional Level	
	Dyspraxia ADHD	
	Visual Perception Problems	
	Sensory Integration Difficulties	

Are you concerned about any of the following issues?

	Lack of concentration	
	Difficulty to sit still in class	
	Problems with reading or writing	
	Co-ordination difficulties	

**LOOK NO FURTHER**  
**CONTACT WYNITA DAVIES ON 07931 341365**  
**TO SCHEDULE YOUR ASSESSMENT**

## STANSTED LUNCH CLUB

30th November 2005

On 30th November, after a few moments of silence in memory of Linda Bonich, a much loved and enthusiastic member of the Club who had died since our previous lunch, 50 of us sat down to enjoy an excellent lunch in the comfortable and relaxing ambiance of the Conference Centre at The Stansted Centre. Heather Andrews, Managing Director of Weston (Business Centres), part of Bob Weston's Weston Group plc, hosted the Lunch and opened proceedings

### Young People Of The Year (YOPEY) 2005

Tony Gearing, who spoke to us of YOPEY earlier this year, brought his YOPEY Ceremony to Bishop's Stortford on 29th November together with The Rotary Club of Bishop's Stortford, the sponsors. As a counterbalance to the 'bad press' suffered by the young, YOPEY's mission is to reveal young unsung heroes, recognise them publicly, and to reward the very best.

For this very worthwhile venture, Tony is looking for sponsors. Contact Tony on (01763) 289453. Find out more on [www.youngpeopleoftheyear.org](http://www.youngpeopleoftheyear.org).

### WEEE Directive

During the course of 2006, the UK will adopt the Brussels inspired WEEE directive. The purpose of this is to stop electrical and electronic equipment going into landfill. Instead, every effort should be made to reuse items, reduce to component level, or finally to reclaim materials.

PCRC has been set up in Bishop's Stortford by Bob Lee of Business Kinetics, and Gary Moore of Genmar, to take in old, surplus or redundant IT equipment. That which is serviceable is cleaned and found a new home, perhaps in the UK or overseas. Anything else is disposed of in accordance with the WEEE requirements.

More details on [www.pcrc.org.uk](http://www.pcrc.org.uk), or call 01279 655081.

### Next Lunch

Forget not that the Lunch Club meets again on 25th January 2006 under the sponsorship of City & Country Residential. Details will be circulated at the end of the month but in the meantime be sure to put it in your diary!

Contact (as ever): Alastair Richardson (07850) 295109

...and finally

May 2006 be a year of health, happiness and prosperity for each and everyone.

Alastair Richardson



## Uttlesford District Council

I am writing this on the day BAA announced its preferred option for a second airport runway. Nothing much has changed from the original government plan. BAA's first choice is for a runway 2.3 km east of the present runway towards Little Easton. They have not ruled out a runway to the north-west that would blot out part of Tye Green and Gaunt's End. All options blot out most of Burton End.

All options are based on the unsustainable proposition that aircraft carbon emissions from Stansted should be allowed to escalate to equal the carbon emission of every home and homeowners' car in the six counties of the East of England. In early December I attended a three-day conference on climate change. Councillors were called on to lead the increasingly desperate debate about how to reduce the energy we all use and the effect that is having on climate change. There is one simple target here in Stansted. Stop that second runway and BAA's madcap plans!

The council recently commissioned an opinion survey of around 1,000 residents about growth beyond 25 million passengers a year on the existing runway. This shows that twice as many people oppose further expansion as support it. **The survey will be on the agenda of Uttlesford's first Area Panel at Mountfitchet High School on Tuesday 31st January 2006. Watch out or ring me for further details.**

An imminent proposal from the District Council is to change the way rubbish is collected from our homes starting next summer. The main change is to collect kitchen waste separately so that it can be processed and not buried in the ground, where it currently produces nasty gases like methane. Instead of green or black boxes for recycling material and bins or bags for the remainder collected each week, we will be given three wheelie bins. There will be exceptions for people who have real difficulties storing and moving bins to the kerbside for collection.

One wheelie bin for kitchen waste will be collected each week. The second bin will be used for all recycling material (what now goes in the plastic boxes) and will be collected every two weeks. On the alternate week all other waste material will be collected in the third bin, which will contain nothing that can create smells. This is the only rubbish that will be buried in the ground at landfill sites and will be far less than it is today. This will give a major boost to Uttlesford's recycling performance and will avoid the council tax having to cover fines for sending too much and the wrong type of material to landfill tips. The new scheme will cost over £400,000 extra each year but will save up to £800,000 in fines. I will provide more information in coming months.

Finally, a bit of encouraging New Year news. It looks as though we will be getting a new post office in the spring of 2007. Keep your fingers crossed!

Councillor Alan Dean  
Tel: 01279 813 579  
Email: [cllrdean@uttlesford.gov.uk](mailto:cllrdean@uttlesford.gov.uk)

## Policing matters

I attended recently a meeting of the Braintree and Uttlesford Police and Community Consultative Group where the Divisional Commander, Chief Supt Peter Coltman outlined the changes facing Essex Police. Currently Essex is organised into nine divisions of which Stansted is in the Braintree and Uttlesford division. Reorganisation will create five larger divisions. Our new division will include the Uttlesford, Braintree, Chelmsford and Maldon council areas. It is claimed this will result in a £3 million efficiency saving. This will be used to recruit more front line officers. Although this is good news, it does mean that the divisional commander will be looking after a larger area and will be less readily accessible.

Essex Police is also facing Home Office proposals for merging them with neighbouring police forces. This is part of a worrying trend as seen with Primary Care Trusts that Government has decided big is beautiful. For Stansted residents key decision makers will become less accessible and less responsive to their needs. Uttlesford District Council is supporting Essex Police Authority in their bid to resist merger.

## Area Panels

These have been created under the new Constitution and are an attempt to bring the Council nearer to its residents and communities, in a way that has not so far been achieved. Stansted's four district councillors attended a meeting of the South West area panel to discuss how it will operate. Public participation will be an important element of the panel. We want to hear your concerns and hopes for the future. It has been decided that meetings will be held at the Mountfitchet School. At our first meeting in January we will be discussing airport expansion and also the new ONE railway timetable. The reduced train service comes into effect just before the fare rise on 2nd January. My name has been put forward to the Council to serve as the Panel's first Chairman.

Councillor Geoffrey Sell  
Tel: 01279 815925  
Email: [cllrsell@uttlesford.gov.uk](mailto:cllrsell@uttlesford.gov.uk)



## MOUNTFITCHET GARDEN CLUB

The Garden Club held its Christmas Party on Wednesday 7th December enjoying wine and Christmas fare whilst competing in quizzes on gardening, entertainment and general knowledge. The winner was the team consisting of Pam and Ian Seavers, David Harman and Marylyn Harris.

The end of another gardening year. We shall all be together again in February on the 1st listening to Andrew Tokely of Thompson and Morgan talking on 'Something old, something new'. Visitors very welcome.

Sally Stockman



Registered charity number 10049801

## St John's Road Stansted

For children aged  
2½ to rising 5

For details please contact  
**Ann Conroy on**  
**07966 506997** or  
**Gill Pursglove on**  
**01279 814701**

## Selina Rankin Garden Design



Offering a comprehensive  
garden design service  
to meet all your needs

Friendly, professional service.

No job too big or small

One off consultations through  
to complete garden re-designs

For further information please contact:

Selina Rankin  
Chimneys, 44 Lower Street, Stansted  
Tel: 01279 813388  
Email: [info@srgardendesign.co.uk](mailto:info@srgardendesign.co.uk)  
Web: [www.srgardendesign.co.uk](http://www.srgardendesign.co.uk)



## Alzheimer's Society

Dementia care and research

### Uttlesford Branch

Our Outreach Workers are  
happy to offer help, advice  
and support to people with  
dementia and their carers.

Home visits possible.

Please contact us  
on

**01371 872519**

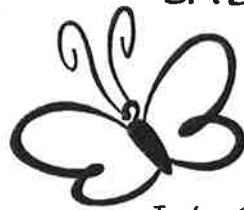
or email:

[alzheimers@uttlesford.freeserve.co.uk](mailto:alzheimers@uttlesford.freeserve.co.uk)

Registered Charity No 296645  
Company Reg No 2115499

Stansted's

## PAINTING LADIES



Interior  
Decoration & Design

Free initial consultation  
Decorating & Colour Advice  
Bespoke Soft Furnishings

Gail 07818 093992  
Michaela 07723 087333

## Shadowfax

IT solutions for your business

- Consulting and Support
- Custom-built PCs and Servers
- Network Installations
- Broadband Internet
- Antivirus software
- Advice from qualified staff

**Microsoft**  
CERTIFIED  
Partner

2a Bentfield Road  
Stansted CM24 8HN  
Tel: 01279 813076  
E-mail: [info@sfax.co.uk](mailto:info@sfax.co.uk)

## NLP Solutions - for today's problems!

Stress, Anxiety, Depression,  
Smoking, Weight Loss,  
Anger, Allergies, Phobias,  
Unhelpful mental blocks,  
Bad memories or habits

Why let them run your future?

Resolve them with Brief Therapy

Call today: 01279 817976  
or email [Link@NLPsolutions.com](mailto:Link@NLPsolutions.com)

### Sian Lloyd MBA

Certified NLP Trainer &  
Master Practitioner  
Registered Timeline © Practitioner  
Member of ANLP & NLPtCA  
Neuro-Linguistic Counselling,  
Therapy, Coaching and Training



9 Hole Golf Course  
Pay and Play  
Health & Fitness Suite  
Memberships Available  
Driving Range  
Open 7 Days a week

**01279 812865**

## Computer Users! Mac & PC Repairs

software & hardware upgrades  
computer repairs

call:

**Alan Horsley**

**Tel: 01279 835475**

**Mobile: 07952 970324**

No call out fee ~ Viruses eradicated  
Low cost antivirus ~ No job too small

## The Alexander Technique

Helps with back & neck pain  
and many stress related disorders

Private sessions

'Now available at Fancy Fingers'  
Silver Street, Stansted  
with Pippa Bondy MSTAT

For details please contact Pippa on  
01766 590685 or 07814 959613  
[info@ancienthealingways.co.uk](mailto:info@ancienthealingways.co.uk)

patrick  
howard  
design  
associates



BRAEMAR HOUSE, WATER LANE  
STANSTED CM24 8BJ

Tel: 01279 817342 Fax: 01279 647086

email: [info@phdassociates.co.uk](mailto:info@phdassociates.co.uk)

## touch™

mobile beauty treatments

Experienced and fully  
qualified Beauty  
Therapist.  
Full range of Beauty  
treatments available.

Wedding, holiday packages.

Call Gemma on 07770766420



# Stansted Evening Women's Institute

The AGM in November resulted in the return to office of our President Marion Pretty for the sixth year; and following the resignation of two committee members, Peggy Honour and Bridget Gott have joined those staying on. Peggy is a past President of the Institute and it is good to have her back on the committee after a long time. Bridget is fairly new to the WI so it is nice to think that she has joined us in the running of it. I was away for the AGM - welcoming our newest member of the family - a granddaughter - in Australia. Chris Morris was away too exploring the delights of India. This year two other members have visited New Zealand and one Japan, as well as several members taking cruises, so we could probably do a travel programme of our own.

In November members enjoyed a shopping trip to Peterborough, where they could visit the Cathedral as well as the shops. A wreath was laid by Marion Pretty on behalf of members on the War Memorial at the Remembrance Day Parade. Members were very sad to hear of the sudden death of our National Chairman, Barbara Gill aged only 63. She has been such an inspirational leader of our movement in the couple of years that she has been Chairman.

The December meeting was very well attended to hear Elizabeth Baker from The Chelmsford Ballet Company give us a talk and show us some of the wonderful costumes she has made in her capacity as wardrobe mistress of the company for many years. The company was founded in 1949 by Joan Weston and auditions are made once a year from anyone over 10 years of age. The standard is high but having once been accepted you are not required to audition again. Elizabeth has been a dancer with them too for over 30 years and was joined by her daughter when she was old enough. Her daughter now runs a ballet school in New York. The costumes we were shown were beautifully made so that they last for many productions and can sometimes be altered for different ballets and different sized dancers! They have staged many ballets including Coppelia, Nutcracker, La Fille Mal Gardee, Sleeping Beauty and Beatrix Potter - she brought along some of the masks used for the latter - which must be extremely uncomfortable to dance in. She has recently been making tutus for the Royal Ballet - a very talented lady. We are hoping that we can go to a performance this coming May.

Members were sad to learn of the death of one of our long time members Greta Woor. Greta has lived in the village all her married life and has been a very loyal member of our Institute; we shall miss her.

We were asked to put in order of preference the Resolutions that will be discussed next year at the AGM. There were seven to choose from, but members had quite strong convictions on several - our main one being the health risks concerning hydrogenated fats in the manufacture of food, so we shall see if that comes to the fore over the rest of the country.

Next year's programme is now ready and we have some interesting speakers booked including 'The History of Fingerprints' and 'Fun at the Flicks'. If you haven't tried us before come along any second Thursday of the month at 7.45pm in St John's Hall - we welcome new members all year but January is the start of ours.

Judy Colliver



## STANSTED FUN RUN

11.00am Sunday 2nd July 2006

We recently held our AGM, where we adopted the accounts from the previous Run, and re-elected the following: Co-ordinator: Marion Dyer, Treasurer: Alan Wheeler, Secretary: Brian Quinn. At the end of the meeting we paid tribute to Margaret Whitelaw, who was a hard-working member of our committee for a number of years. We will miss her very much. However, we are delighted to welcome Isobel Rawlinson to join our committee - it is especially good to have some 'young blood'!

We will soon be holding our first planning meeting, during which we will decide which charities to support. Although there is no set pattern, we have in the past tried to include a local charity, so if you have any suggestions, please let me know. We do not normally support a charity more than once, unless we feel that there is a particular need.

Marion Dyer Tel: 814059  
Email: [info@stansted10k.org.uk](mailto:info@stansted10k.org.uk)



### STANSTED FUN RUN PRINTER CARTRIDGE

STANSTED *Yes - we are still collecting!!*

A big **THANK YOU** to all those who have donated cartridges. Please keep them coming - 20% of the money raised will go to the Link, the remainder towards the Fun Run administrative expenses. We can take both laser and deskjet/inkjet, but **unfortunately we cannot accept Epson cartridges, or own brand, such as Viking, or cartridges which have already been recycled.**

Please telephone Marion Dyer on 814059 or email [info@stansted10k.org.uk](mailto:info@stansted10k.org.uk) to arrange collection, or leave in the porch of 7 Blythwood Gardens.



**LOWER STREET CLINIC**  
36 Lower Street, Stansted

**REGISTERED OSTEOPATHS**

Jacolin Sheaf DO & Associates

Specialists in treatment of spinal, joint & muscle pain,  
headaches, trapped nerves & sports injuries

*Treatment suitable for all ages, including children*

Tel: 01279 815907

**STATE REGISTERED CHIROPODIST**

Richard Handford BSc, SRCh, MChs

Specialising in routine chiropody, sports injuries,  
ultrasound, biomechanics, orthotics,  
nail surgery & verrucae

Tel: 01279 647337

**Do-It-4U**

**General Handyman**

Home & Garden Repair, Care & Maintenance

- ◆ Plumbing, Electrical & Carpentry Services
- ◆ Drain Blockages Cleared
- ◆ Gutters Cleaned, Repaired or Replaced
- ◆ Fences Erected & Repaired
- ◆ Gardens Tidied & Maintained
- ◆ Hedges & Topiary Trimmed & Re-shaped

Telephone / Fax 01279 814411

Mobile 07774 877320

**D BONNEY & SONS (Manuden)**

MOT Testing ~ Diesel & Catalyst

Selection of New & Used Cars

Accident Recovery Work

Welding & Chassis Repairs

Borg & Beck Clutch Point Centre

Calor Gas Stockist

**We help YOU the motorist by**

- cheaper labour rate
- guaranteed workmanship
- free collection & delivery in local area

**Familiar with most makes of vehicles  
including four wheel drives**

Please ring Malc or Neil on 01279 813315 or 815946



**THE GRAHAM SCHOOL  
OF DANCE**

Highest standard **dance classes** are held at  
the **QUAKER HALL, STANSTED** in **BALLET, TAP**  
and **MODERN** dance for children from 3 yrs.

Classes also held in Bishop's Stortford  
(including for adults) & at Takeley.

**Our pupils ...**

\*keep fit & have fun\*

\*gain excellent exam results\*

\*win places with national dance companies  
such as the National Youth Ballet\*

\*dance in professional pantomimes\*

\*successfully audition for full time vocational  
dance school places such as the Royal Ballet School\*

**FOR FURTHER DETAILS & A FREE PROSPECTUS**

Tel: 654423 email: enquiries@grahamdance.co.uk

**VALLEY CARPETS**

The Carpet Specialist for  
Quality Carpets and Fitting for all  
Domestic & Contract Floorcoverings

*For an appointment please contact:*

Stuart & Sue Timms

25 Cambridge Rd, Stansted

Tel: 01279 817757

[www.valley-carpets.co.uk](http://www.valley-carpets.co.uk)

[info@valley-carpets.co.uk](mailto:info@valley-carpets.co.uk)



**Samantha Jane's Beauty Studio**  
*Specialising in Waxing & Beauty Treatments*

*- established 1985 -*

*Stockists of St Tropez Bronzing Mist*

*- £28 for 270 ml*

*Australian Bodycare - Solar Nail Oil*

*Gift Vouchers for all occasions*

*4 Late Nights by Appointment*

*Tel: Jane Charo on 654219 or 0793 276 9677*

*3 Bridge Street (1st Floor), Bishop's Stortford  
above Lednor Estate Agent opposite Tobacconist*

*10% off next appointment  
& 50p parking refund*



Essex County Council

## ADULT COMMUNITY LEARNING (Peter Kirk)

The Council has recently carried out a major review of its Adult Community Learning provision, and a number of changes have taken place. There were originally nine Adult Community Colleges spread across the whole of Essex, with each college, although funded centrally by the County Council, operating as a separate unit. The County Council now see the provision as a 'central service' delivered through five area colleges. Thus the North & West Essex Adult Community College (of which the Peter Kirk Centre was a part), has merged with Mid Essex Adult Community College, Brentwood, to become Adult Community Learning West Essex Area. Although the new name has already been adopted, our current prospectus will stay in force until after Easter, but any of you who enrol on our courses or contact the college, will notice that we now use the name 'Adult Community Learning'.

### NEW COURSES for 2006

**Indian Head Massage** Stansted Fri 9.30am 6 hrs x 5 wks starts 13<sup>th</sup> January

**Alexander Technique** Thaxted Sat 10am 3 hrs x 1 wk only 11<sup>th</sup> March

**Flower Arranging Improvers** Saffron Walden Tue 7.30pm 2 hrs x 10 wks starts 10<sup>th</sup> January

**Flowers, Modern Arrangements** Saffron Walden Wed 10am 2 hrs x 5 wks starts 11<sup>th</sup> January

**Flowers for Mothers Day** Thaxted Sat 10am 5 hrs x 1 wk only 4<sup>th</sup> February

**Keep Moving** gentle, mostly seated, 1 hour exercise classes for older learners or those with restricted movement are being held in Saffron Walden:

Custerson Court Wed 10am; Farmadine House Thur 10am; Almshouses Thur 11.30am. *Join now!*

### LANGUAGES FOR ADULTS AT NEWPORT FREE GRAMMAR SCHOOL

#### Taster Next Steps

**FRENCH, ITALIAN, SPANISH** Mon 7.30pm 1½ hrs x 10 wks starts 9<sup>th</sup> January

**FRENCH FOR IMPROVERS 2** Wed 7.30pm 1½ hrs x 10 wks starts 11<sup>th</sup> January

**JAPANESE FOR CONTINUERS 2** Wed 7.30pm 1½ hrs x 10 wks starts 11<sup>th</sup> January

**SPANISH FOR IMPROVERS 2** Thu 7.30pm 1½ hrs x 10 wks starts 12<sup>th</sup> January

### OTHER LANGUAGE COURSES

#### Clarance House, Thaxted

**PROPERTY LANGUAGE COURSE** (if you are considering buying or own a property abroad)

**FRENCH** 10am 5 hrs x 1 wk only 28<sup>th</sup> January **SPANISH** 10am 5 hrs x 1 wk only 28<sup>th</sup> January

#### Peter Kirk, Stansted

**SPANISH TASTER NEXT STEPS** Wed 7.30pm 2 hrs x 10 wks starts 11<sup>th</sup> January

#### United Reformed Church, Dunmow

**FRENCH CIRCLE** Tue 9.30am 2 hrs x 20 wks starts 10<sup>th</sup> January

**ENGLISH AS A FOREIGN LANGUAGE** Thaxted and Epping starts January 2006

For full details and enrolment tel 01279 427711 or 813319

**VACANCY** Cleaner/Caretaker, Stansted, please contact Ann Fitten on 01279 818036



## CARERS UK

Uttlesford District Branch

### "Caring about the Carer"

Carers are the biggest provider of health and social care in the UK. We offer help, support and advice. If you would like to know more

about us, call us now on:

**01371 875810**

Uttlesford Carers

46 High Street, Dunmow CM6 1AN

Registered Charity No. 246329

## Ray Morton

PAINTER & DECORATOR  
GENERAL HANDYMAN

**No Job Too Small!  
Free Estimates**

Tel 01279 812792

8 Mill Close, Elsenham

## Gina's Business Services

Office support for the smaller business

Bookkeeping, IT Tuition  
Transcription :-  
Tape (Philips) or Digital  
Special projects or  
Regular contracts

Telephone: 01279 812105

Mobile: 07703 509606

www.ginab.co.uk

## The Mower Shop

ELSENHAM

Mowers

Strimmers

Chain Saws

Garden Tractors

Tools & Accessories

Fieldings engineers

FULL REPAIR SERVICE

Tel 01279 813381

All major credit & debit cards now accepted

## STANSTED ALL-STEEL

Custom Manufacture

Security Grills  
Railings  
Gates etc.



Residential  
&  
Commercial

All Styles

All Sizes

Tel: 01279 817801 Fax: 01279 815704 Mobile: 07785 772341

Corner Buildings, Parsonage Estate, Stansted, CM24 8TY

www.stanstedallsteel.co.uk

## Indian Cuisine at its very best

Quality is the Result of Care

Fine Indian Cuisine and  
Traditional Fish & Chips

Take Away and Delivery Service

## STAR OF INDIA

Opening times: 12 noon to 2pm & 5pm to 10pm  
(except Sundays and Bank Holidays)

Tel 0800 007 6768 or 01279 810810  
or order on line at

www.starofindia.co.uk

3 Ambrose Corner, Robin Hood Rd, Elsenham

20% OFF

SPECIAL OFFER

**20% OFF orders over £15**

Monday - Saturday

on production of this voucher (collection only)



## S. PERRY CHAPEL END NURSERY



HUGE RANGE OF SHRUBS AND TREES  
INCLUDING MANY UNUSUAL VARIETIES

PLANTS AND BULBS FOR ALL SEASONS  
TUB & BASKET PLANTS PLANTED HANGING BASKETS  
HERBS VEGETABLE PLANTS FRUIT BUSHES  
ROSES HEDGING

GODWIN'S  
MULTIPURPOSE COMPOST  
75 LITRE BAG  
£3.65 EACH  
3 FOR £9

LEVINGTON MULTIPURPOSE  
75 LITRE + 33% FREE  
= 100 LITRE BAG  
£4.95

WE ARE  
HERE



EXCELLENT  
PRICES  
IT PAYS  
TO VISIT  
US FIRST

SUTTONS SEEDS  
5 PACKS OR MORE  
SAVE 10p PER PACK

CONIFERS  
BEDDING  
ALPINES  
HERBACEOUS  
COMPOST  
STONE  
PAVING

GRITS & GRAVEL  
SUNDRIES  
WILD BIRD FOOD  
XMAS TREES

OPEN: 9 am TO 6 pm EVERY DAY  
MOLEHILL GREEN ROAD  
BROXTED DUNMOW ESSEX  
01279 850771

# CORBETT ELECTRICAL

Electrical Contractor

Rewires ~ Extra Sockets & Lights  
Inspection & Testing ~ Repairs

31 Rainsford Road, Stansted Tel: 01279 816577

Relax and Enjoy

a weekend break  
or holiday with  
family & friends  
or just for two  
in a superb  
location



Let's Go To France  
[www.selectgites.com](http://www.selectgites.com)  
Alison Barr  
01799 530136

## Fancy Fingers

Beauty Treatments

Stansted Holistic Centre

Facials

Reflexology

Waxing

Counselling

Manicure & Pedicure

Hypnotherapy

Eyelash Tint/Perm

Herbal Medicine

Slimming ... & much more

Alexander Technique

Healthcare Commission certified: Permanent Hair Removal Centre

52a Silver Street, Stansted

Open Mon-Sat plus one evening

[www.fancyfingers.co.uk](http://www.fancyfingers.co.uk)

Tel 01279 647646

Always Happy to Help .....Pop In & See Us

## INTER COUNTY

The area's leading Independent Estate Agents

Tel 01279 814400

8 Cambridge Road, Stansted CM24 8BZ

also at Bishop's Stortford, Saffron Walden,  
Great Dunmow and Braintree

[www.intercounty.co.uk](http://www.intercounty.co.uk)

## Flowers for Every Occasion

from

**Diane & David Newland**

Weddings, Anniversaries,  
Floral Tributes or just a bunch  
in fresh or silk flowers

Fresh Flowers Always Available,  
No Order Too LARGE or SMALL



(Business Centres) Ltd Business Partner of the Year 2005

Call at "Cedarwood", Station Road, Elsenham or Tel: 01279 812110

# D. C. POULTON & SONS

Funeral Directors

Day and Night  
Personal Service



2 Chapel Hill 01279  
Stansted CM24 8AG 813219

Pre-payment Plans Available

Also at CLARKS LANE 01992 572609  
EPPING CM16 4NJ



POTHECARY & BARRATT  
SOLICITORS & NOTARY PUBLIC

Providing Legal Services for  
People & Businesses

For Professional Advice You Can Trust

Call Us

01279 506421

email: [mail@pothecary.co.uk](mailto:mail@pothecary.co.uk)  
or visit

[www.pothecary.co.uk](http://www.pothecary.co.uk)

White Horse Court, North Street  
Bishop's Stortford, Hertfordshire CM23 2LD

Clients' parking and Disabled Access

Also in the City of London

Wills, Probate & Trusts - Commercial & Residential Conveyancing  
Charities and Ecclesiastical Law - Corporate & Commercial Matters  
Litigation & Matrimonial - Landlord & Tenant - Notarial Services

Members of the Lawyers Christian Fellowship



35 Gilbey Crescent  
Stansted Essex  
CM24 8DT

Tel/Fax: 01279 816491  
Mobile: 07956 873230  
[www.roofer-essex.com](http://www.roofer-essex.com)

## A & M COLLINS ROOFING

Guaranteed Workmanship



- SLATING • TILING • LEADWORK •
- ZINCWORK • GUTTERING • FLAT ROOFS •
- REPAIRS • UPVC FACIAS & GUTTERS •





Exclusive Indian Cuisine

**FREE Home Delivery**

Take-away available  
10% discount  
on orders over £10  
on collection

8 Chapel Hill  
Stansted

Essex CM24 8AG

 **01279 815688**  
**01279 812774**

## Daniel Robinson & Sons

Independent Family Funeral Directors  
& Monumental Masons

A personal caring service from a family business  
day or night

Our trained staff will be pleased to give free confidential  
advice on any matter

79/81 South Street  
Bishop's Stortford  
01279 655477

3 Bullfields  
Sawbridgeworth  
01279 722476

146 High Street  
Epping  
Tel 01992 560890

Wych Elm  
Harlow  
01279 426990



Haslers Lane  
Great Dunmow  
Tel 01371 874518



24 hour family careline \* Golden Charter Pre-Payment Plans

# SCUBA DIVE

with

# 2DIVE4

## SCUBA DIVING CENTER

### 10 Chapel Hill, Stansted

### 08700 502254

### www.2dive4.co.uk

**ONE ON ONE SUPERVISION BEGINNER COURSES TRY DIVES**  
**FULLY STOCKED SHOP AIR FILLS DIVE TRIPS SERVICING**

# sensational!

But who can I trust to install it?

Buy your bathroom from an IBSA  
showroom and you'll receive :  
Free six year warranty on installation  
Free deposit protection  
Fabulous choice of select products  
Professional advice  
Expert installers



Bubbles Bathrooms Ltd  
27 - 29 High Street

Saffron Walden

Essex CB10 1AT

T: 01799 522488

F: 01799 522477



BATHROOMS • TILES • ACCESSORIES  
**BUBBLES**

www.bubbles-bathrooms.co.uk info@bubbles-bathrooms.co.uk



**BROADCASTLE  
MOTOR CONTRACTS  
LIMITED**

Cost effective Contract Hire  
on new and used cars.  
To discuss your requirements  
or obtain a quotation please  
call Julian Wood on

01279 813608

or visit [www.anewcar.co.uk](http://www.anewcar.co.uk)  
for a complete online  
quotation

10 Cambridge Rd, Stansted CM24 8BZ

Concord Motor Contracts is part  
of the banking and  
financial group Broadcastle plc



## SWORDERS

### FINE ART AUCTIONEERS

**G E Sworder & Sons**  
**14 Cambridge Road**  
**Stansted CM24 8BZ**

**Tel 01279 817778**

**Email:**  
**auctions@sworder.co.uk**

**www.sworder.co.uk**



## MullucksWells

**FOR A  
PROFESSIONAL APPROACH  
AND EXPERT ADVICE  
ON ALL YOUR  
PROPERTY MATTERS**

Country Properties  
Town Houses  
Residential Lettings  
Commercial Sales, Management  
and Letting  
Surveys and Valuations

6 GREENS BUILDINGS  
CAMBRIDGE ROAD  
STANSTED MOUNTFITCHET  
**TEL: 01279 816816**

web: [www.mullucks.co.uk](http://www.mullucks.co.uk)  
email: [stansted@mullucks.co.uk](mailto:stansted@mullucks.co.uk)